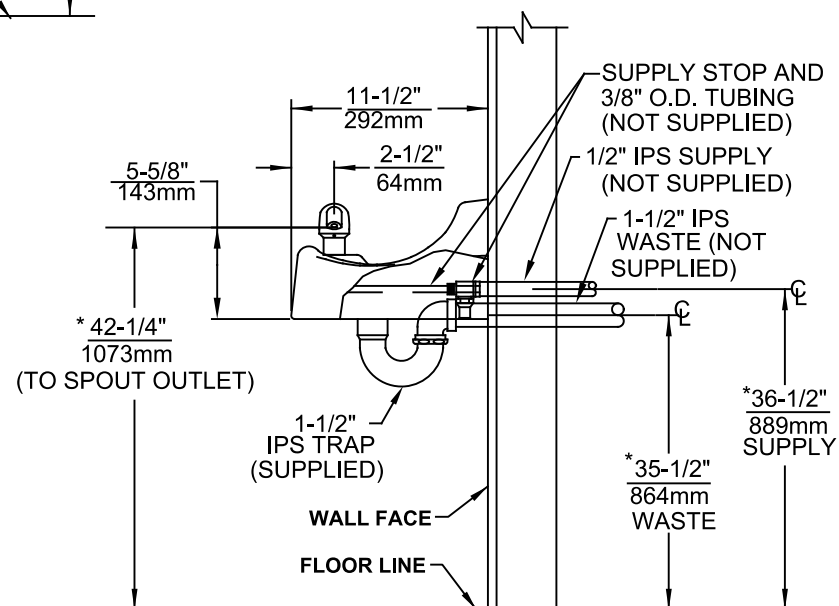
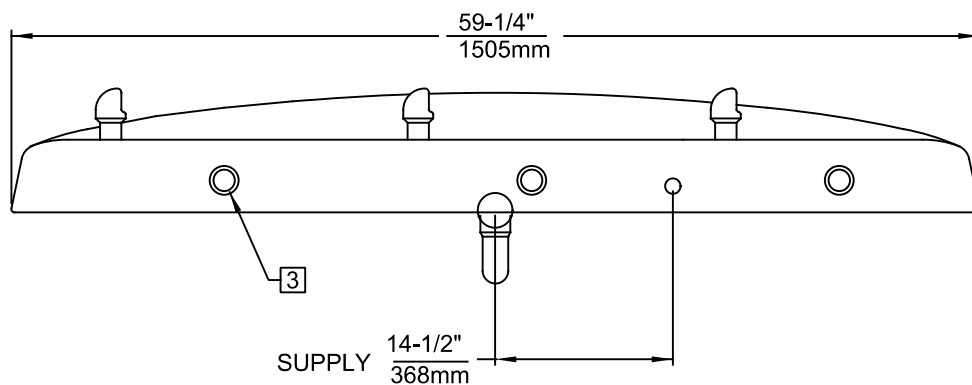
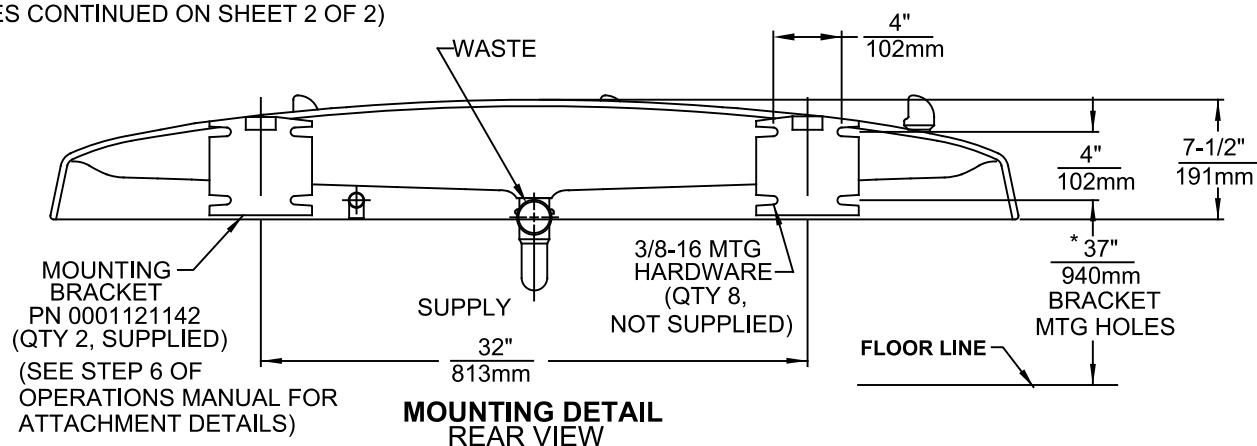


NOTES:

1. ROUGH-IN DIMENSIONS MAY VARY $\pm 1/4"$ (6.4mm)
2. WHEN INSTALLING THIS UNIT LOCAL, STATE OR FEDERAL CODES SHOULD BE ADHERED TO. FOR INSTALLATION HEIGHTS OTHER THAN SHOWN, DIMENSIONS MARKED (*) MUST BE ADJUSTED ACCORDINGLY.

- 3 REFER TO 5874 SERIES OPERATION AND MAINTENANCE MANUAL FOR PUSH BUTTON AND VALVE INSTALLATION/MAINTENANCE INSTRUCTIONS.

(NOTES CONTINUED ON SHEET 2 OF 2)

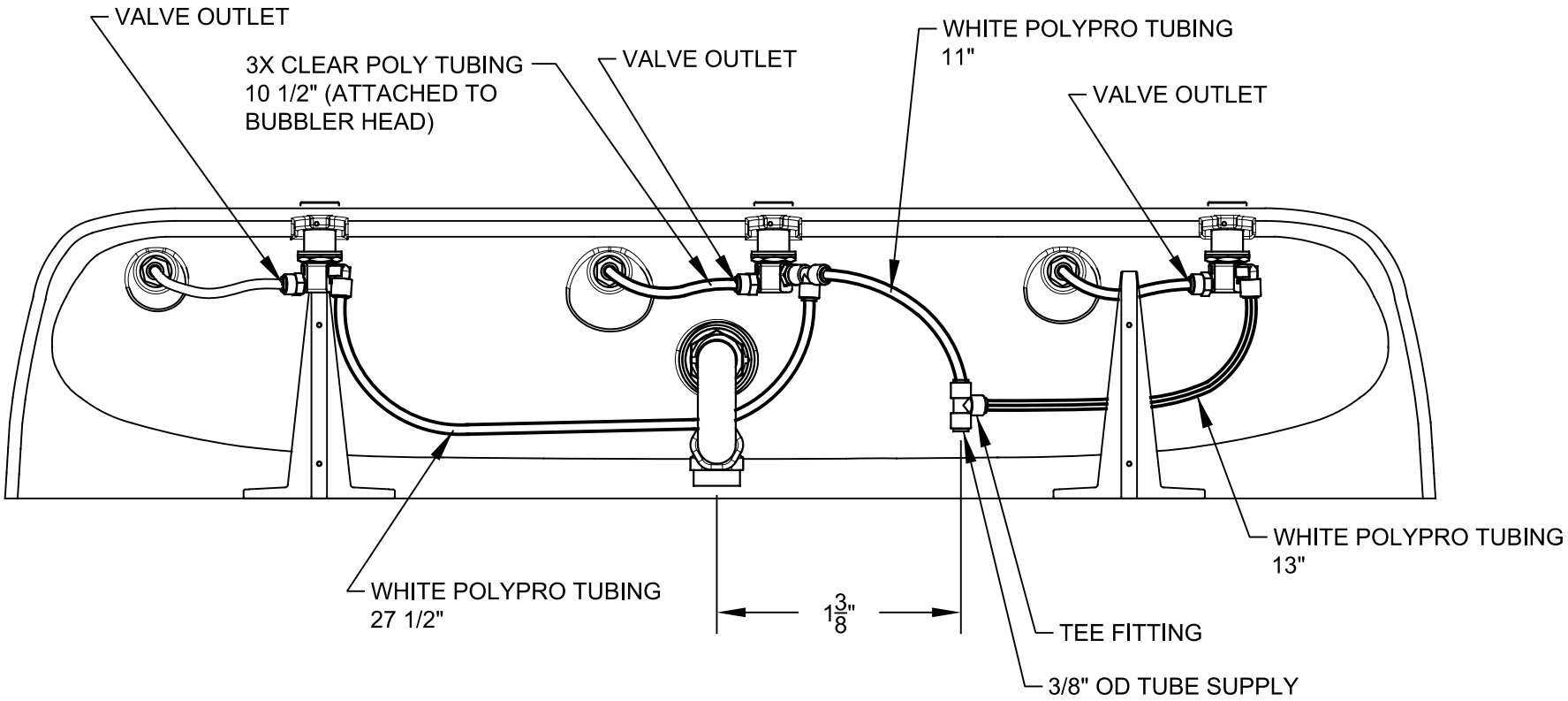


1455 KLEPPE LANE
SPARKS, NEVADA 89431
(775) 359-4712 FAX (775) 359-7424
E-MAIL: HAWS@HAWS.CO.COM
WEBSITE: WWW.HAWS.CO.COM

ECN NO.	REVISED PER	BY:	MODEL(S)	PART NUMBER
	ECN: 5967	FV		0002076860.D
DRAWN:	DATE:	CHKD.:	1435	REVISION
CJL	01-01-91	JC	THREE BUBBLER FOUNTAIN	18
APPROVED:	DATE:	SCALE:	DRAWING TYPE:	INSTALLATION
FV	06/25/24	1:11		
			SIZE:	SHEET 1 OF 2

NOTES: (CONTINUED)

- 4. CONNECT WHITE "POLYPROPYLENE" TUBING ON PRESSURE SIDE (INLET) OF VALVE.
- 5. CONNECT CLEAR "POLYETHYLENE" TUBING ON FREE FLOW SIDE (VALVE TO BUBBLER HEAD) ONLY.



TUBING ROUTING DETAIL
BOTTOM VIEW



1455 KLEPPE LANE
SPARKS, NEVADA 89431
(775) 359-4712 FAX (775) 359-7424
E-MAIL: HAWS@HAWS.CO.COM
WEBSITE: WWW.HAWS.CO.COM

ECN NO. 5188	REVISED PER ECN: 5967	BY: FV	MODEL(S)	PART NUMBER
DRAWN: CJL	DATE: 11-01-91	CHK'D: JC	1435	0002076860.D
APPROVED: FV	DATE: 06/25/24		THREE BUBBLER FOUNTAIN	REVISION
			SCALE: 1:11	18
			DRAWING TYPE: INSTALLATION	SHEET 2 OF 2