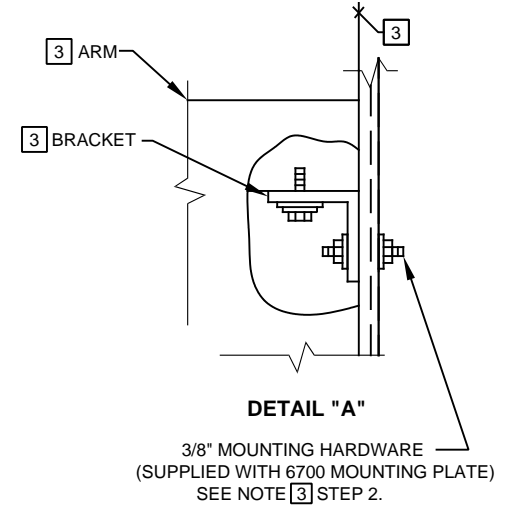
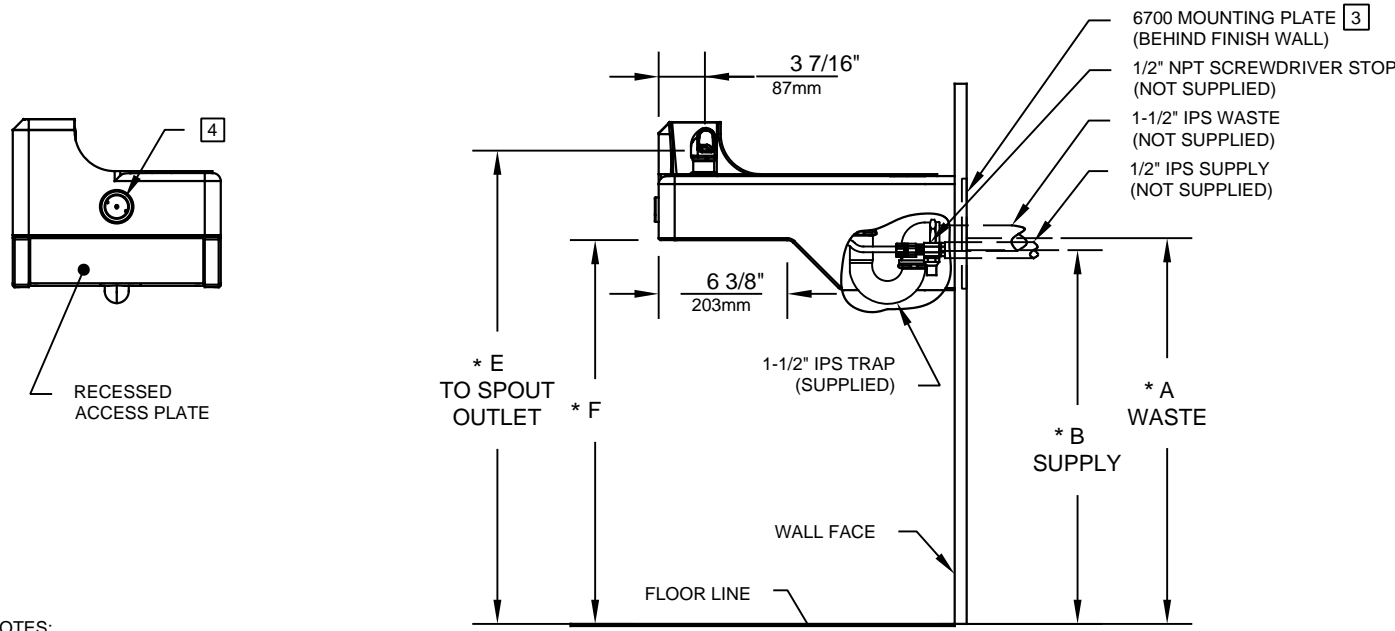


6700 MOUNTING PLATE
MUST BE INSTALLED BEFORE FINISH WORK
THIS PLATE IS REQUIRED - SOLD SEPARATELY



NOTES:

1. HOLD ROUGH-IN DIMENSIONS $\pm 1/4"$ (6.4mm).
2. WHEN INSTALLING THIS UNIT, LOCAL, STATE OR FEDERAL CODES SHOULD BE ADHERED TO. FOR INSTALLATION HEIGHTS OTHER THAN SHOWN, DIMENSIONS MARKED (*) MUST BE ADJUSTED ACCORDINGLY.
3. **PROCEDURE FOR ASSEMBLING ARM TO WALL:**
IMPORTANT: L-BRACKETS ARE PRE-ASSEMBLED AND **MUST NOT** BE LOOSENER FOR ANY REASON.
STEP 1: ATTACH ENTIRE ARM ASSEMBLY TO WALL USING 6700 MOUNTING PLATE (SUPPLIED) USING THE 3/8"-16 X 4" THREADED RODS, WASHERS AND NUTS (SUPPLIED WITH 6700 MTG PLT) AND TIGHTEN SECURELY IN PLACE.
STEP 2: (OPTIONAL) APPLY CAULKING AS NEEDED TO FILL ANY GAP PRESENT BETWEEN ARM AND PEDESTAL.
4. REFER TO 5874 SERIES OPERATION AND MAINTENANCE MANUAL FOR PUSH BUTTON AND VALVE INSTALLATION/MAINTENANCE INSTRUCTIONS.

DIM	ADULT ADA	CHILD ADA
A	27-1/2" / 699mm	24-1/2" / 622mm
B	26-3/8" / 670mm	23-3/8" / 594mm
C	25-1/8" / 638mm	22-1/8" / 562mm
D	24-3/8" / 619mm	21-3/8" / 543mm
E	32-3/4" / 832mm	29-3/4" / 756mm
F	27" / 686mm	24" / 610mm

1455 KLEPPE LANE
 SPARKS, NEVADA 89431
 (775) 359-4712 FAX (775) 359-7424
 E-MAIL: HAWS@HAWSCO.COM
 WEBSITE: WWW.HAWSCO.COM

ECN NO. 4144	REVISED PER ECN: 5527	BY: FV	MODEL(S)	PART NUMBER
DRAWN: SLS	DATE: 07/22/08	CHKD: DP	1047	0002076418.D
APPROVED: FV	DATE: 04/02/20	SCALE: N/A	DRAWING TYPE: INSTALLATION	REVISION 21
			SIZE: A	SHEET 1 OF 1