

NOTES:

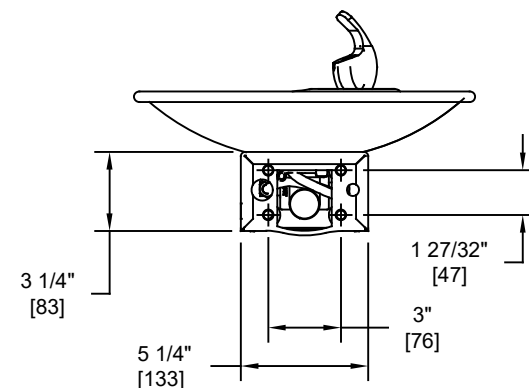
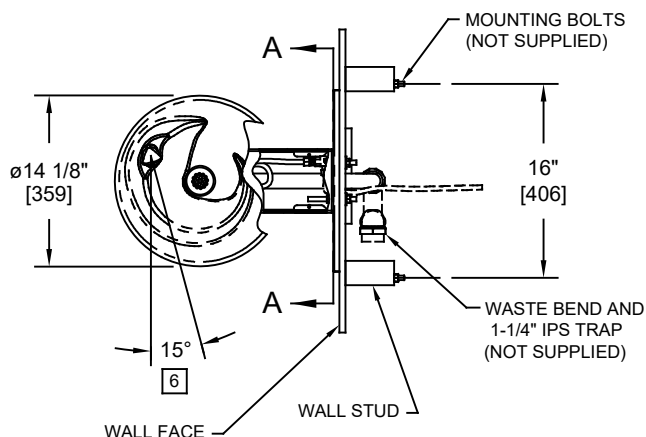
1. HOLD ROUGH-IN DIMENSIONS $\pm 1/8"$ (3.2mm).
2. WHEN INSTALLING THIS UNIT, LOCAL, STATE, OR FEDERAL CODES SHOULD BE ADHERED TO FOR INSTALLATION DIMENSIONS (LOCATIONS), WASTE AND SUPPLY REQUIREMENTS OTHER THAN SHOWN.

INSTALLER MUST PROVIDE TRAP FOR PROPER INSTALLATION.

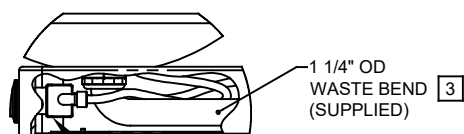
3. REMOVE VALVE FROM PUSH BUTTON TO INSTALL WASTE ELBOW ONTO BOWL. AFTER WASTE ELBOW IS INSTALLED, REINSTALL VALVE AND ADJUST FLOW.

5. REFER TO 5874 SERIES OPERATION AND MAINTENANCE MANUAL FOR PUSH BUTTON AND VALVE INSTALLATION/MAINTENANCE INSTRUCTIONS.

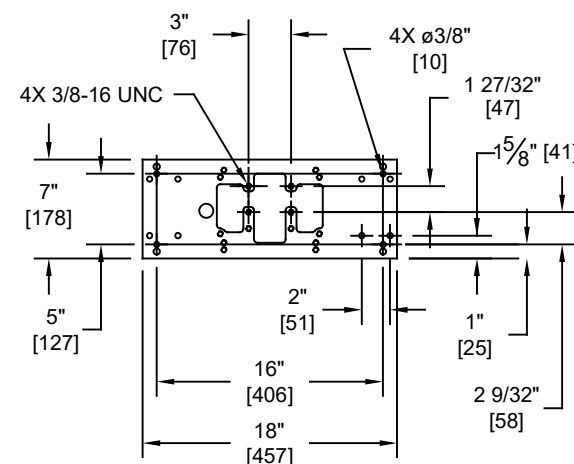
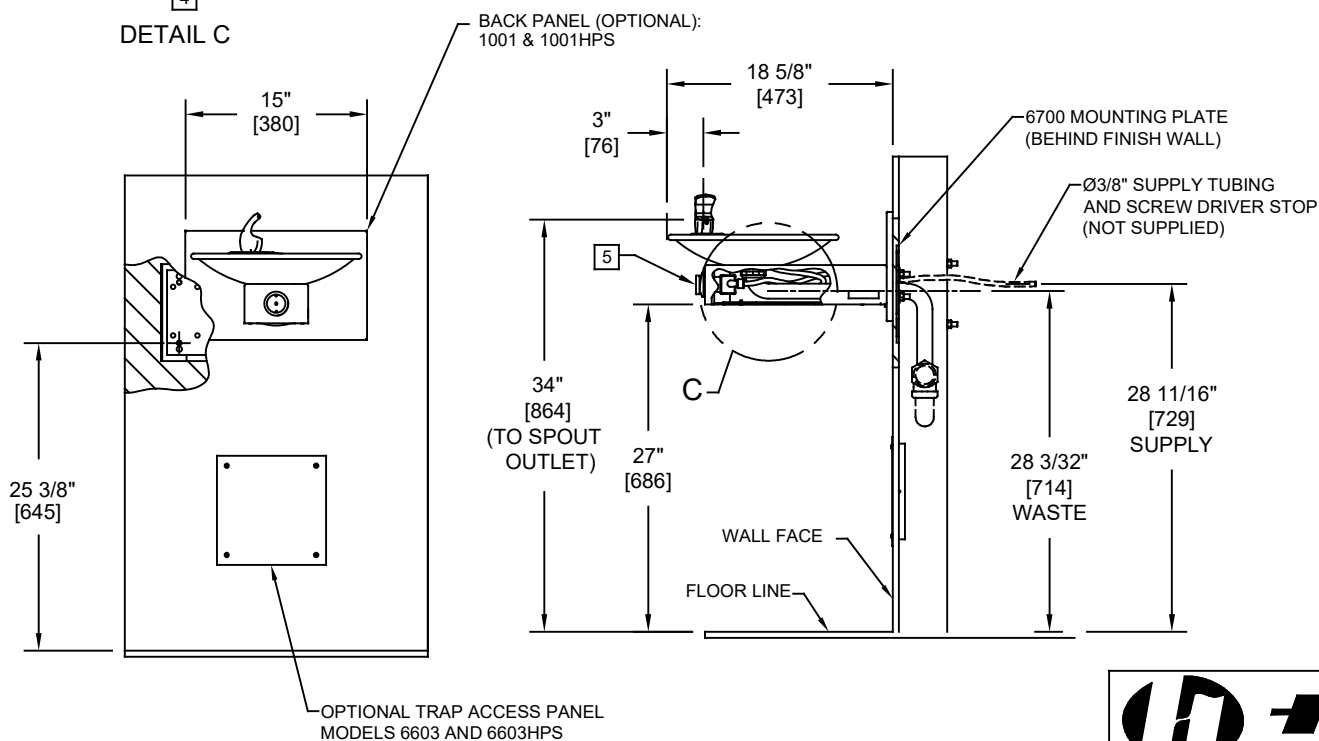
6. MAXIMUM ADJUSTABLE RANGE IS 15° FROM PARALLEL TO BACK WALL.



SECTION A-A
ROTATED 90° INTO VIEW
BRACKET MOUNTING
DETAIL



DETAIL C



**6700 MOUNTING PLATE
MUST BE INSTALLED BEFORE FINISH WORK
THIS PLATE IS REQUIRED - SOLD SEPARATELY.**

				1455 KLEPPE LANE SPARKS, NEVADA 89431 (775) 359-4712 FAX (775) 359-7424 E-MAIL: HAWS@HAWS.CO.COM WEBSITE: WWW.HAWS.CO.COM			
ECN NO.	REVISED PER	BY:	MODEL(S)	1001/1001HPS		PART NUMBER	
DRAWN:	DATE:	CHK'D:				REVISION	
RTM	05/97	KM				22	
APPROVED:	DATE:		SCALE: 1:1	DRAWING TYPE:	INSTALLATION	SIZE: A	SHEET 1 OF 1
FV	09/06/23						