

## FEATURES & BENEFITS

---

## OPTIONS

---

For more information, visit [www.hawsco.com](http://www.hawsco.com) or call (888) 640-4297.



## SPECIFICATIONS

---

The Haws VRK01EFE.B is a valve repair kit for the 9201EFE mixing valve. This kit includes parts to repair the main mixing chamber.

## APPLICATIONS

---

## KIT INSTALLATION INSTRUCTIONS

### VRK01EFE.A: KIT, REPAIR, 9201EFE, COMPLETE

CONSISTS OF VRK01EFE.B AND VRK01EFE.C. FOLLOW INSTRUCTIONS OUTLINED FOR EACH AS NOTED ON THIS PAGE.

### VRK01EFE.B: KIT, REPAIR, 9201EFE, MAIN MIXING CHAMBER (REFER TO SHEET 2)

1. REMOVE 4 COVER CAP SCREWS AS SHOWN.
2. REMOVE COVER.
3. REMOVE O-RING FROM COVER AND REPLACE WITH NEW O-RING FROM KIT.
4. REMOVE OVERLOAD ASSEMBLY FROM COVER BY PULLING STRAIGHT OUT, AND REPLACE WITH NEW OVERLOAD ASSEMBLY FROM KIT.
5. REMOVE PISTON/THERMOSTAT ASSEMBLY FROM VALVE BY PULLING STRAIGHT UP ON PISTON.
6. REMOVE CYLINDER ASSEMBLY FROM VALVE BY PULLING FIRMLY STRAIGHT UP ON THE CYLINDER ASSEMBLY.
7. REMOVE THREE PISTON SPRINGS FROM VALVE FUNNEL.
8. REMOVE VALVE FUNNEL FROM VALVE BY PULLING STRAIGHT UP ON FUNNEL AND FUNNEL O-RING IF IT DOES NOT COME OUT WITH THE FUNNEL.
9. INSTALL NEW FUNNEL O-RING AND FUNNEL FROM KIT.
10. INSTALL NEW CYLINDER ASSEMBLY FROM KIT AS SHOWN ON SHEET 2 BY PRESSING FIRMLY STRAIGHT DOWN AND ROCKING THE ASSEMBLY TO WORK IT PAST THE COLD INLET CHANNEL.
11. INSTALL 3 NEW PISTON SPRINGS FROM KIT INTO VALVE FUNNEL.
12. INSTALL NEW PISTON ASSEMBLY INTO CYLINDER AS SHOWN ON SHEET 2, BEING CAREFUL TO CLOCK THE PISTON SUCH THAT THE THREE FLATS UNDER THE PISTON SIT ON THE PISTON SPRINGS. THE PISTON SHOULD MOVE FREELY AGAINST THE SPRING PRESSURE IN THE CYLINDER.
13. INSTALL THE EXISTING COVER ON THE VALVE (CLOCKING IS NOT CRITICAL) AND INSERT THE FOUR COVER CAP SCREWS.
14. TIGHTEN SCREWS IN A CROSS PATTERN EVENLY UNTIL THE COVER CONTACTS THE VALVE BODY.
15. TORQUE COVER CAP SCREWS TO 62 IN-LBS.

### VRK01EFE.C: KIT, REPAIR, 9201EFE, CHECK STOPS (REFER TO SHEET 3)

1. NOTE: HOT AND COLD CHECK STOP ASSEMBLIES ARE IDENTICAL.
2. REMOVE HOT CHECK STOP COVER WITH 1-3/8" WRENCH OR ADJUSTABLE WRENCH.
3. REMOVE SPRING, CHECK STOP ASSEMBLY, CAGE, AND MESH SCREEN FROM VALVE.
4. CLEAN ANY VISIBLE DEBRIS FROM CHECK STOP CAVITY.
5. INSTALL NEW MESH SCREEN, CAGE, AND CHECK STOP ASSEMBLY FROM KIT AS SHOWN ON SHEET 3.
6. INSTALL NEW SPRING, ADJUSTMENT SCREW, AND CHECK STOP COVER FROM KIT. ADJUSTMENT SCREW SHOULD ALWAYS BE FULLY OUT (CCW) UNLESS THERE IS A NEED TO SHUT OFF THE HOT OR COLD WATER FOR TESTING.
7. REPEAT STEPS 2-6 WITH COLD CHECK STOP ASSEMBLY.

### VRK01EFE.E: KIT, BASIC MAINT, 9201EFE, T-STATS+O-RINGS

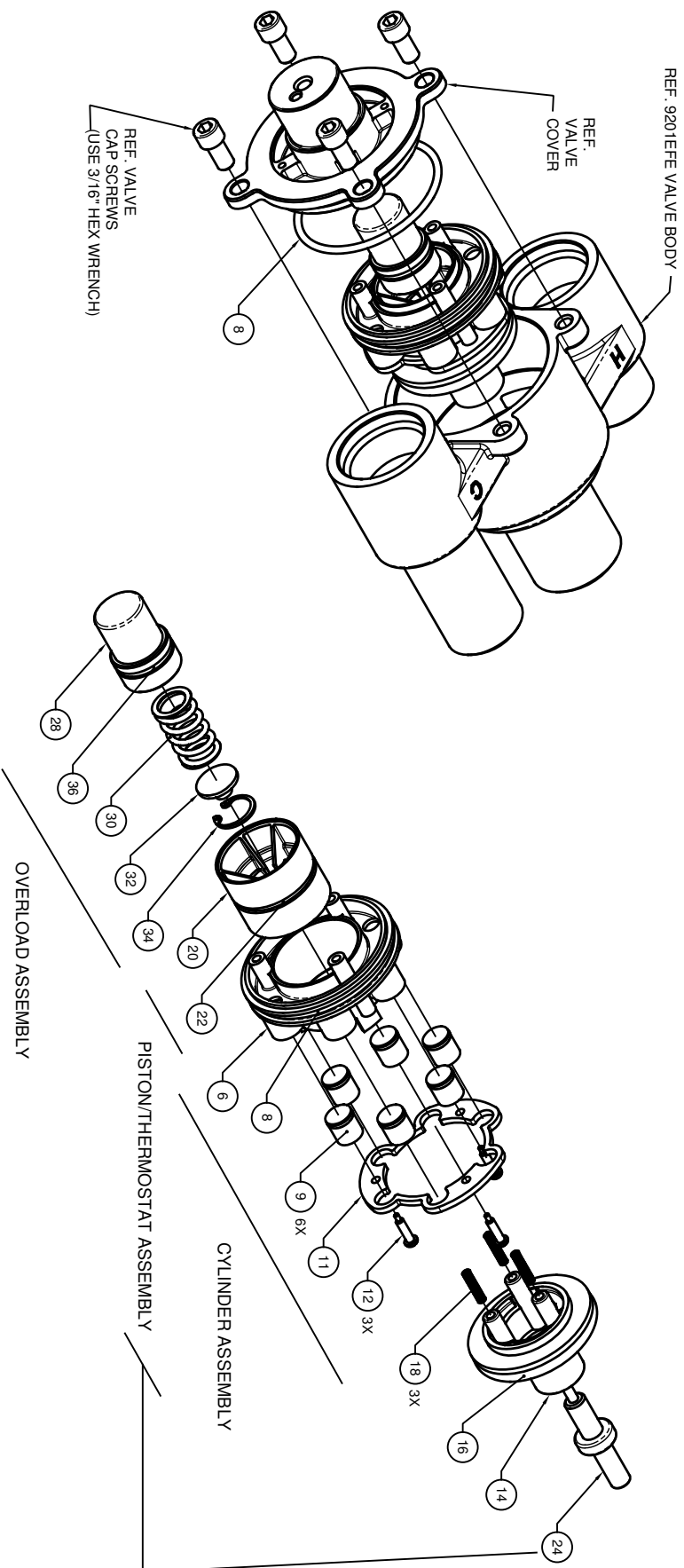
1. REFER TO EXPLODED VIEWS IN SHEETS 2-3 AND DISASSEMBLY AND RE-ASSEMBLY INSTRUCTIONS ON THIS PAGE.
2. RECOMMEND ANY DRY O-RINGS BE LUBRICATED WITH FOOD GRADE SILICONE LUBRICANT, SUCH AS DOW CORNING 111 PRIOR TO INSTALLATION.
3. THERMOSTATS SHOULD BE INSTALLED SNUGLY, TAKING CARE NOT TO DAMAGE THEM.
4. MAIN COVER CAP SCREWS SHOULD BE TORQUED TO 62 IN-LBS PER VRK01EFE.B INSTRUCTIONS.



# Haws®

1459 KLEPPE LANE  
SPARKS, NEVADA, 89431  
(775) 359-4712 FAX (775) 359-7424  
E-MAIL: HAWS@HAWSCO.COM  
WEBSITE: WWW.HAWSCO.COM

ECN NO. REVISED PER BY:	MODEL(S)	PART NUMBER
5426 ECN: 5426 DP	VRK01EFE.A/B./C./E	0510000963
DRAWN: DATE: CHK'D:	VALVE REPAIR KITS	REVISION:
DP 05/13/19 EV		1
APPROVED: DATE:	SCALE: 1:2 1/2 DRAWING TYPE:	INSTALLATION
NE 05/21/19		SIZE: A SHEET 1 OF 3



**VRK01EFE.B MAIN MIXING CHAMBER REPAIR KIT**

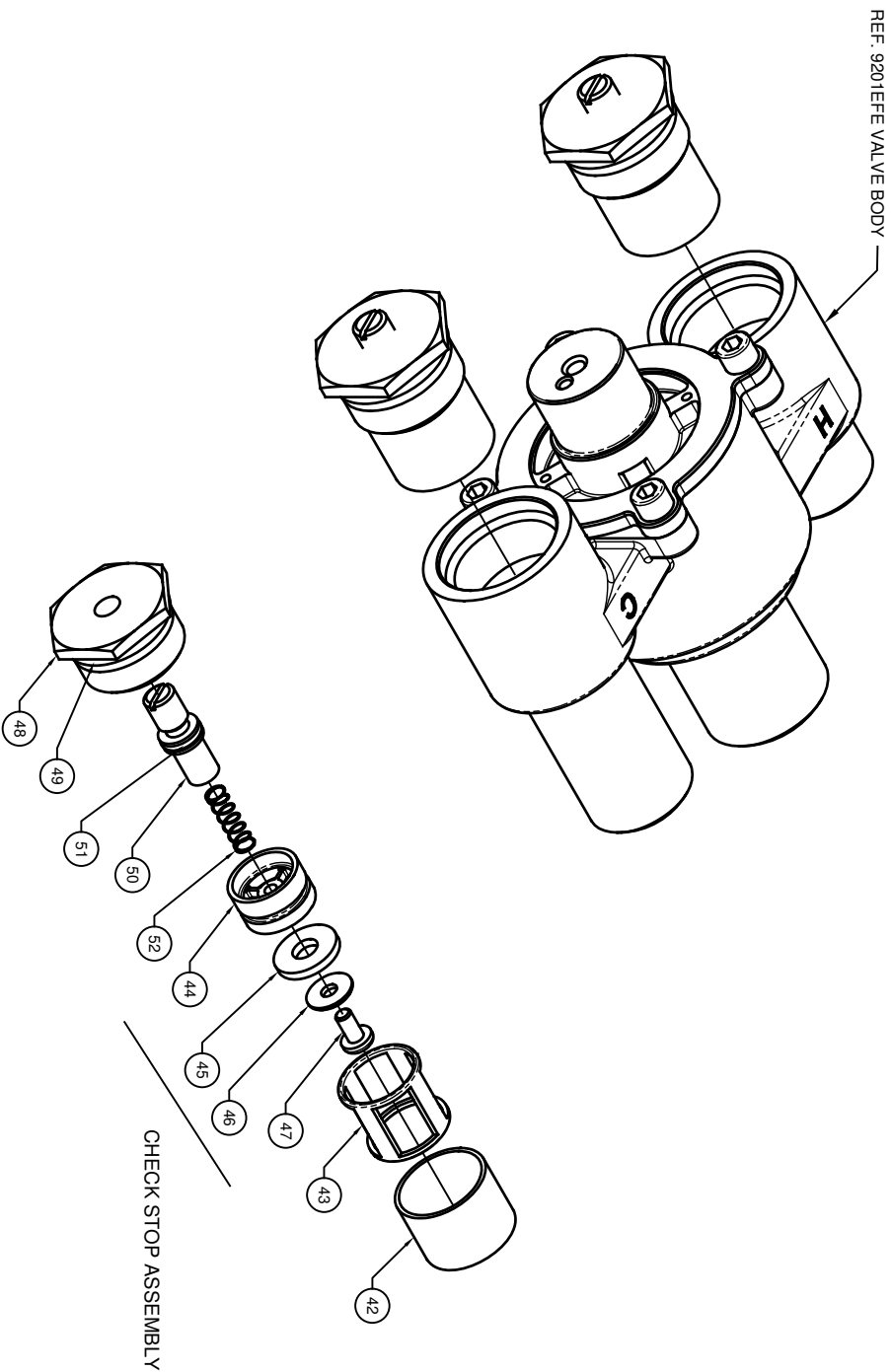
ITEM #	SUB ASSEMBLY	QTY	DESCRIPTION	VRK01EFE.B BASIC MAINT. KIT
8	N/A	1	O-RING DASH# 137 (2.050 ID X .103 W)	INCLUDED
28	OVERLOAD ASSEMBLY	1	OVERLOAD HOUSING	INCLUDED
36	OVERLOAD ASSEMBLY	1	O-RING DASH# 018 (.739 ID X .070 W)	INCLUDED
30	OVERLOAD ASSEMBLY	1	OVERLOAD COMPRESSION SPRING	INCLUDED
22	OVERLOAD ASSEMBLY	1	OVERLOAD INSERT	INCLUDED
34	OVERLOAD ASSEMBLY	1	RETAINING RING	INCLUDED
20	PISTON/THERMOSTAT ASSY	1	PLUNGER	INCLUDED
22	PISTON/THERMOSTAT ASSY	1	O-RING DASH# 024 (1.114 ID X .070 W)	INCLUDED
24	PISTON/THERMOSTAT ASSY	1	THERMOSTAT MAIN 60-100	INCLUDED
6	CYLINDER ASSEMBLY	1	SLEEVE	INCLUDED
8	CYLINDER ASSEMBLY	1	O-RING DASH# 137 (2.050 ID X .103 W)	INCLUDED
9	CYLINDER ASSEMBLY	6	CHECK VALVE 1.0MM	INCLUDED
11	CYLINDER ASSEMBLY	1	CHECK VALVE RETAINER	INCLUDED
12	CYLINDER ASSEMBLY	4	SCREW #4 SST	INCLUDED
14	N/A	3	PISTON SPRING SST	INCLUDED
18	N/A	1	FUNNEL, VALVE	INCLUDED
16	N/A	1	O-RING DASH# 025 (1.475 ID X .210 W)	INCLUDED

**VRK01EFE.B MAIN MIXING CHAMBER REPAIR KIT  
SHOWN ON THIS SHEET**

**1456 KLEPPE LANE**  
**SPARKS, NEVADA 89431**  
**(775) 359-4712 FAX (775) 359-7424**  
**E-MAIL: HAWS@HAWS.CO.COM**  
**WEBSITE: WWW.HAWS.CO.COM**

---

ECON. REVISED PERBY: 5428	MODEL(S): VRK01EFE.A/B./C./E	PART NUMBER: 0510000953
DATE: 05/13/19	DATE: 05/13/19	REVISION: 1
CHKD: EV	SCALE: N/A	INSTALLATION: _____
APPROVED: _____	DRAWING TYPE: _____	SIZE: A SHEET 2 OF 3



NOTE: HOT AND COLD CHECK STOPS ARE IDENTICAL. KIT INCLUDES BOTH.

**VRK01EFE.C CHECK STOPS REPAIR KIT**

ITEM #	SUB ASSEMBLY	QTY	DESCRIPTION	VRK01EFE.E BASIC MAINT. KIT
48	N/A	2	CHECK STOP COVER BONNET	
49	N/A	2	O-RING DASH# 215 (1.046 ID X .139 W)	INCLUDED
51	N/A	2	O-RING DASH# 012 (.364 ID X .070 W)	INCLUDED
50	N/A	2	STEM CHECK STOP ADJUST. SCREW	
52	N/A	2	SPRING	
44	CHECK STOP ASSY	2	POPPET (NO O-RING)	
45	CHECK STOP ASSY	2	WASHER EPDM	
46	CHECK STOP ASSY	2	WASHER SST	
47	CHECK STOP ASSY	2	SCREW SST 10-24	
43	N/A	2	CAGE SLEEVE	
42	N/A	2	MESH SCREEN SST	

**VRK01EFE.C CHECK STOPS REPAIR KIT  
SHOWN ON THIS SHEET**

**1459 KLEPPE LANE**  
 SPARKS, NEVADA, 89431  
 (775) 359-4712 FAX (775) 359-7424  
 E-MAIL: HAWS@HAWS.CO.COM  
 WEBSITE: WWW.HAWS.CO.COM

ECN NO. REVISED PER BY:	MODEL(S)	PART NUMBER
5428	VRK01EFE.A/B./C./E	0510000953
DATE: 05/13/19	DATE: DP	REVISION: 1
CHKD: EV	APP: NE	
DATE: 05/21/19	SCALE: N/A	DRAWING TYPE: INSTALLATION
SIZE: A	SHEET: 3	OF: 3