



model **SK3**
Fountain Skirt

FEATURES & BENEFITS

OPTIONS

For more information, visit www.hawsc.com or call (888) 640-4297.



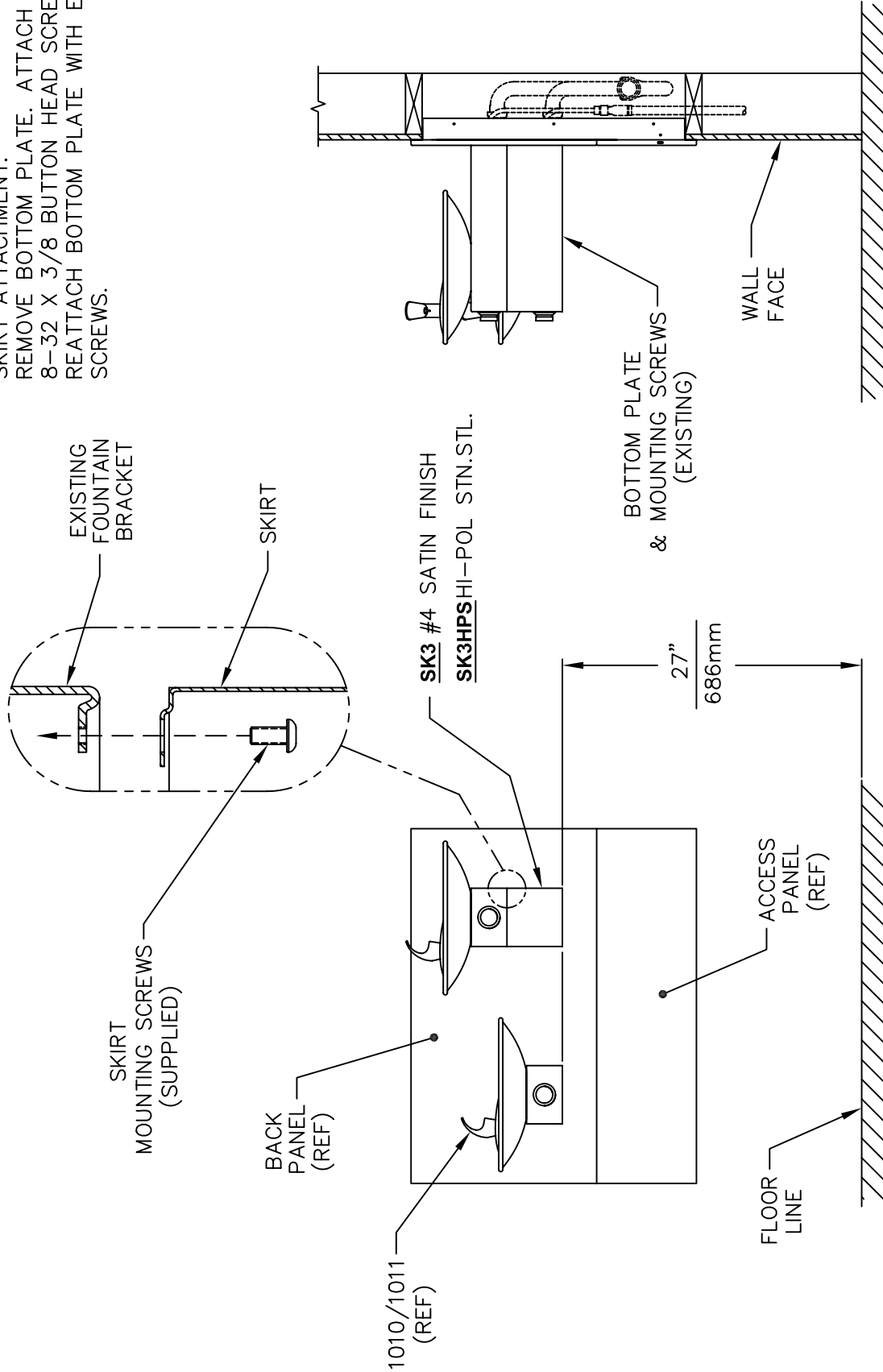
SPECIFICATIONS

Model SK3 is a wrap around satin finish stainless steel cane touch skirt for installation on the high unit in some applications that may need to comply with ADA protruding objects guidelines. For use on Models Haws 1011 and H1011 series fountains.

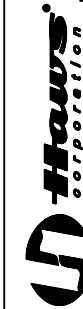
APPLICATIONS

THIS DOCUMENT IS TRUE AND CORRECT AT TIME OF PUBLICATION. CONTINUED PRODUCT IMPROVEMENTS MAKE SPECIFICATIONS AND MEASUREMENTS SUBJECT TO CHANGE WITHOUT NOTICE.

SKIRT ATTACHMENT:
 REMOVE BOTTOM PLATE. ATTACH SKIRT WITH 8-32 X 3/8 BUTTON HEAD SCREWS SUPPLIED. REATTACH BOTTOM PLATE WITH EXISTING 8-32 SCREWS.



**ASSEMBLY SHOWN WITH OPTIONAL
 MTGFR.DF2 MOUNTING FRAME
 AND ACCESS PANEL**



INFO FAX : 1-888-FAX-HAWS (1-888-329-4297)
 1455 Kleppe Ln, Sparks NV, 89431
 Phone: 775-359-4712 Fax: 775-359-7424
 Haws Ag, Bachweg 3, CH-3401 Burgdorf Switzerland
 Haws Mtg Pte Ltd 74 Sungai Kadut Loop Singapore 729531
 e-mail: Haws@hawsco.com website: www.hawsco.com

FOR NO.	REVISED BY	DATE	BY	DATE	BY	DATE	BY
1010/1011	ECN: 4087	01/09	BW	01/09	SK3/SK3HPS	06/07/08	0322
APPROVED:	DATE	INFO FAX DOC #	SCALE:	DRAWING TYPE:	INSTALLATION/FABRICATION	SIZE:	A SH: 1 OF 1