

## FEATURES & BENEFITS

### CONSTRUCTION

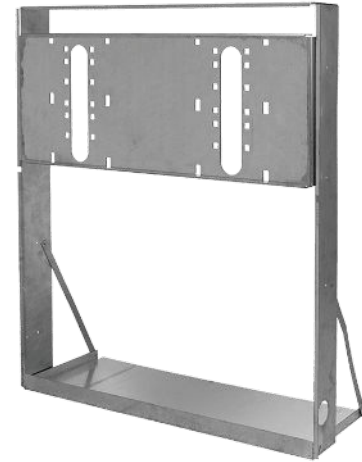
Constructed of 16 gauge galvanized steel with welded-in heavy-duty 10 gauge mounting plate, this frame provides the needed support for Haws 'Hi-Lo' drinking fountains along with added corrosion resistance for long life.

### MOUNTING

Normally mounted in advance, this frame allows for precise mounting and superior finish when aesthetics is a must.

## OPTIONS

For more information, visit [www.hawsc.com](http://www.hawsc.com) or call (888) 640-4297.

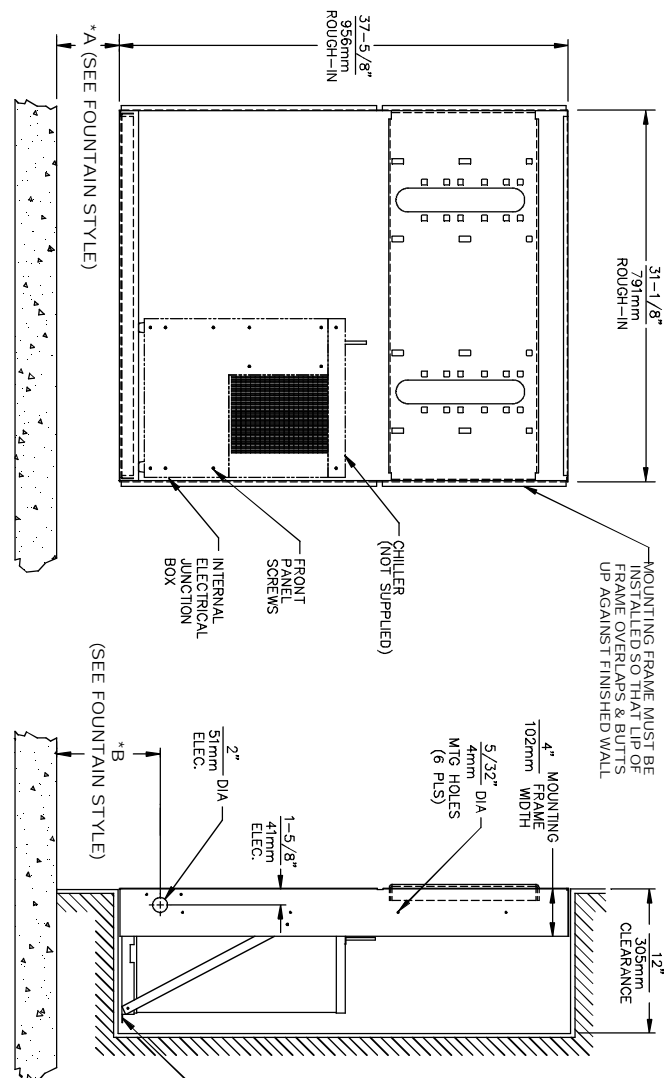


## SPECIFICATIONS

Model MTGFR.LG "Hi-Lo" in-wall mounting frame is made of 16 gauge galvanized steel with welded-in heavy-duty 10 gauge mounting plate with pre-punched mounting holes, and is used with Haws dual bubbler electric fountains.

## APPLICATIONS

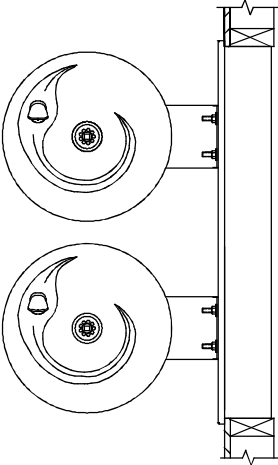
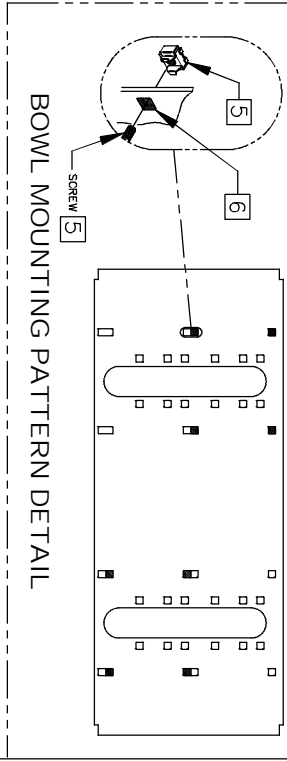
Haws produces mounting plates and frames to assist in the installation process as well as to provide solid bases for the wall mounted designed fountains. Mounting plates and frames meet the requirements solely for the specified applicable fountains and are not designed to be used in the installation of any unspecified fountain.



- CHILLER ELECTRICAL INSTALLATION**
1. ENSURE ELECTRICAL POWER IS OFF AND POWER MATCHES VOLTAGE, PHASE AND CYCLE LISTED ON CHILLER LABEL.
  2. REMOVE FRONT PANEL TO GAIN ACCESS TO INTERNAL JUNCTION BOX.
  3. HARDWIRE CHILLER THROUGH ITS SIDE. WIRE IN ACCORDANCE WITH LOCAL, STATE OR FEDERAL CODES.
  4. REPLACE FRONT PANEL. DO NOT APPLY POWER UNTIL WATER SUPPLY IS CONNECTED AND ON.

**MOUNTING FRAME INSTALLATION**

1. THIS FRAME IS USED WITH SEVERAL DIFFERENT MODELS. SEE INSTALLATION INSTRUCTIONS RECEIVED WITH THE FOUNTAIN FOR PROPER LOCATIONS OF 5/16-18 PANEL NUT RETAINERS. FOR ROUGH-IN USE THE APPROPRIATE DIMENSIONS SHOWN ABOVE. WASTE AND SUPPLY HEIGHTS ARE ALSO DETAILED ON THE FOUNTAIN INSTALLATION INSTRUCTIONS.
2. HOLD ROUGH-IN DIMENSIONS  $\pm 1/8"$  (3.2mm).
3. WHEN INSTALLING THIS UNIT LOCAL, STATE OR FEDERAL CODES SHOULD BE ADHERED TO. FOR DIFFERENT INSTALLATION HEIGHTS, OTHER THAN SHOWN, DIMENSIONS MARKED (\*) MUST BE ADJUSTED ACCORDINGLY.
4. ALIGN HOLES IN CHILLER SUPPORT TRAY WITH HOLES IN FRAME AND FASTEN IN PLACE WITH #10 SHEET-METAL SCREWS SUPPLIED WITH UNIT.
5. FOUNTAIN REMOVAL: FIRST REMOVE SCREWS AND THEN SQUEEZE CLIPS ON NUT RETAINER TO POP OUT. INSTALL IS REVERSE OF REMOVAL.
6. HOLE COMBINATION SHOWN ABOVE IS FOR USE WITH LOW FOUNTAIN ON THE RIGHT AND HIGH FOUNTAIN ON THE LEFT. USE OPPOSITE HOLES FOR HIGH ON RIGHT AND LOW ON LEFT.
7. IMPORTANT: A L.H. LOW (OPTIONAL) CONFIGURATION WILL REQUIRE A DIFFERENT BACK PANEL AND THE WASTE AND SUPPLY DIMENSIONS SHOWN (\*) MUST BE REVERSED.



\* IF YOUR FOUNTAIN IS THIS STYLE USE THESE DIMENSIONS

A	B
2-1/4" (57mm)	5-3/4" (146mm)

\* IF YOUR FOUNTAIN IS THIS STYLE USE THESE DIMENSIONS

A	B
3-15/16" (100mm)	7-7/16" (189mm)

**INFO FAX : 1-888-FAX-HAWS (1-888-329-4297)**  
 1455 Klappé Ln, Sparks, NY, 89431  
 Phone: 775-359-4712 Fax: 775-359-7424  
 Haws Ag, Böhmerg 3 CH-3401 Burgdorf, Switzerland  
 Haws Wfg Pte Ltd 74 Sungai Kadut Loop Singapore 729531  
 e-mail: Haws@hawsco.com website: www.hawsco.com

FOR NO. 1	REVISION PER	DATE	MODEL(S):
D. ZHOU	ENCL 1/18	06/97	MTGFR LG MOUNTING FRAME DUAL
APPROVED:	DATE:	SCALE: 1:10	DRAWING TYPE: INSTALLATION/BACKPACK
SIZE: A	SHT: 1	PART NUMBER: 06665A00 18	