

## FEATURES & BENEFITS

### CONSTRUCTION

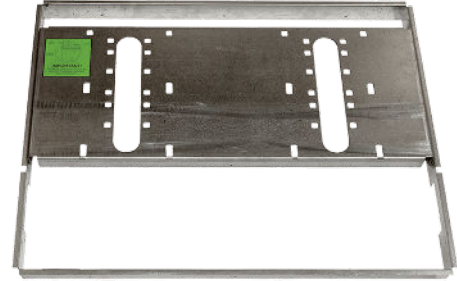
Constructed of 16 gauge galvanized steel with welded-in heavy-duty 10 gauge mounting plate, this frame provides the needed support for Haws 1011 series drinking fountains along with added corrosion resistance for long life.

### MOUNTING

Galvanized frame and 10 gauge surface plate provide the maximum mounting strength for the 'Hi-Lo' MS style Haws drinking fountains.

## OPTIONS

For more information, visit [www.hawsc.com](http://www.hawsc.com) or call (888) 640-4297.



## SPECIFICATIONS

Model MTGFR.DF2 "Hi-Lo" in-wall mounting frame is made of 16 gauge galvanized steel with welded-in heavy-duty 10 gauge mounting plate with pre-punched mounting holes. For use with Haws 1011 series fountains, and provides access to the in-wall traps.

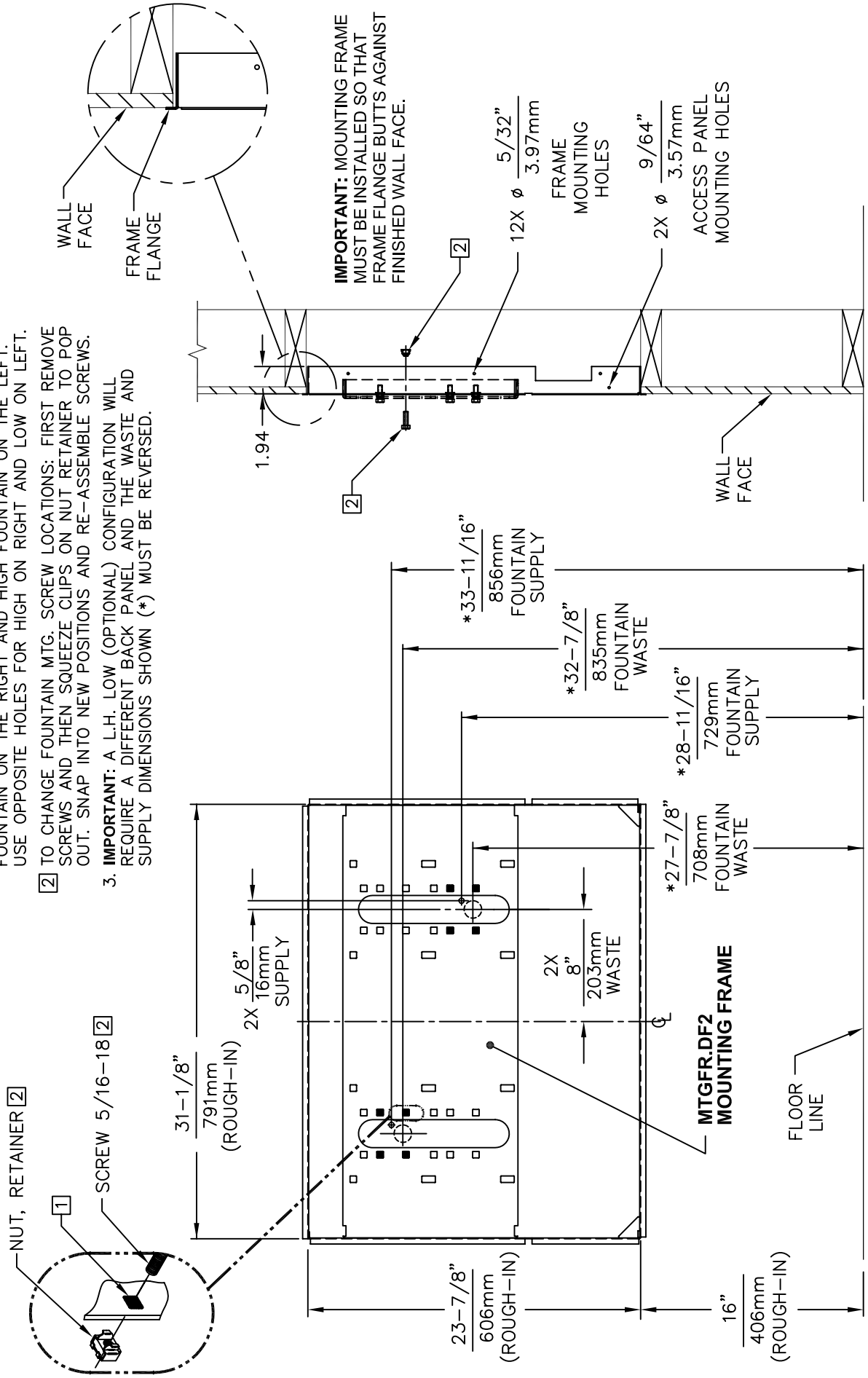
## APPLICATIONS

Haws produces mounting plates and frames to assist in the installation process as well as to provide solid bases for the wall mounted designed fountains. Mounting plates and frames meet the requirements solely for the specified applicable fountains and are not designed to be used in the installation of any unspecified fountain.

THIS DOCUMENT IS TRUE AND CORRECT AT TIME OF PUBLICATION. CONTINUED PRODUCT IMPROVEMENTS MAKE SPECIFICATIONS AND MEASUREMENTS SUBJECT TO CHANGE WITHOUT NOTICE.

**NOTES:**


- 1 HOLE COMBINATION SHOWN BELOW IS FOR USE WITH LOW FOUNTAIN ON THE RIGHT AND HIGH FOUNTAIN ON THE LEFT. USE OPPOSITE HOLES FOR HIGH ON RIGHT AND LOW ON LEFT.
- 2 TO CHANGE FOUNTAIN MTG. SCREW LOCATIONS: FIRST REMOVE SCREWS AND THEN SQUEEZE CLIPS ON NUT RETAINER TO POP OUT. SNAP INTO NEW POSITIONS AND RE-ASSEMBLE SCREWS.
3. **IMPORTANT:** A L.H. LOW (OPTIONAL) CONFIGURATION WILL REQUIRE A DIFFERENT BACK PANEL AND THE WASTE AND SUPPLY DIMENSIONS SHOWN (\*) MUST BE REVERSED.



**IMPORTANT:** MOUNTING FRAME MUST BE INSTALLED SO THAT FRAME FLANGE BUTTS AGAINST FINISHED WALL FACE.

4. HOLD ROUGH-IN DIMENSIONS  $\pm 1/8"$  (3.2mm).
5. WHEN INSTALLING THIS UNIT, LOCAL, STATE OR FEDERAL CODES SHOULD BE ADHERED TO. FOR INSTALLATION HEIGHTS OTHER THAN SHOWN, DIMENSIONS MARKED (\*) MUST BE ADJUSTED ACCORDINGLY.

**FOR USE WITH MODELS:  
1011MS & 1011HPSMS**



INFO FAX : 1-888-FAX-HAWS (1-888-329-4297)  
 1455 Kleppe Ln, Sparks NV, 89431  
 Phone: 775-359-4712 Fax: 775-359-7424  
 Haws Ag, Bachweg 3 CH-3401 Birsdorf Switzerland  
 Haws Mfg Pte Ltd, 74 Sungei Kadut Loop Singapore 729531  
 e-mail: haws@hawscc.com Website: www.hawscc.com

EST. NO.	REVISION PER	DATE	BY	DATE	APPROVED
	ECN: 4173	08/97			

MODEL(S): MOUNTING FRAME  
 MTGFR.DF2  
 INFO. FAX. DOC. # 26843732  
 SCALE: 1:10  
 DRAWING TYPE: INSTALLATION/FABRACK  
 DRAWING NUMBER: 13161C00  
 SIZE: A  
 SHEET: 1 OF 1