

FEATURES & BENEFITS

CONSTRUCTION

Constructed of 16 gauge galvanized steel with welded-in heavy-duty 10 gauge mounting plate, this frame provides the needed support for Haws H1117.8 series drinking fountains, along with added corrosion resistance for long life.

MOUNTING

Normally mounted in advance, this frame allows for precise mounting and superior finish when aesthetics is a must.

OPTIONS

For more information, visit www.hawsc.com or call (888) 640-4297.



SPECIFICATIONS

Model MTGFR.17 in-wall mounting frame is made of 16 gauge galvanized steel with welded-in heavy-duty 10 gauge mounting plate with pre-punched mounting holes, and is used with Haws H1117.8 series fountains.

APPLICATIONS

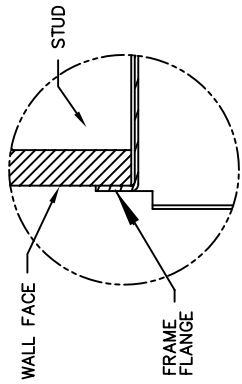
Haws produces mounting plates and frames to assist in the installation process as well as to provide a solid base for the wall mounted designed fountains. Mounting plates and frames meet the requirements solely for the specified applicable fountains and are not designed to be used in the installation of any unspecified fountain.

THIS DOCUMENT IS TRUE AND CORRECT AT TIME OF PUBLICATION. CONTINUED PRODUCT IMPROVEMENTS MAKE SPECIFICATIONS AND MEASUREMENTS SUBJECT TO CHANGE WITHOUT NOTICE.

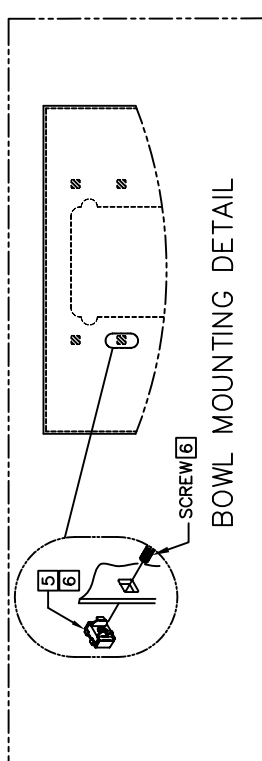
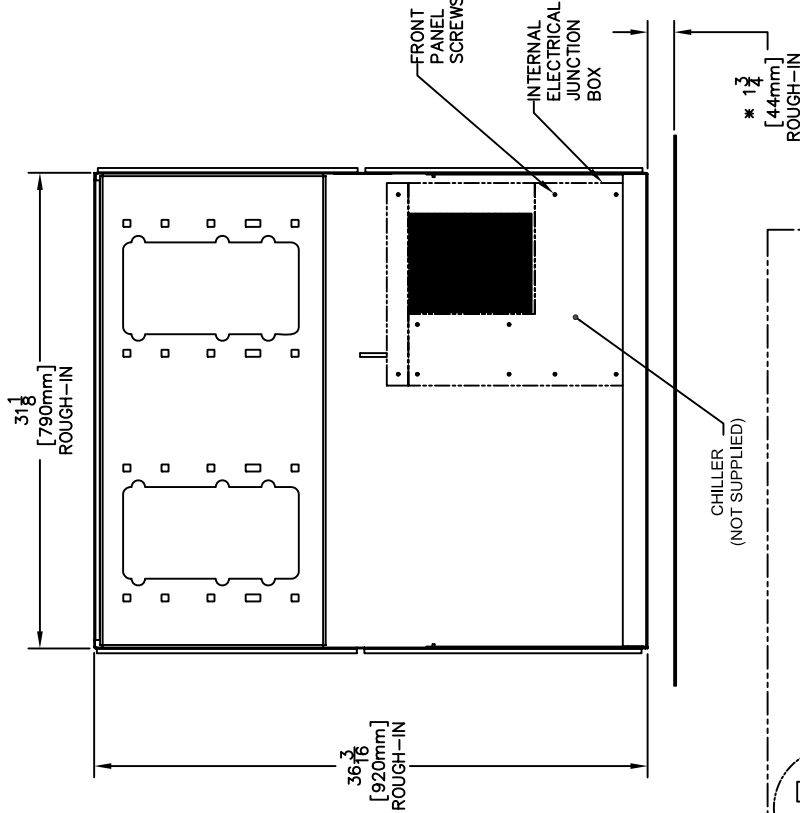
MOUNTING FRAME INSTALLATION:

1. HOLD ROUGH-IN DIMENSIONS $\pm 1/8"$ (3.2mm).
2. THIS FRAME WILL ACCOMMODATE SEVERAL DIFFERENT BOWL MOUNTING HEIGHTS. SEE MODEL H117.8 INSTALLATION DRAWING (SHT. 2 OF 2) RECEIVED WITH THE FOUNTAIN FOR PROPER LOCATIONS OF 5/16"-18 PANEL NUT RETAINERS. WASTE AND SUPPLY HEIGHTS ARE ALSO DETAILED ON MODEL H117.8 INSTALLATION DRAWING (SHT. 1 OF 2).
3. WHEN INSTALLING THIS UNIT, LOCAL, STATE OR FEDERAL CODES SHOULD BE ADHERED TO. FOR DIFFERENT INSTALLATION HEIGHTS OTHER THAN SHOWN, DIMENSIONS MARKED (*) MUST BE ADJUSTED ACCORDINGLY.
4. ALIGN HOLES IN CHILLER SUPPORT TRAY WITH HOLES IN FRAME AND FASTEN IN PLACE WITH #10 SHEET-METAL SCREWS SUPPLIED WITH UNIT.
5. INSERT 5/16"-18 PANEL NUT RETAINERS (SUPPLIED WITH FOUNTAIN) FROM OPPOSITE SIDE OF OPENINGS (SHOWN BY DARKENED HOLES). HOLE COMBINATION SHOWN (INSET) IS FOR REF. ONLY.
6. TO CHANGE FOUNTAIN MTG. SCREW LOCATIONS, FIRST REMOVE SCREWS AND THEN SQUEEZE CLIPS ON NUT RETAINER TO POP OUT (SUPPLIED WITH FOUNTAIN). SNAP INTO NEW POSITIONS AND RE-ASSEMBLE SCREWS.

IMPORTANT: MOUNTING FRAME MUST BE INSTALLED SO THAT LIP OF FRAME BUTTS AGAINST FINISHED WALL FACE.



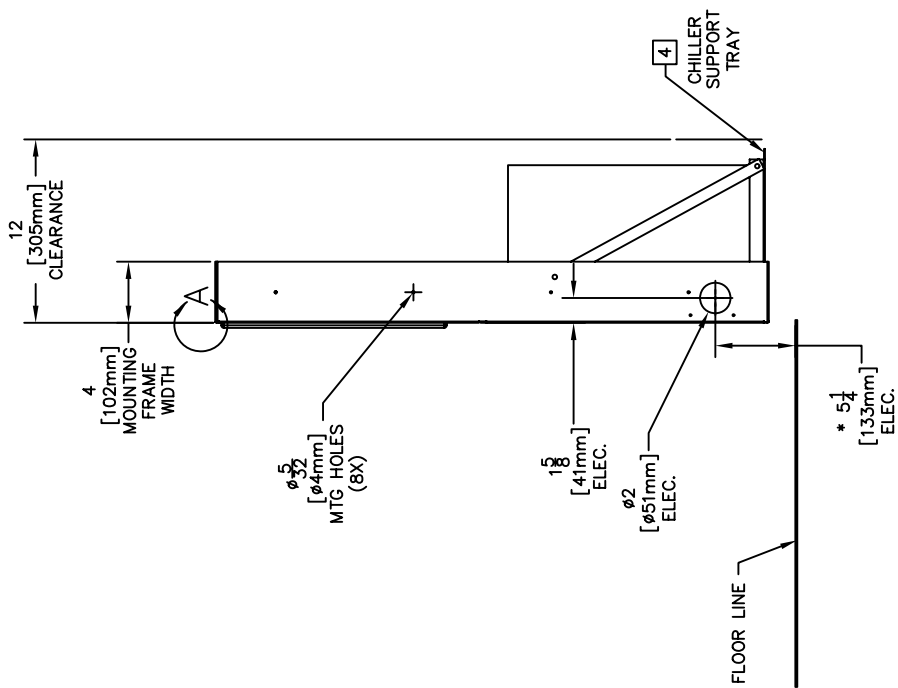
DETAIL A



BOWL MOUNTING DETAIL

CHILLER ELECTRICAL INSTALLATION:

1. ENSURE ELECTRICAL POWER IS OFF AND POWER MATCHES VOLTAGE, PHASE AND CYCLE LISTED ON CHILLER LABEL
2. REMOVE FRONT PANEL TO GAIN ACCESS TO INTERNAL JUNCTION BOX.
3. HARDWIRE CHILLER THROUGH ITS SIDE. WIRE IN ACCORDANCE WITH LOCAL, STATE AND FEDERAL CODES.
4. REPLACE FRONT PANEL. DO NOT APPLY POWER UNTIL UNIT WATER SUPPLY IS CONNECTED AND ON.



INFO FAX : 1-888-FAX-HAWS (1-888-329-4297)
 1455 Kleppe Ln, Sparks NV, 89431
 Phone: 775-359-4712 Fax: 775-359-7424
 Haws Ag, Bachweg 3, CH-3401 Burgdorf Switzerland
 Haws Mtg Pte Ltd 174 Sungai Kadut Loop Singapore 729531
 e-mail: Haws@hawsco.com website: www.hawsco.com

EST. NO. / REVISED PER	DATE	MODEL(S)
3885 / ECN: 4181	VWC	MTGFR 17
DRAWN: G. FENNER	DATE: 10-31-06	INFO. FAX. DOC. # 26843717
APPROVED:	DATE:	SCALE: 1:1
DRAWING TYPE: INSTALLATION/FABRACK		SHEET: 1 OF 1