

FEATURES & BENEFITS

CONSTRUCTION

FDA approved high-density green polyethylene tank provides the light and durable construction required in a portable unit.

MOUNTING

J-shaped stainless steel wall bracket makes for a well constructed portable mount for easy removal and re-mount.

TEMPERED WATER

Heated, insulated blanket provides ANSI compliant tempered water in operating temperatures to -20° F (-30° C). Unit will stay tempered in non-extreme outdoor conditions (below 100° F (38° C)). Mounted over the Haws model 7501.

FLOW CONTROLS

Pulling down the eyewash arm will begin flushing the 9-gallon (34.1 L) portable tank at .4 gpm (1.5 L) for a full 15 minutes, creating a full patterned flushing of the eyes.

DESIGN

Tank comes complete with a wide-fill opening and threaded cap for quick inspection, cleaning, and filling. Unit also comes equipped with top and side handles making relocation easy.

OPTIONS

- Waste Container: Model 9009 is a twenty-gallon (75.7 L) wastewater container constructed of tough yellow polymer resin. Unit is used to collect water during weekly testing of emergency equipment.
- HawsCLEAN™ Portable Eyewash Cleansing Stick: Model 9083, HawsCLEAN cleansing stick for gravity fed and pressurized portable eyewash equipment.
- Water Additive: Model 9082, bacteriostatic preservative for use in portable eyewash stations. One 8 oz. (236 ml) bottle will preserve 5 to 20 gallons (18.9 to 75.7 L) of potable water for up to four months. Four bottles per carton.

For more information, visit www.hawscos.com or call (888) 640-4297.



SPECIFICATIONS

Model 7501T is a 9-gallon (34 L), tempered, compact gravity-fed portable eyewash with a NEMA 3R heated, insulated blanket to provide ANSI compliant tempered potable water in ambient operating temperatures to -20° F (-30° C) and 100° F (38° C). Ideal for remote locations without access to continuous potable water. 120VAC, 60Hz, 1.38A electrical requirement with supplied 8' GFCI power cord. The unit includes a FDA approved high-density green polyethylene tank, ABS plastic eyewash heads with .4 gpm (1.5 L) flow rate over 15 minutes, yellow pull-down activation arm, integral handle with lift here graphics on top, clearly visible II line, wide- II threaded cap, sign-mounted operating instructions, and stainless steel wall bracket (unit must be hung). Model 9082 additive not included – order separately.

APPLICATIONS

Where the eyes of any person may be exposed to injurious or corrosive materials, when suitable facilities for quick flushing of the eyes needs to be provided and a continuous supply of water is not available. Although the 7501T may be installed in a wide variety of locations, it is ideal for remote areas where protective measures are still needed. Emergency eyewash equipment shall be in unobstructed and accessible locations that require no more than 10 seconds for the injured person to reach. QPS-C-US-Certified-Electrical-Safety for NEMA/Type 3R in ordinary locations, and to ANSI/ISEA Z358.1

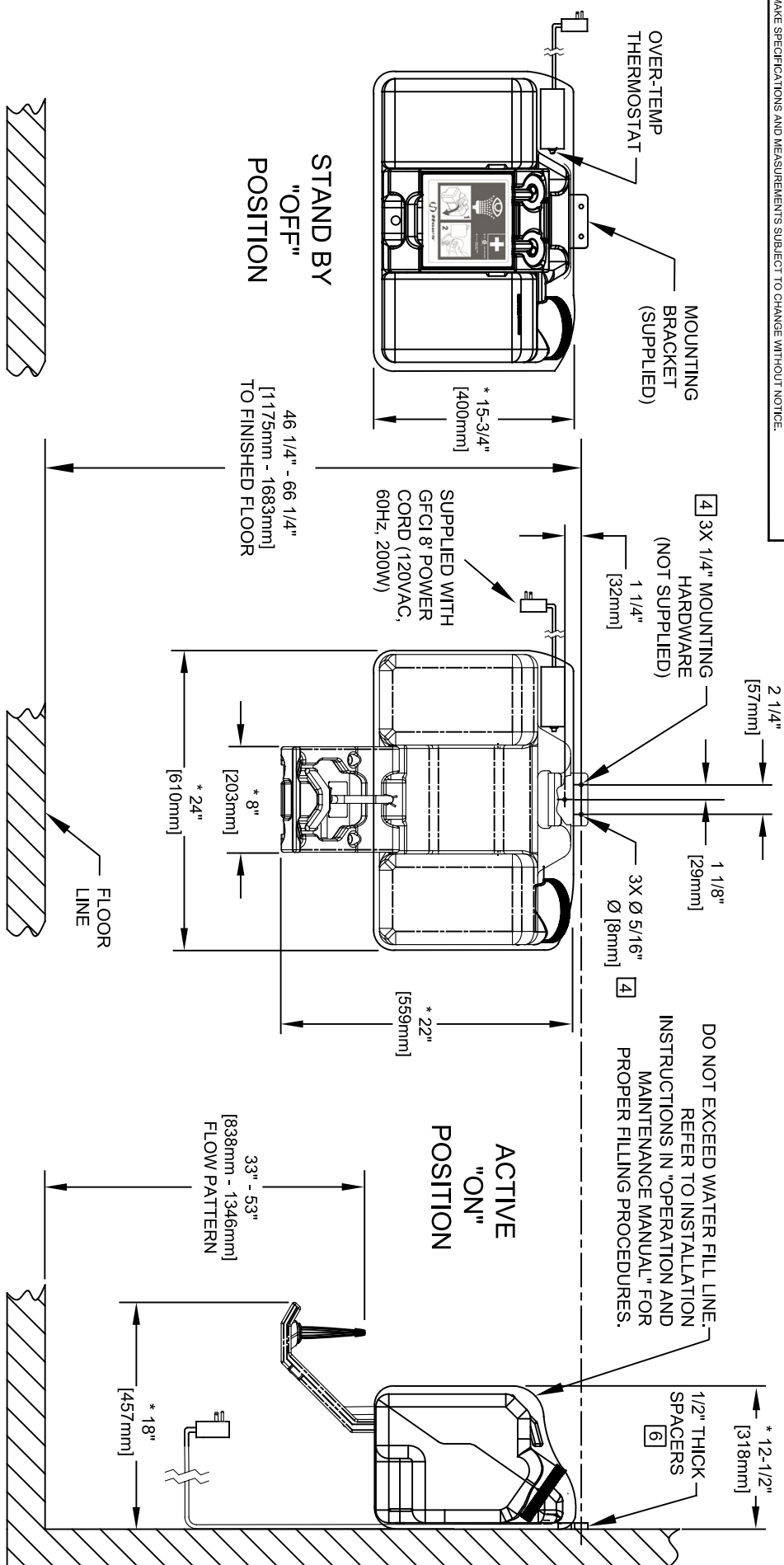




- # MODEL 7501

**How's®**

19
SHEET 1 0



MUST USE WITH NEMA/TYPE 3R
CERTIFIED COVERED OUTLET
(NOT SUPPLIED).

MODEL 7501T

FOR MODEL 7501, SEE SHEET 1 OF 2

FOR MODEL 7501, SEE SHEET 1 OF 2



1455 KLEPPE LANE
SPARKS, NEVADA 89431
(775) 359-4712 FAX (775) 359-7424
E-MAIL: HAWS@HAWSCO.COM
WEBSITE: WWW.HAWSCO.COM