

## FEATURES & BENEFITS

### YEAR-ROUND SERVICE

Reliable and fully engineered system allows the pneumatic valve to be installed below the frost line, and equipped with the ability to drain the water line after use to non-freezing depths so the unit can be used year round.

### SERVICEABILITY

Operation and maintenance ease is achieved through both the adjustable stream regulation and the ability of the valve assembly to be lifted to the surface and lowered back into the casing, so in the rare event that maintenance is required, can be done without having to disturb the fountain.

## OPTIONS

For more information, visit [www.hawscos.com](http://www.hawscos.com) or call (888) 640-4297.



## SPECIFICATIONS

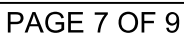
Model 6518FR freeze-resistant bury valve for use with single bubbler head pedestal fountains shall include a brass pneumatic operated valve installed below the frost line, check valve to drain water from unit when not in use and to prevent back-flow cross contamination, regulator valve to control stream height, separate valve access and pull-out design for easy maintenance, 6" (15.2 cm) diameter PVC pipe to encase valve assembly, and 1/2" NPT supply.

**(Consult with the local authority having jurisdiction before installation in order to determine if any additional regulations or requirements may apply)**

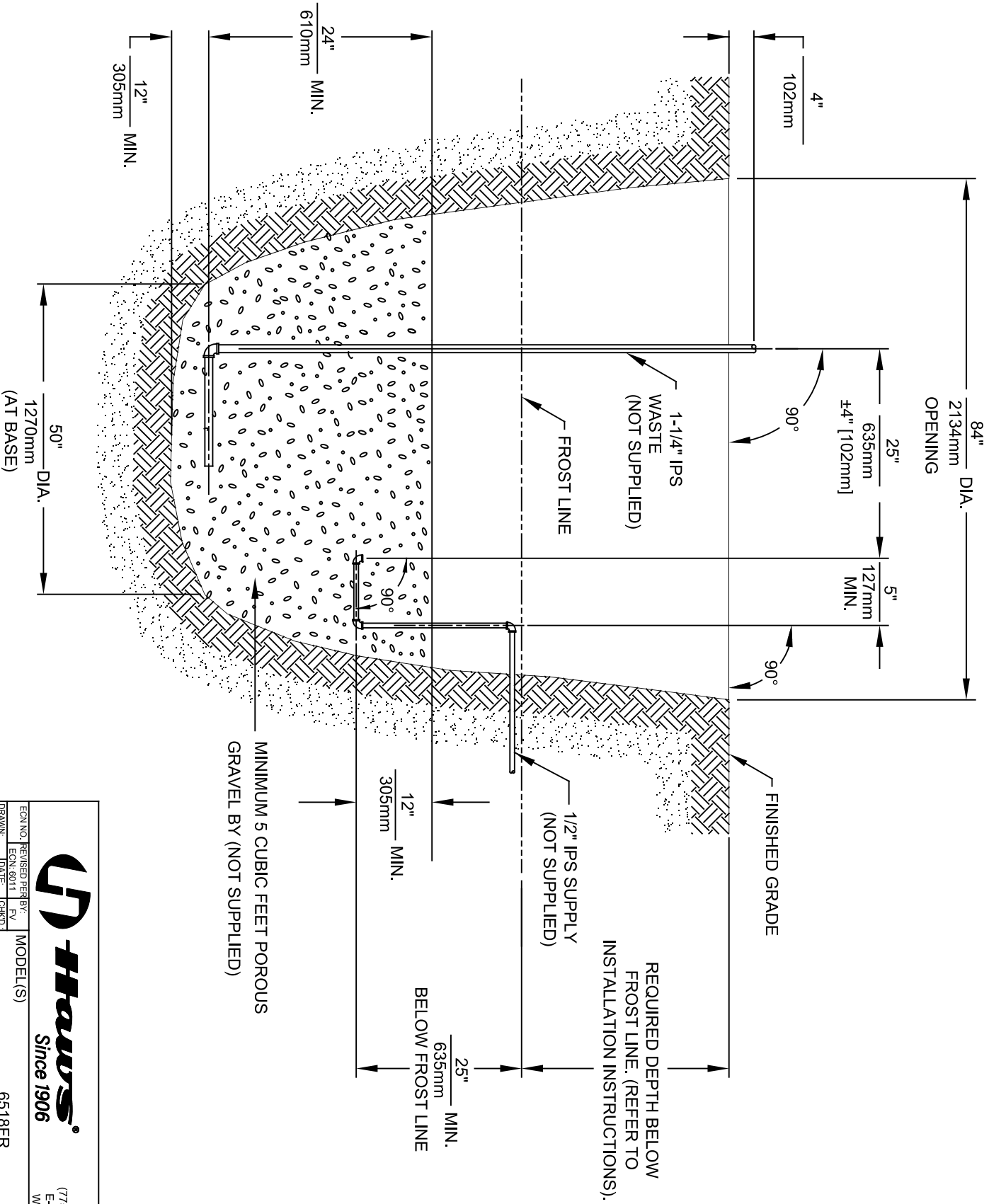
## APPLICATIONS


Freeze-resistant valve system is used in all Haws single bubbler, freeze-resistant, pedestal mounted fountains. Because this valve is installed below the frost line, it allows the fountain it is installed with to function year round in freezing conditions. Responsible for this non-freezing feat is a pneumatic operated valve that drains the water from the fountain to non-freezing depths. Haws manufactures drinking fountains, faucets and electric water coolers to be lead-free by all known definitions including NSF/ANSI/CAN 61- Section 9, NSF/ANSI/CAN 372, California Proposition 65, and the Federal Safe Drinking Water Act. Product is compliant to California Health and Safety Code 116875 (AB 1953-2006), and NSF/ANSI/CAN 61: Q ≤ 1.





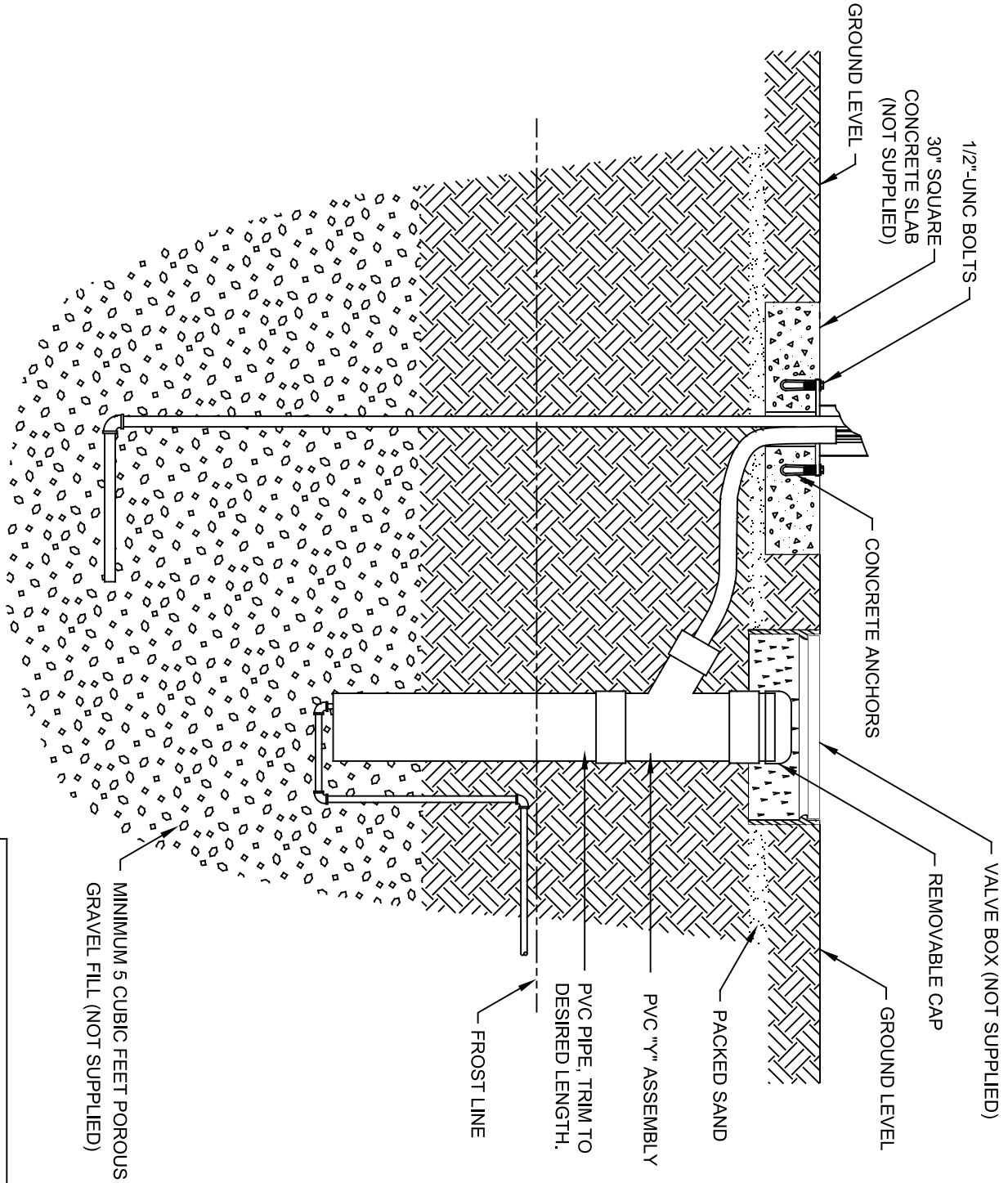
---




**Haws®**  
Since 1906

1456 KLEPPE LANE  
SPARKS, NEVADA, 89431  
(775) 359-4712 FAX (775) 359-7424  
E-MAIL: HAWS@HAWS.CO.COM  
WEBSITE: WWW.HAWS.CO.COM

ECN NO. REVISED PER BY:		MODEL(S)	
DRAWN:	DATE:	CHKD:	FV
TRF:	12/90	J.C.	
APPROVED:	DATE:	SCALE:	DRAWING TYPE:
FV	07/30/24	1/23	INSTALLATION
SIZE: A		SHEET 2 OF 3	
PART NUMBER		REVISION	
000207777.D		24	



**Haws®**  
Since 1906

ECN NO. REVISED PER BY: FV  
DRAWN: ECN 6011 FV  
TRF: 12/90 J.C.  
APPROVED: DATE: 01/30/24

MODEL(S)  
6518FR

SCALE: 1/2" = 1'-0" DRAWING TYPE: INSTALLATION

1456 KLEPPE LANE  
SPARKS, NEVADA 89431  
(775) 359-4712 FAX (775) 359-7424  
E-MAIL: HAWS@HAWS.CO.COM  
WEBSITE: WWW.HAWS.CO.COM

PART NUMBER  
0002077777.D  
REVISION  
24