

FEATURES & BENEFITS

CONSTRUCTION

Unit is made of 14 gauge Type 304 stainless steel with a satin finish that resists stains and corrosion, and has soft rounded corners. Unit features vandal-resistant bottom plate and dispensing nozzle.

EFFICIENT & FLEXIBLE INSTALLATION

Unit is designed for retrofit or new construction applications. No drain required for mounting over existing drinking fountain.

DURABLE BUILD

Good for outdoor applications where the unit may encounter freezing conditions. Made with 100% Stainless Steel for vandal resistance.

MOUNTING OPTIONS

Select from mounting plate and back panel models to complete installation. Unit can mount on various wall types.

VANDAL RESISTANT

The push button and bottom plate are locked in place, discouraging unwanted vandal tampering.



OPTIONS

- Mounting Plate: Model 6700, in-wall mounting plate for model 1920.
- Mounting Plate: Model 6700R, on-wall mounting plate for model 1920.
- Back Panel: Model BP15, satin finish stainless steel 15 inch back panel for Model 1920.
- Drain Basin: Model 6468 drip tray accessory catches unused bottle filler water.
- Back Panel: Model BP32, satin finish stainless steel 32" back panel for model 1920 bottle filler over a dual fountain.

For more information, visit www.hawsc.com or call (888) 640-4297.

SPECIFICATIONS

Model 1920FR vandal-resistant wall mounted freeze-resistant bottle filler can be a stand-alone wall mounted station, or mounted over the 1109FR & 1119FR series fountains. It shall include stainless steel construction, a polished chrome-plated brass push-button operated by a pneumatic valve installed on the inside wall where room temperatures do not drop below 50° F (10° C), and self-draining water lines which protect the unit from freezing.

This product requires a mounting plate; either the Haws model 6700 in-wall or the 6700R on-wall support plate.

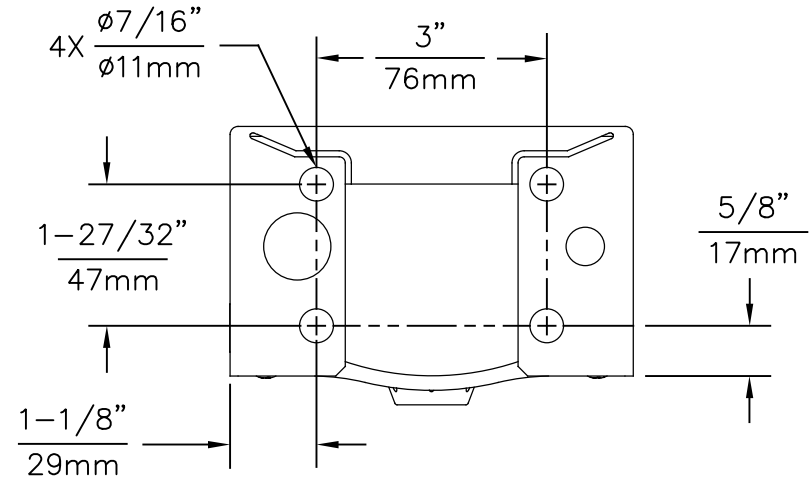
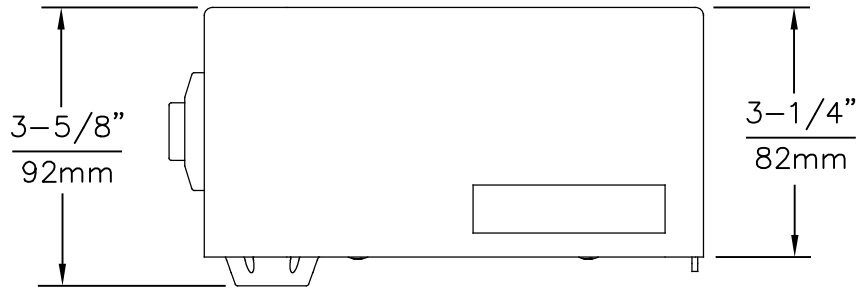
REQUIRES MODELS 1920FR & 6521FR ORDERED SEPARATELY

APPLICATIONS

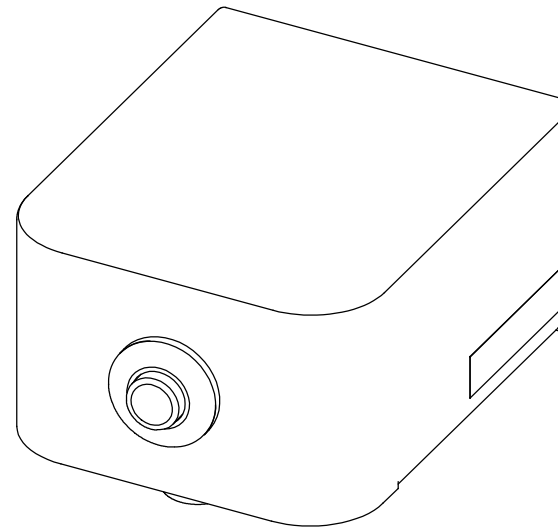
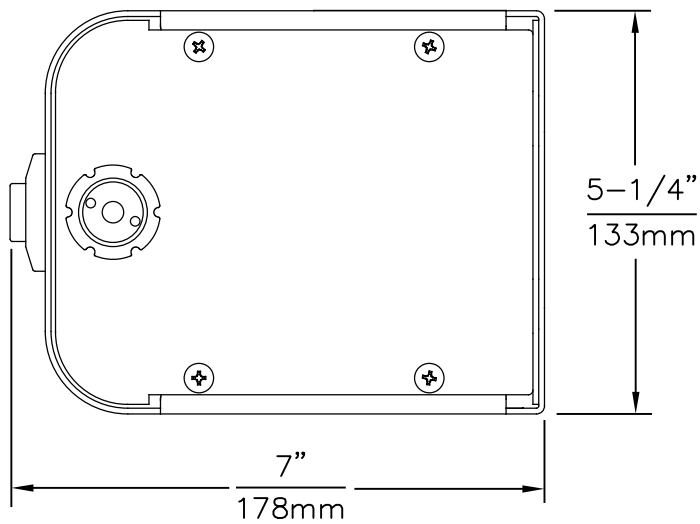
This type of wall mounted bottle filler may be placed in settings such as schools, parks and other outdoor locations where the freezing temperatures may exist. Haws manufactures drinking fountains, faucets and electric water coolers to be lead-free by all known definitions including NSF/ANSI/CAN 61-Section 9, NSF/ANSI/CAN 372, California Proposition 65, and the Federal Safe Drinking Water Act. Product is compliant to California Health and Safety Code 116875 (AB 1953-2006), and 116876 (AB 100) "NSF/ANSI/CAN 61: Q ≤ 1"



THIS DOCUMENT IS TRUE AND CORRECT AT TIME OF PUBLICATION. CONTINUED PRODUCT IMPROVEMENTS MAKE SPECIFICATIONS AND MEASUREMENTS SUBJECT TO CHANGE WITHOUT NOTICE.



1920FR MOUNTING HOLE LOCATIONS



NOTES:

- 1 THIS BOTTLE FILLER REQUIRES THE USE OF MODEL 6521FR FREEZE RESISTANT VALVE ASSEMBLY (SOLD SEPERATELY OR AS PART OF PRODUCT BUNDLES).
- 2 VALVE ASSEMBLY MUST BE INSTALLED IN A WARM AREA. PROVISIONS SHOULD BE MADE TO ALLOW ACCESS TO THE ACCESS PANEL.
3. SEE SEPERATE INSTALLATION DRAWINGS FOR MOUNTING PLATES, AND BACK PANELS (SHOWN FOR REFERENCE ONLY - NOT SUPPLIED).
4. WHEN INSTALLING THIS UNIT, LOCAL, STATE OR FEDERAL CODES SHOULD BE ADHERED TO FOR INSTALLATION LOCATIONS, WASTE & SUPPLY REQUIREMENTS OTHER THAN SHOWN.

		1455 KLEPPE LANE SPARKS, NEVADA 89431 (775) 359-4712 FAX (775) 359-7424 E-MAIL: HAWS@HAWS.CO.COM WEBSITE: WWW.HAWS.CO.COM	
		MODEL(S) 1920FR	PART NUMBER 051000491.D
ECN NO. 5081	REVISED PER ECN: 5893	BY: FV	DATE: 05/25/16
DRAWN: DS	CHKD: KM	APPROVED: FV	DATE: 09/06/23
SCALE: N/A		DRAWING TYPE: INSTALLATION	SIZE: A SHEET 1 OF 3

THIS DOCUMENT IS TRUE AND CORRECT AT TIME OF PUBLICATION. CONTINUED PRODUCT IMPROVEMENTS MAKE SPECIFICATIONS AND MEASUREMENTS SUBJECT TO CHANGE WITHOUT NOTICE.

NOTES:
SEE SHEET 1

3/8" OD POLYPROPYLENE TUBING
(CONNECT TO NOZZLE WITH
SUPPLIED PUSH-IN ELBOW,
TRIM TO FIT.

7/8" OD INSULATING TUBING (MUST COVER
ENTIRE SUPPLY TUBING, FROM THE
NOZZLE TO MODEL 6521FR ASSEMBLY)
TRIM TO FIT.

CONNECT AIR LINE TO BOTTLE
FILLER PUSH BUTTTON, TRIM TO FIT.

1/2" IPS SUPPLY
(NOT SUPPLIED)

1-1/4" IPS
WASTE (NOT
SUPPLIED)

6700 MOUNTING PLATE
(BEHIND FINISH WALL)
- OR -
6700R RETROFIT PLATE
(ON TOP OF FINISH WALL)
BOTH SOLD SEPARATELY

BP15
BACK PANEL
(NOT SUPPLIED)

6469
DRIP
TRAY
(NOT
SUPPLIED)

(47-5/8")
(1210mm)
BUTTON
HEIGHT
FOR ADA
COMPLIANCE

BP3
BACK PANEL
(NOT
SUPPLIED)

27"
686mm

DRINKING
FOUNTAIN
SHOWN FOR
REF. ONLY
(NOT SUPPLIED)

1 2
6521FR FREEZE RESISTANT
VALVE ASSEMBLY
(NOT SUPPLIED)
FOR DRINKING FOUNTAIN

(7")
(178mm)

(4")
(102mm) DEPTH
OF BOX

6521FR FREEZE RESISTANT
VALVE ASSEMBLY 1 2
(NOT SUPPLIED)
FOR BOTTLE FILLER

6521 VALVE ASSEMBLY
ACCESS PANEL 2

34-1/2"
876mm

17-1/4"
438mm

37-1/2"
952mm

39-1/2"
1003mm

INSTALLATION SHOWN ABOVE HAWS MODEL 1109FR

1. SEE SEPARATE INSTALLATION DRAWINGS
FOR MOUNTING PLATES AND BACK PANELS
(SHOWN FOR REFERENCE - NOT SUPPLIED).

2. WHEN INSTALLING THIS UNIT, LOCAL,
STATE OR FEDERAL CODES SHOULD
BE ADHERED TO FOR INSTALLATION
LOCATIONS, WASTE & SUPPLY
REQUIREMENTS OTHER THAN SHOWN.

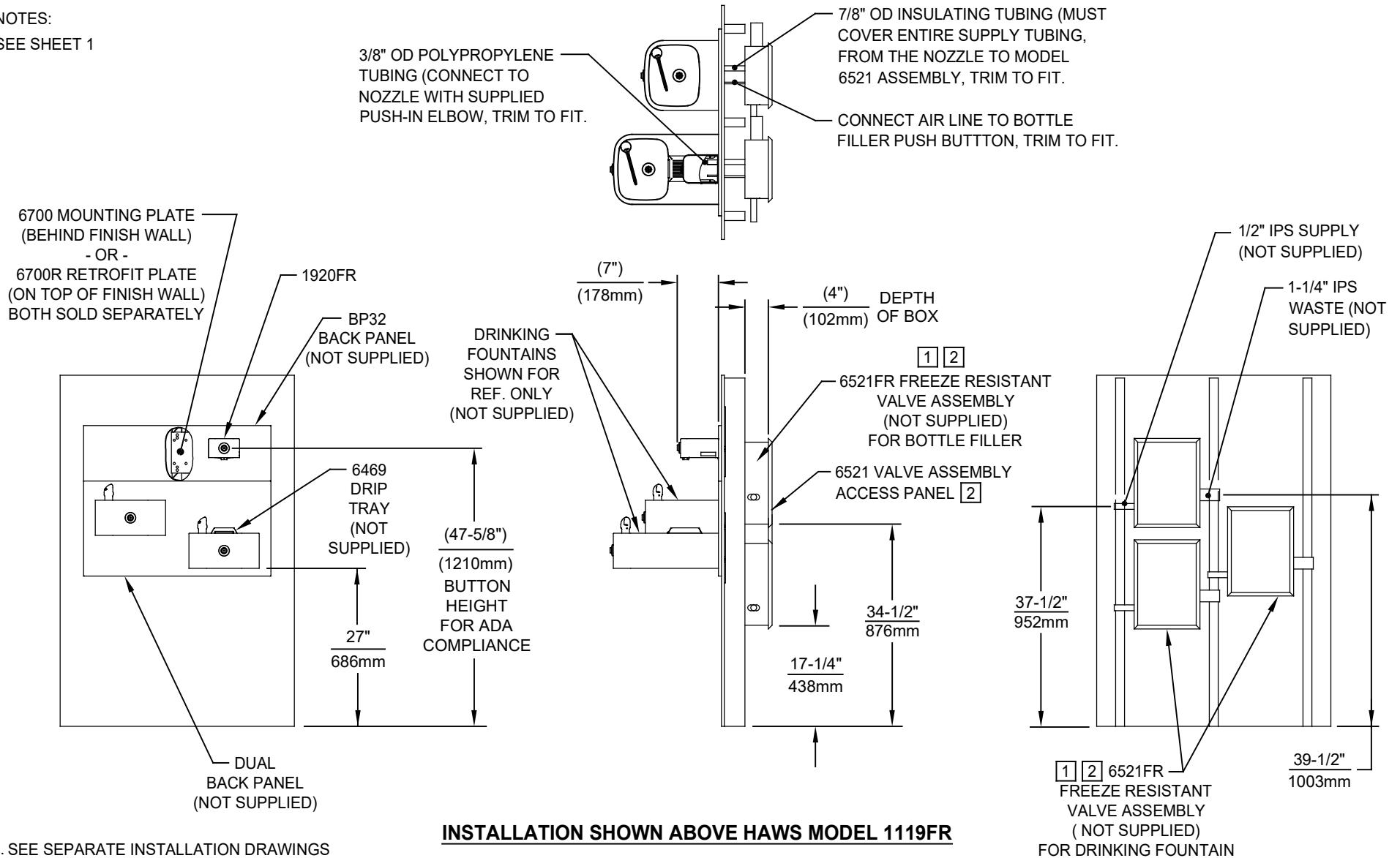


1455 KLEPPE LANE
SPARKS, NEVADA 89431
(775) 359-4712 FAX (775) 359-7424
E-MAIL: HAWS@HAWS.CO.COM
WEBSITE: WWW.HAWS.CO.COM

ECN NO. 5081	REVISED PER ECN: 5893	BY: FV	MODEL(S)	PART NUMBER
DRAWN: MJ	DATE: 02/13/17	CHK'D: KM	1920FR	051000491.D
APPROVED: FV	DATE: 09/06/23	SCALE: N/A	DRAWING TYPE: INSTALLATION	REVISION 7
			SIZE: A	SHEET 2 OF 3

THIS DOCUMENT IS TRUE AND CORRECT AT TIME OF PUBLICATION. CONTINUED PRODUCT IMPROVEMENTS MAKE SPECIFICATIONS AND MEASUREMENTS SUBJECT TO CHANGE WITHOUT NOTICE.

NOTES:
SEE SHEET 1



1. SEE SEPARATE INSTALLATION DRAWINGS FOR MOUNTING PLATES AND BACK PANELS (SHOWN FOR REFERENCE - NOT SUPPLIED).

2. WHEN INSTALLING THIS UNIT, LOCAL, STATE OR FEDERAL CODES SHOULD BE ADHERED TO FOR INSTALLATION LOCATIONS, WASTE & SUPPLY REQUIREMENTS OTHER THAN SHOWN.

		1455 KLEPPE LANE SPARKS, NEVADA 89431 (775) 359-4712 FAX (775) 359-7424 E-MAIL: HAWS@HAWS.CO.COM WEBSITE: WWW.HAWS.CO.COM	
		ECN NO: 5081 DRAWN: MJ APPROVED: FV	REVISED PER: ECN: 5893 DATE: 02/13/17 DATE: 09/06/23
PART NUMBER 0510000491.D			REVISION 7
SCALE: N/A		DRAWING TYPE: INSTALLATION	SIZE: A SHEET 3 OF 3