



INSTALLATION, OPERATION & MAINTENANCE INSTRUCTIONS

1455 Kleppe Lane ♦ Sparks, NV 89431-6467 ♦ (775) 359-4712 ♦ Fax (775) 359-7424
E-mail: haws@hawsco.com ♦ website: www.hawsco.com

No. 0002074001 (18)

Model 3511 Drinking Fountain

NOTE TO INSTALLER: Please leave this information with the Maintenance Department.

LIMITED WARRANTY

HAWS warrants that this specific product is guaranteed against defective material or poor workmanship for a period of **one year from date of shipment**. HAWS liability under this warranty shall be discharged by furnishing without charge F.O.B. HAWS Factory any goods, or part thereof, which shall appear to the Company upon inspection to be of defective material or not of first class workmanship, provided that claim is made in writing to Haws within a reasonable period after receipt of the product. Where claims for defects are made, the defective part or parts shall be delivered to the Company, prepaid, for inspection. HAWS will not be liable for the cost of repairs, alterations or replacements, or for any expense connected therewith made by the owner or his agents, except upon written authority from HAWS, Sparks, Nevada. HAWS will not be liable for any damages caused by defective materials or poor workmanship, except for replacements, as provided above. Buyer agrees that HAWS shall not be liable for general, special, or consequential damages claimed to arise under the contract of sale. The drinking fountain manufactured by HAWS is warranted to function if installation and maintenance instructions provided are adhered to. The units also must be used for the purpose for which they were intended.

NO OTHER WARRANTIES EXPRESSED OR IMPLIED ARE AUTHORIZED, PROVIDED OR GIVEN BY HAWS.

SHOULD YOU EXPERIENCE DIFFICULTY WITH THE INSTALLATION OF THIS MODEL PLEASE CALL:

TECHNICAL SUPPORT: 1-800-766-5612

FOR CUSTOMER SERVICE: 1-888-640-4297

RECOMMENDED TOOLS: Hack saw, pipe joint sealant, screwdriver, level, 12" adjustable wrench, 10" pipe wrench, 9/16", 1/2", 7/16" socket wrench or open-end wrench, 5/32" hex key wrench.

LOCATION OF UNIT: The Model 3511 Drinking Fountain is a wheelchair accessible drinking water facility. The height dimensions shown, meet current ADA requirements. When installing this unit, local, state or federal codes should be adhered to. If height other than shown is required, then dimensions must be adjusted accordingly.

SUPPLY LINE: The minimum recommended line size is 1/2" IPS with 30-90 psi (2-6 ATM) flowing pressure. Where sediment or mineral content is a problem, an inlet filter is recommended.

PLUMBING CONNECTIONS: Inlet is 3/8" O.D. compression fitting. Waste outlet is 1-1/2" O.D. tailpiece.

MAINTENANCE: Periodically clean the strainer. Refer to 5874 Series Valve Manual for more information.

TROUBLESHOOTING

PROBLEM	REPAIR CHECKLIST
1. Insufficient bubbler flow.	1a. Check that inlet screwdriver stop valve is in wide-open position. b. Verify minimum 30 psi flowing supply pressure. c. Clean strainer. See 5874 Series Valve Manual. d. Adjust valve to increase flow. Use front adjust screw or see 5874 Series Valve Manual. e. Clean screens (inside nozzle body). Unscrew nozzle insert and very gently activate water supply to pop out qty. 3 screens (be careful not to lose screens). Remove any debris clogging the screen openings and place back into nozzle body. Reassemble nozzle insert.

General Notes:

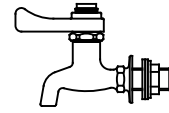
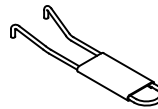
Before tightening nut and ferrule assembly, push tubing into fitting until it bottoms out to ensure correct engagement with O-Ring.

For more information about Haws products, see our website: www.hawesco.com

NOTES:

- 1 5874PB INCLUDES VRK5874 CARTRIDGE ASSEMBLY AND PBA7 RECESSED PUSH BUTTON.
- 2 ENSURE TUBE IS DISCONNECTED FROM PUSH BUTTON VALVE BODY PRIOR TO REMOVAL. APPLY ONE DROP OF LOCTITE 222MS TO NOZZLE THREADS PRIOR TO FASTENING BACK ONTO BUBBLER HEAD. RE-ATTACH TUBE TO VALVE.
- 3 **IMPORTANT:** IF HOSE BIB IS USED ALONG WITH A SAND TRAP, IT MUST BE USED WITH SAND TRAP 6611. CANNOT OFFER HOSE BIB AS OPTION WITH SAND TRAP 6635. IF HOSE BIB IS PURCHASED, ACCESS PLATE, 0004521763, MUST BE USED.

SPANNER WRENCH
0006983506



MODEL 6250LF BIB FAUCET
(OPTIONAL)

3

5705
BUBBLER HEAD

STRAINER
0005624292

1 PBA7 PUSH
BUTTON ASSY

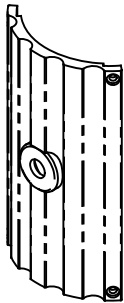
1 VRK5874 VALVE
REPAIR KIT

5874PB VALVE 1

ACCESS PLATE
0004521763
(OPTIONAL)

MUST BE USED WITH 6250LF

6635
SAND TRAP
W/MOUNTING PLATE
(OPTIONAL)



0002082253
(OPTIONAL)
FOR REMOVAL
OF NOZZLE
WITH TUBE

5705LAMIN
(OBSOLETE -
SHOWN FOR
REFERENCE
ONLY.)

STYLE A
(TUBING CONNECTS
TO ELBOW)

STYLE B
(TUBING CONNECTS TO
INSERT ASSY)

PARTS BREAKDOWN

FOUNTAIN COULD HAVE EITHER STYLE

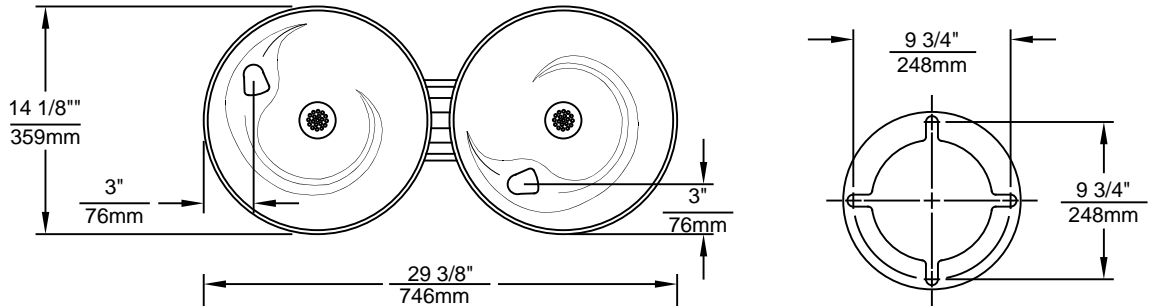
DETAIL A
ROTATED 90° INTO VIEW

WHEN ORDERING PARTS PLEASE SPECIFY MODEL NUMBER.

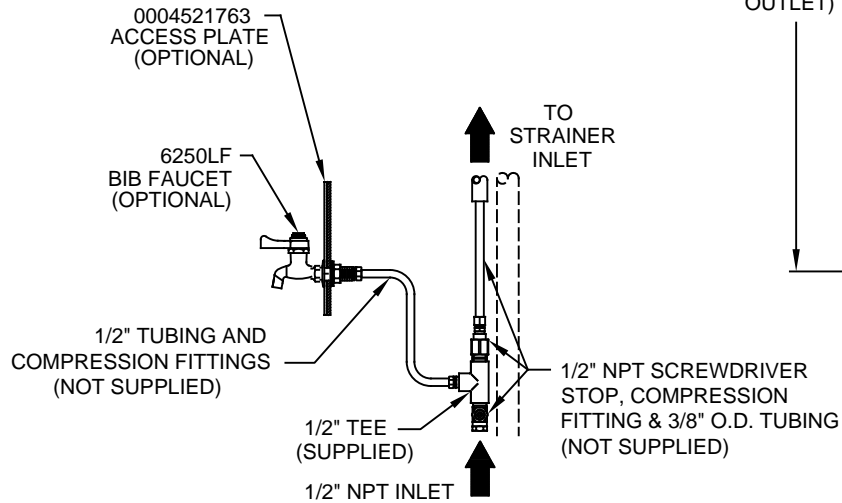
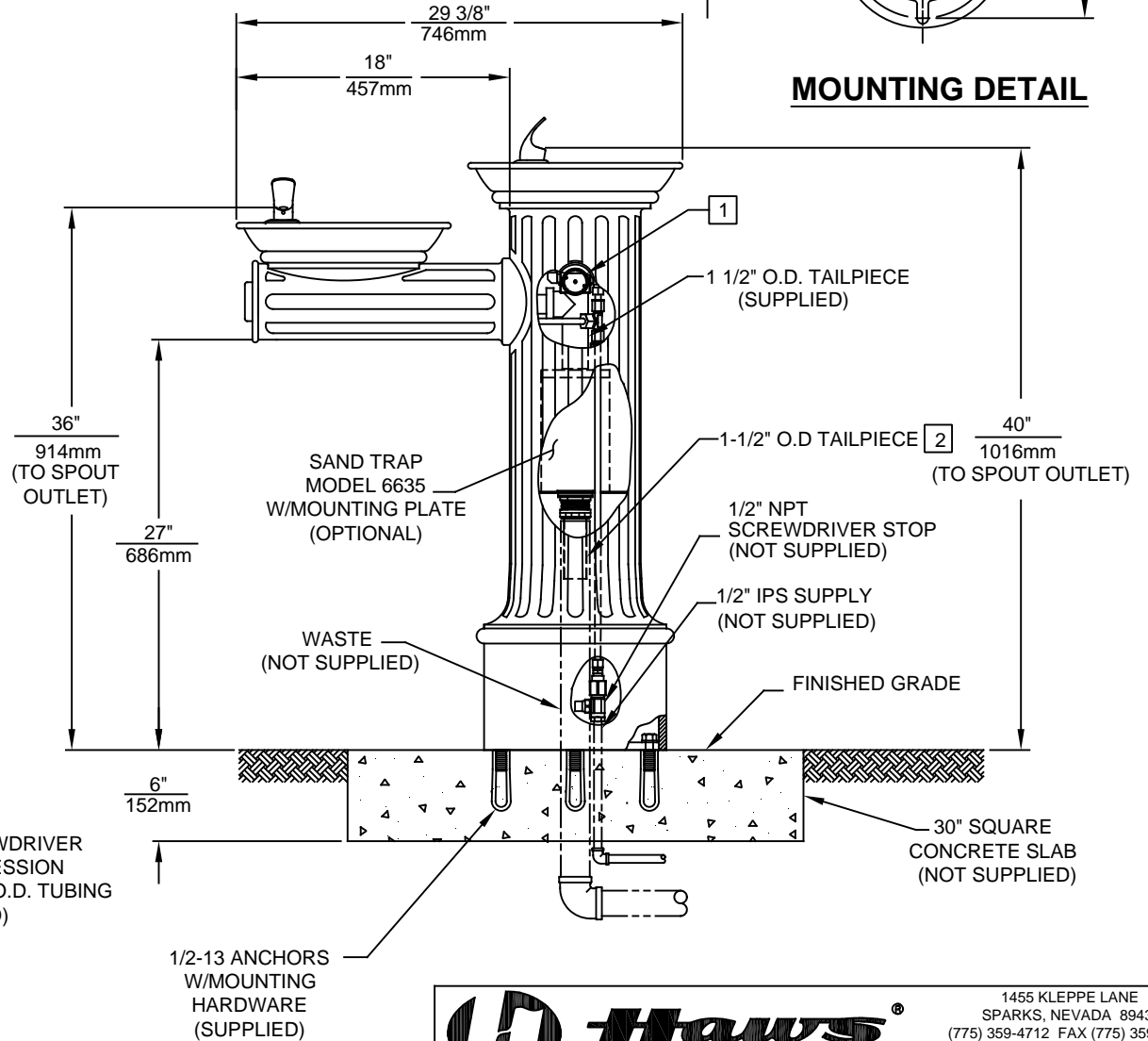
		1455 KLEPPE LANE SPARKS, NEVADA 89431 (775) 359-4712 FAX (775) 359-7424 E-MAIL: HAWS@HAWS.CO.COM WEBSITE: WWW.HAWS.CO.COM	
ECN NO.	REVISED PER	BY	MODEL(S)
	ECN: 5438	FV	3511
DRAWN	DATE	CHKD	PART NUMBER
P.M.	05-03-00	DP	0002074001
APPROVED	DATE		REVISION
IR	12/09/19		18
SCALE: 1:4		DRAWING TYPE: PARTS BREAKDOWN	SIZE: A SHEET 1 OF 1

NOTES:


1. REFER TO 5874 SERIES OPERATION AND MAINTENANCE MANUAL FOR PUSH BUTTON AND VALVE INSTALLATION/MAINTENANCE INSTRUCTIONS.
2. OPTIONAL SAND TRAP MODEL 6635 W/ MOUNTING PLATE AND 1-1/2" O.D. TAILPIECE. SEE MODEL 6635 FOR ADDITIONAL INSTALLATION INSTRUCTIONS.



MOUNTING DETAIL



BIB FAUCET DETAIL



1455 KLEPPE LANE
SPARKS, NEVADA 89431
(775) 359-4712 FAX (775) 359-7424
E-MAIL: HAWS@HAWSCO.COM
WEBSITE: WWW.HAWSCO.COM

ECN NO. REVISED PER BY:	MODEL(S)	PART NUMBER
ECN: 5438 FV	3511	0002074001.D
DRAWN: DATE: CHKD.:		REVISION
P.M. 05-30-00 DP		18
APPROVED: DATE:	SCALE: 1:8	DRAWING TYPE: INSTALLATION
IR 12/09/19		SIZE: A SHEET 1 OF 1