



# INSTALLATION, OPERATION & MAINTENANCE INSTRUCTIONS

1455 Kleppe Lane ♦ Sparks, NV 89431-6467 ♦ (775) 359-4712 ♦ Fax (775) 359-7424  
E-mail: [haws@hawsco.com](mailto:haws@hawsco.com) ♦ website: [www.hawsco.com](http://www.hawsco.com)

No. 0510000494(1)

## Model 3377BF/3377BFG Drinking Fountain

**NOTE TO INSTALLER:** Please leave this information with the Maintenance Department.

### LIMITED WARRANTY

HAWS warrants that this specific product is guaranteed against defective material or poor workmanship for a period of **one year from date of shipment**. HAWS liability under this warranty shall be discharged by furnishing without charge F.O.B. HAWS Factory any goods, or part thereof, which shall appear to the Company upon inspection to be of defective material or not of first class workmanship, provided that claim is made in writing to Haws within a reasonable period after receipt of the product. Where claims for defects are made, the defective part or parts shall be delivered to the Company, prepaid, for inspection. HAWS will not be liable for the cost of repairs, alterations or replacements, or for any expense connected therewith made by the owner or his agents, except upon written authority from HAWS, Sparks, Nevada. HAWS will not be liable for any damages caused by defective materials or poor workmanship, except for replacements, as provided above. Buyer agrees that HAWS shall not be liable for general, special, or consequential damages claimed to arise under the contract of sale. The drinking fountain manufactured by HAWS is warranted to function if installation and maintenance instructions provided are adhered to. The units also must be used for the purpose for which they were intended.

**NO OTHER WARRANTIES EXPRESSED OR IMPLIED ARE AUTHORIZED,  
PROVIDED OR GIVEN BY HAWS.**

**SHOULD YOU EXPERIENCE DIFFICULTY WITH THE INSTALLATION OF THIS  
MODEL PLEASE CALL:**

**TECHNICAL SUPPORT: 1-800-766-5612**

**FOR CUSTOMER SERVICE: 1-888-640-4297**

**REQUIRED TOOLS:** Tubing cutter, 3/32" and 5/32" hex key set, ball-end hex wrench.

**LOCATION OF UNIT:** The Model 3377BF/3377BFG bottle filler is an accessory that mounts on top of a standard 3377 outdoor drinking fountain. When installing this unit, local, state or federal codes should be adhered to.

**SUPPLY LINE:** The minimum recommended line size is 3/8" OD copper or plastic tubing with 30-90 psi (2-6 ATM) pressure. Where sediment or mineral content is a problem, an inlet filter is recommended.

**PLUMBING CONNECTIONS:** Inlet is 3/8" O.D. push-in type fitting.

**MAINTENANCE:** Periodically clean the strainer. Refer to 5874HF Valve Manual for more information.

## INSTALLATION PROCEDURE

### GENERAL NOTES:

1. For all plastic push-in type fitting connections, only connect NSF-61 copper or plastic tubing. Stainless steel or glass tubing is not recommended. The following assembly instructions must be followed to ensure a watertight connection:
  - a. Cut tubing square and clean.
  - b. Mark from end of tube the length of insertion (See table below).
  - c. Push tube into the fitting until it bottoms out.
  - d. To remove, depress collet and pull tubing out.

Tube Sizes	O.D. Tolerance	Insertion Depth
1/4"	±.005"	11/16"
3/8"	±.005"	3/4"
1/2"	±.005"	7/8"

### PEDESTAL EXTENSION:

Remove the access plate on the 3377 drinking fountain. Save the plate and screws as they will be re-used. Cut and splice the water supply line per the instructions on Page 5. Feed the supply line extension through the center hole before attaching the bracket extension. Bolt the bracket extension to the fountain using the supplied flat-head screws and a 5/32 ball-end hex (Allen) wrench.

### BOTTLER FILLER BRACKET:

Install the 1920 to bracket extension using the provided instructions. Connect the water supply line to the push button valve and install the bottom cover. Replace the access plate on top of the pedestal extension.

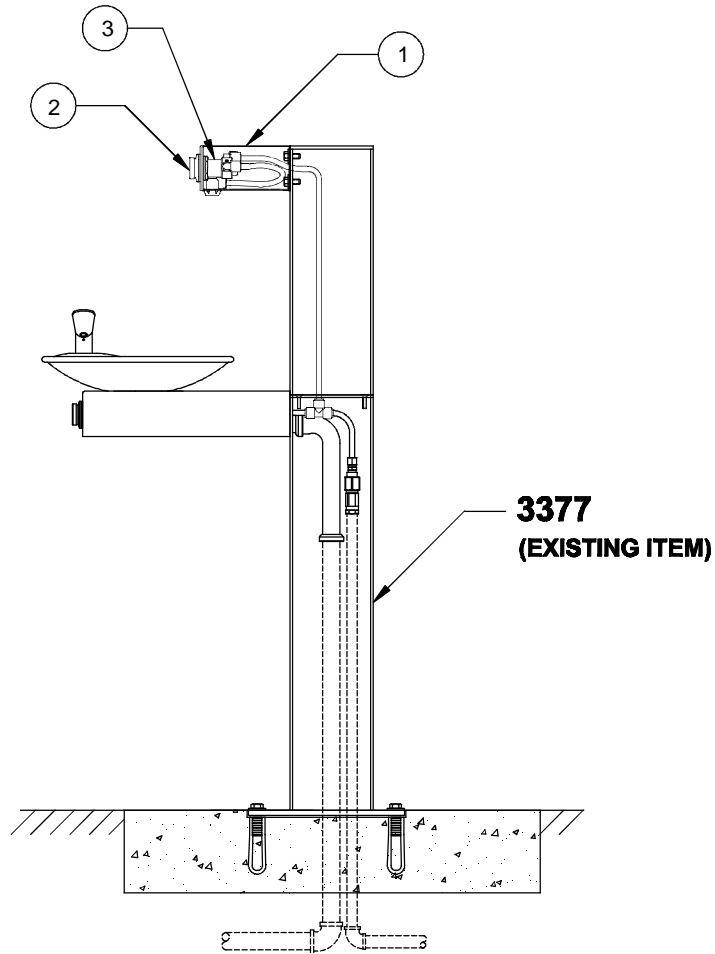
## TROUBLESHOOTING 3377BF


PROBLEM	REPAIR CHECKLIST
Insufficient water flow.	<ol style="list-style-type: none"><li>1a. Check that inlet screwdriver stop valve is wide open (customer supplied). Turn counterclockwise.</li><li>b. Verify minimum 30 psi flowing supply pressure.</li><li>c. Clean screens (inside nozzle body). Unscrew nozzle insert and very gently activate water supply to pop out qty. 3 screens (be careful not to lose screens). Remove any debris clogging the screen openings and place back into nozzle body. Reassemble nozzle insert.</li></ol>

For more information about Haws products, see our website: [www.hawsc.com](http://www.hawsc.com)

ITEM	DESCRIPTION	PART NO.
1	BOTTLE FILLER ASSY	1920
2	PUSH BUTTON ASSY	PBA6
3	VALVE	5874HF

# PARTS BREAKDOWN

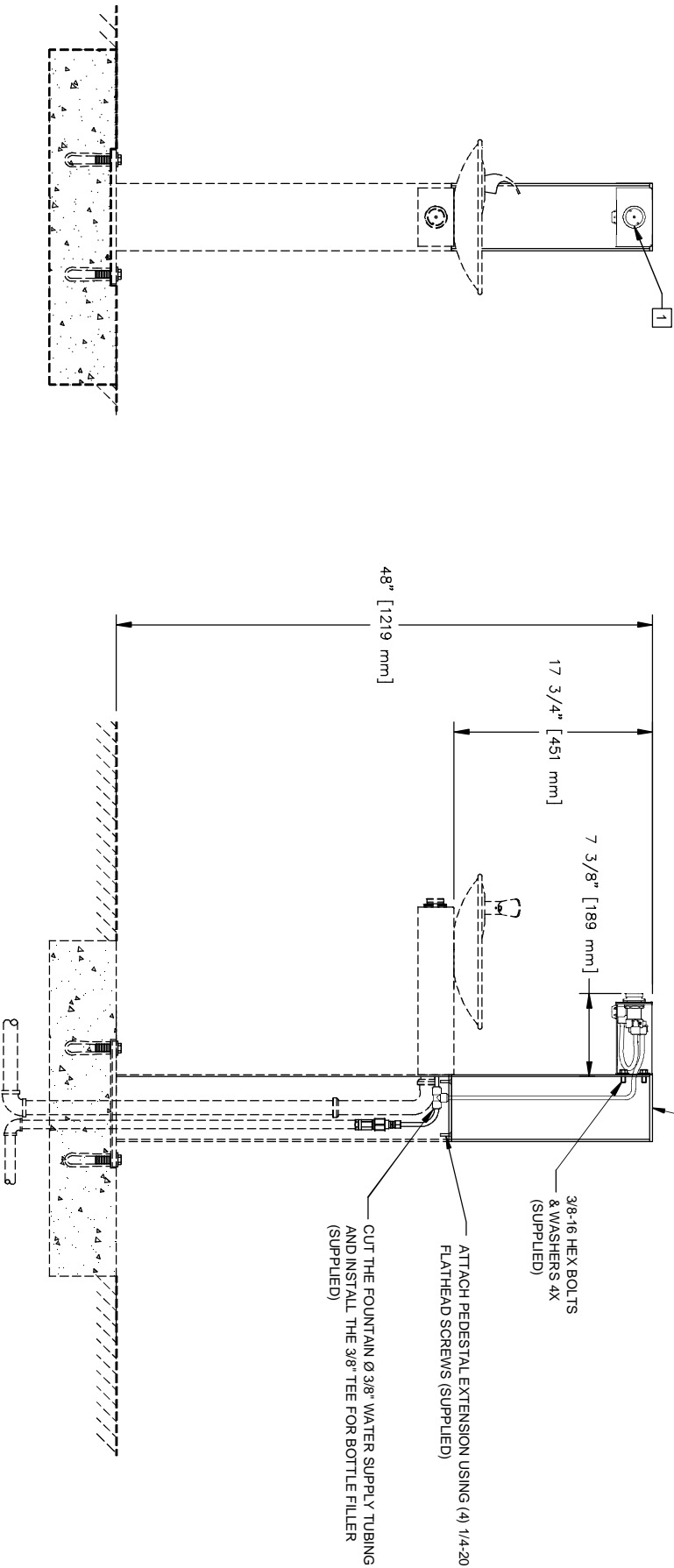
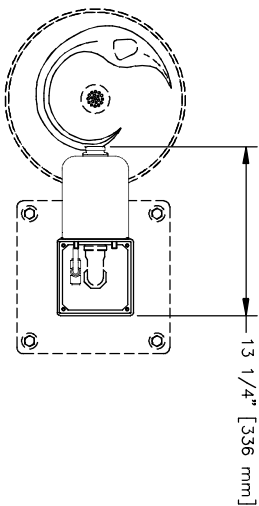


 <b>Haws</b> <sup>®</sup>		1455 KLEPPE LANE SPARKS, NEVADA 89431 (775) 359-4712 FAX (775) 359-7424 E-MAIL: HAWS@HAWS.CO.COM WEBSITE: WWW.HAWS.CO.COM	
		ECN NO. 5081 REVISED PER MJ DATE 06/08/16 CHKD RVH	MODEL(S) 3377BF/3377BFG
APPROVED JL DATE 06/22/16		SCALE: 1:14 DRAWING TYPE: PARTS BREAKDOWN	REVISION 1

WHEN ORDERING PARTS PLEASE SPECIFY MODEL NUMBER.

**INSTALLATION INSTRUCTIONS:**

- 1) VERIFY THAT THE WATER SUPPLY IS SHUT OFF TO THE FOUNTAIN.
- 2) REMOVE THE ACCESS PLATE FROM THE EXISTING 3377 PEDESTAL. CUT THE EXISTING 3/8" PLASTIC WATER SUPPLY LINE AND INSTALL THE 3/8" TEE WITH THE 24" TUBE EXTENSION COMING OUT THE TOP.
- 3) FEED THE WATER SUPPLY TUBE THROUGH HOLE IN THE BOTTOM PLATE OF THE PEDESTAL EXTENSION. BOLT THE PEDESTAL EXTENSION ONTO THE 3377 FOUNTAIN USING THE (4) 1/4-20 FLATHEAD BOLTS PROVIDED.
- 4) INSTALL THE BOTTLE FILLER BRACKET ONTO THE PEDESTAL USING THE (4) 3/8-16 HEX BOLTS PROVIDED. CONNECT THE SUPPLY LINE TUBE TO THE PUSH BUTTON VALVE.
- 5) RE-INSTALL THE ACCESS PLATE ON TOP THE PEDESTAL EXTENSION.



**NOTES:**

- 1 REFER TO 5874HF OPERATION AND MAINTENANCE MANUAL FOR PUSH BUTTON AND VALVE INSTALLATION/MAINTENANCE INSTRUCTIONS.

		<b>MODEL(S)</b>	
3377BF/3377BFG		PART NUMBER	
0510000494.D		REVISION	
1		1	
1459 KLEPPE LANE SPARKS, NEVADA 89431 (775) 359-4712 FAX (775) 359-7424 E-MAIL: HAWS@HAWS.CO.COM WEBSITE: WWW.HAWS.CO.COM		SCALE: 11/8 DRAWING TYPE: INSTALLATION	
ECON NO. REVISED PER BY: MODEL(S)		SCALE: 11/8 DRAWING TYPE: INSTALLATION	
DRAWN: DATE: RAYH		SIZE: A SHEET 1 OF 1	
CHECKED: DATE: RAYH		1	
APPROVED: DATE: RAYH			
Dwg No. 06/02/16			