



INSTALLATION, OPERATION & MAINTENANCE INSTRUCTIONS

1455 Kleppe Lane ♦ Sparks, NV 89431-6467 ♦ (775) 359-4712 ♦ Fax (775) 359-7424
E-mail: haws@hawsco.com ♦ website: www.hawsco.com

No. 0002076860 (18)

Model 1435 Drinking Fountain

NOTE TO INSTALLER: Please leave this information with the Maintenance Department.

LIMITED WARRANTY

HAWS warrants that all of its products are guaranteed against defective material or poor workmanship for a period of **one year from the date of shipment**. The foregoing notwithstanding, *HAWS* warrants certain specific products or components thereof for an adjusted period. A list of these excepted products and components and a description of their respective warranty terms may be found here: www.hawsco.com/warranty. *HAWS'* liability under this warranty shall be discharged by furnishing without charge F.O.B. *HAWS* factory any goods, or part thereof, which shall appear to the Company upon inspection to be of defective material or not of first-class workmanship, provided that a claim is made in writing to Company within a reasonable period after receipt of the product. Where claims for defects are made, the defective part or parts shall be delivered to the Company, prepaid, for inspection. *HAWS* shall not be liable for the cost of repairs, alterations or replacements, or the labor required to implement them, or for any expense connected therewith made by the owner or owner's agents, except upon written authority from *HAWS*. *HAWS* shall not be liable for any damages caused by defective materials or poor workmanship, except for replacements, as provided above. Buyer agrees that *HAWS* has made no other warranties either express or implied in addition to those above stated, except that of title with respect to any of the products or equipment sold hereunder and that *HAWS* shall not be liable for general, special, incidental, or consequential damages claimed to arise under the contract of sale.

Equipment manufactured by *HAWS* is warranted to function if installation and maintenance instructions provided are adhered to. The units also must be used for the purpose for which they were intended. Any *HAWS* emergency equipment is intended to supplement first-aid treatment. Due to widely varying conditions, *HAWS* cannot guarantee that the use of this emergency equipment will prevent serious injury or the aggravation of existing or prior injuries.

EXCEPT AS EXPRESSLY STATED HEREIN, HAWS HEREBY DISCLAIMS ALL WARRANTIES, WHETHER EXPRESS OR IMPLIED, ARISING BY LAW OR OTHERWISE, INCLUDING WITHOUT LIMITATION, ANY IMPLIED WARRANTIES OF MERCHANTABILITY AND FITNESS FOR A PARTICULAR PURPOSE. THIS WARRANTY MAY NOT BE MODIFIED OR EXTENDED WITHOUT THE WRITTEN CONSENT OF HAWS. REMEDIES AND REPLACEMENTS STATED HEREIN ARE EXCLUSIVE. IN NO EVENT SHALL HAWS BE LIABLE FOR ANY SPECIAL, PUNITIVE, CONSEQUENTIAL OR INCIDENTAL DAMAGES TO ANY PERSON INCLUDING BUT NOT LIMITED TO DAMAGES FOR LOSS OF USE OR PROFITS, SUBSTITUTE PRODUCTS OR COSTS, PROPERTY DAMAGE, OR OTHER MONETARY LOSS.

SHOULD YOU EXPERIENCE DIFFICULTY WITH THE INSTALLATION OF THIS MODEL PLEASE CALL:

TECHNICAL SUPPORT: 1-800-766-5612
FOR CUSTOMER SERVICE: 1-888-640-4297

RECOMMENDED TOOLS: Hack saw, pipe joint sealant, screwdriver, level, 12" adjustable wrench, 10" pipe wrench, 5/64" and 5/32" hex key wrench, 9/16", 1/2", 7/16" socket wrench or open-end wrench.

LOCATION OF UNIT: When installing this unit, local, state or federal codes should be adhered to. (If height other than shown is required, then dimensions must be adjusted accordingly).

SUPPLY LINE: The minimum recommended line size is 1/2" IPS with 30-90 PSI (2-6 ATM) flowing pressure. Where sediment or mineral content is a problem, an inlet filter is recommended.

PLUMBING CONNECTIONS: Inlet is 3/8" O.D. tube fitting. Waste outlet is female 1-1/2" IPS.

MAINTENANCE: Periodically clean the strainer. Refer to 5874 Series Valve Manual for more information.

INSTALLATION PROCEDURE

GENERAL NOTES:

1. For all plastic push-in type fitting connections, only connect NSF-61 copper or plastic tubing. Stainless steel or glass tubing is not recommended. The following assembly instructions must be followed to ensure a watertight connection:
 - a. Cut tubing square and clean.
 - b. Mark from end of tube the length of insertion (See table below).
 - c. Push tube into the fitting until it bottoms out.
 - d. To remove, depress collet and pull tubing out.

Tube Sizes	O.D. Tolerance	Insertion Depth
1/4"	±.005"	11/16"
3/8"	±.005"	3/4"
1/2"	±.005"	7/8"

Refer to Installation drawing for mounting. For assembly steps below refer to exploded view in Parts Breakdown drawing.

STEP 1: Remove nut and washers from bubbler heads. Install bubbler heads through receptor. Install, respectively, rubber washer, fiber washer and nut onto bubbler shank. Securely tighten nut.

STEP 2: Remove pushbutton assembly from valve with spanner wrench provided. Be sure to also remove (chrome plated) ring nut and (chrome plated) washer from valve. At this point, carefully follow installation instructions shown on **5874 Series Valve/Push Button Operation and Maintenance Manual** under heading: **"INSTALLATION INSTRUCTIONS FOR 5874PB"**

INSTALLATION PROCEDURE

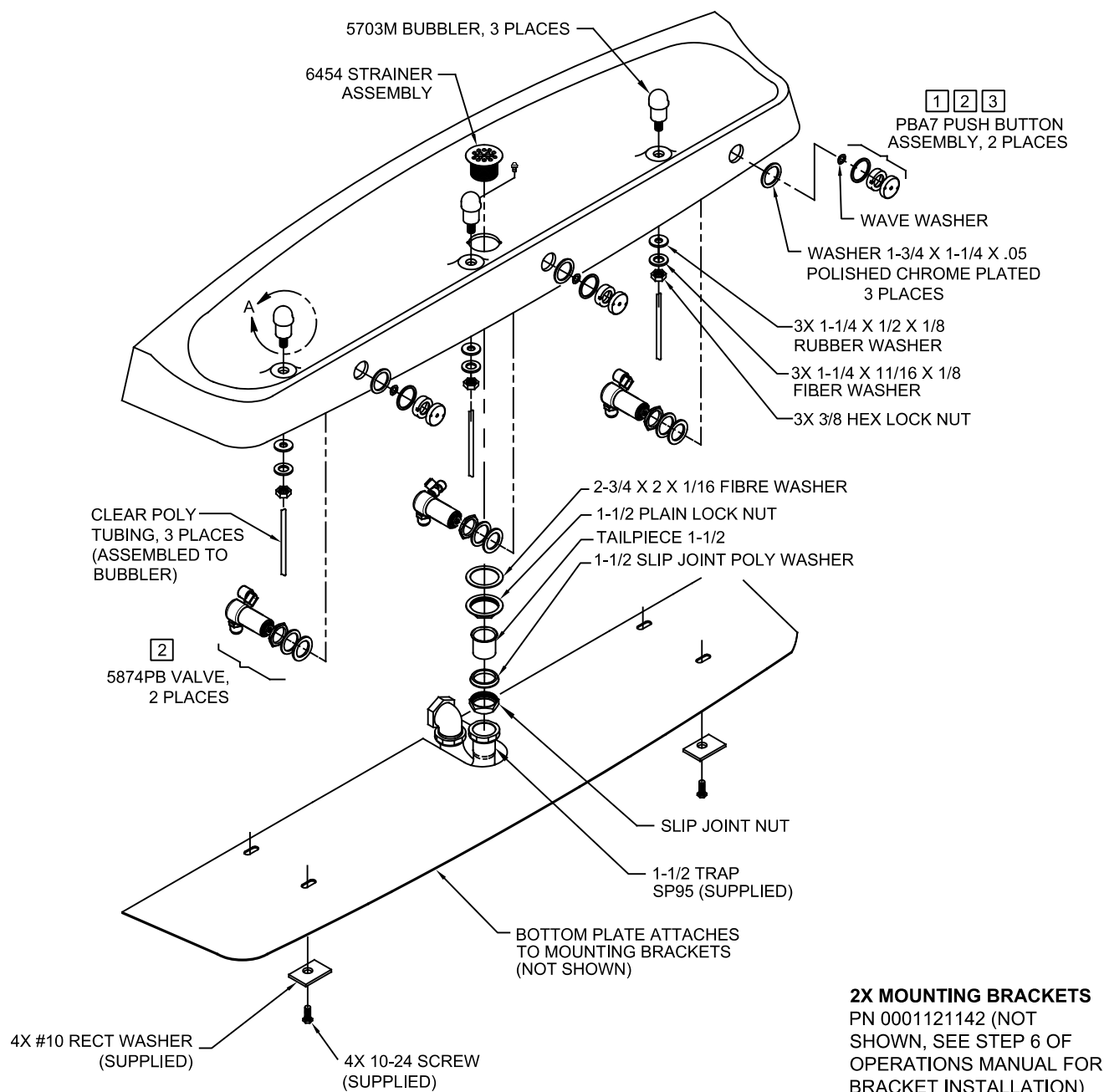
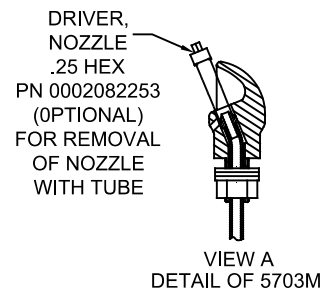
- STEP 3:** Make tubing connections from bubbler to the outlet side of control valve (Refer to Installation drawing). Follow instructions for tubing preparation, and insertion depths from Step 3.
- STEP 4:** Place strainer into receptor, using putty; secure in place using fiber washer and lock nut.
- STEP 5:**
1. Attach mounting brackets to wall using 3/8-16 mounting hardware (not supplied); **Hand tighten only** at this point.
 2. Align bowl over brackets such that bowl alignment tabs slide into slots at tops of brackets and bottom bowl tabs slide between or around brackets.
 3. Adjust brackets as needed to align bracket slots with bowl bottom tab holes and attach bowl to brackets using (1) 1/4-20 screw, (2) 1/4 ID Fender washers, (1) 1/4-20 hex nut per bracket. Insert mounting hardware such that screw heads cover holes in bowl bottom tabs, and Fender washers & nuts cover bracket slots; **Hand tighten only** at this point.
 4. Level bowl and **fully tighten** all mounting hardware such that bowl does not move when rocked up and down, nor move away from wall when pulled on.
- STEP 6:** Flush supply line to clear debris. Connect to a 1/2" IPS supply line and tighten.
- STEP 7:** Connect waste trap (supplied) to 1-1/2" IPS waste pipe (not supplied).
- STEP 8:** Completely open the screwdriver stop (not supplied) and check for leaks.
- STEP 9:** Adjust valves for desired flow height. See 5874 Series Valve Manual (supplied).
- STEP 10:** Attach bottom plate to fountain using #10-24 hardware provided.

TROUBLESHOOTING			
PROBLEM		REPAIR CHECKLIST	
1.	Insufficient bubbler flow.	1a.	Check that inlet screwdriver stop valve is in wide-open position.
		b.	Verify minimum 30 psi flowing supply pressure.
		c.	Clean strainer. See 5874 Series Valve Manual.
		d.	Adjust valve to increase flow. Use front adjust screw or see 5874 Series Valve Manual.

For more information about Haws products, see our website: www.hawscos.com

NOTES:

- 1 APPLY ONE DOT OF LOCTITE 222MS THREADLOCKER ON FEMALE THREADS OF PUSH BUTTON. SEE 5874 SERIES OPERATION AND MAINTENANCE MANUAL FOR PROPER APPLICATION PROCEDURE.
- 2 5874PB INCLUDES VRK5874 CARTRIDGE ASSEMBLY (NOT SHOWN) AND PBA7 PUSHBUTTON.
- 3 REFER TO 5874 SERIES/VRK5874 OPERATION AND MAINTENANCE MANUAL FOR INSTALLATION INSTRUCTIONS.
4. FOR TUBING ROUTING AND LENGTHS SEE SHEET 2 OF INSTALLATION DRAWING.



PARTS BREAKDOWN

WHEN ORDERING PARTS PLEASE SPECIFY MODEL NUMBER.



1455 KLEPPE LANE
SPARKS, NEVADA 89431
(775) 359-4712 FAX (775) 359-7424
E-MAIL: HAWS@HAWS.CO.COM
WEBSITE: WWW.HAWS.CO.COM

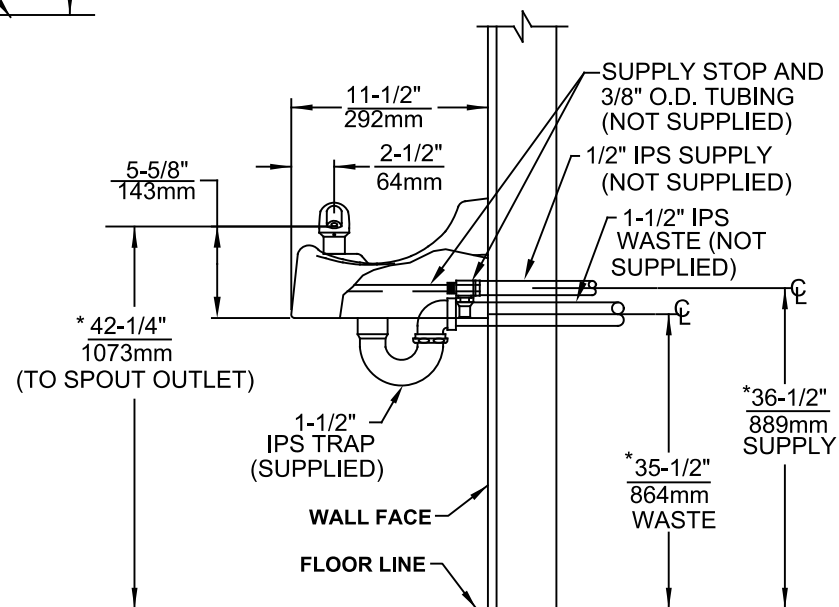
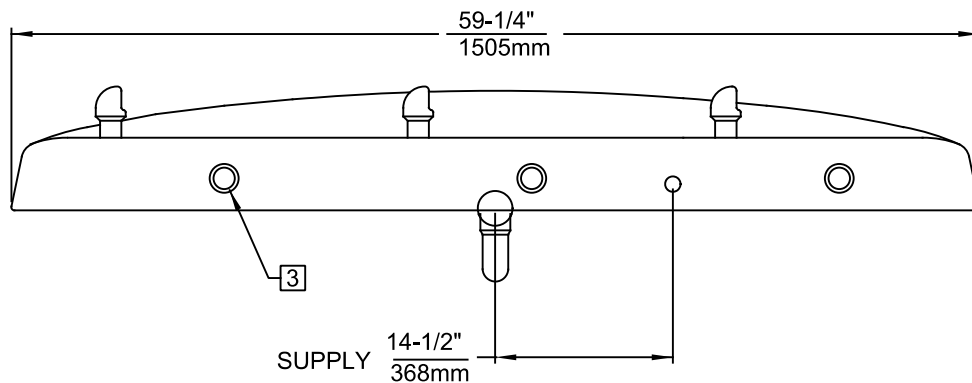
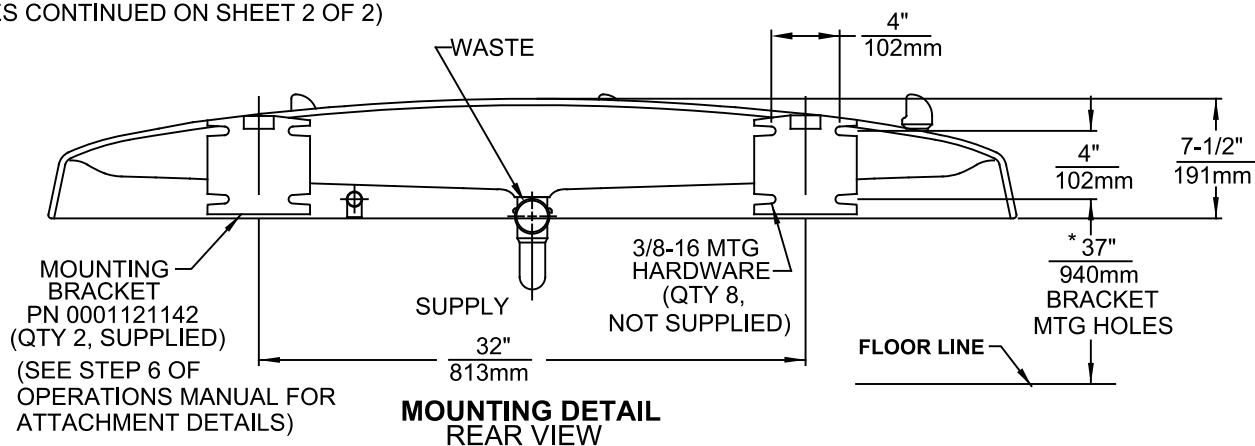
ECN NO.	REVISED PER	BY	MODEL(S)	PART NUMBER
DRAWN	DATE	CHKD		0002076860
D.LOLLOM	08/29/97	JC	1435	REVISION
APPROVED	DATE		THREE-BUBBLER FOUNTAIN	18
FV	06/25/24		SCALE: 1:14	DRAWING TYPE: PARTS BREAKDOWN
			SIZE: A	SHEET 1 OF 1

NOTES:

1. ROUGH-IN DIMENSIONS MAY VARY $\pm 1/4"$ (6.4mm)
2. WHEN INSTALLING THIS UNIT LOCAL, STATE OR FEDERAL CODES SHOULD BE ADHERED TO. FOR INSTALLATION HEIGHTS OTHER THAN SHOWN, DIMENSIONS MARKED (*) MUST BE ADJUSTED ACCORDINGLY.

3 REFER TO 5874 SERIES OPERATION AND MAINTENANCE MANUAL FOR PUSH BUTTON AND VALVE INSTALLATION/MAINTENANCE INSTRUCTIONS.

(NOTES CONTINUED ON SHEET 2 OF 2)

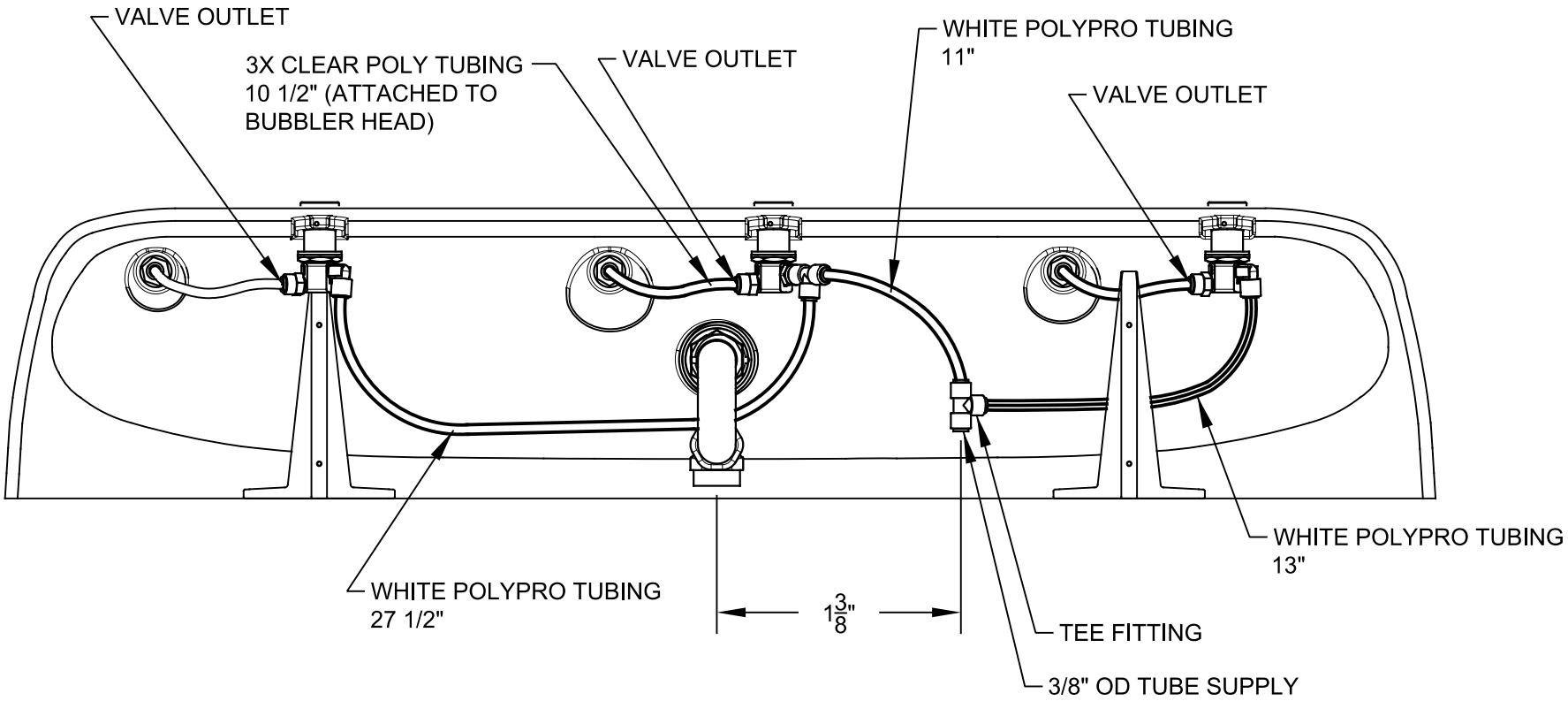


1455 KLEPPE LANE
SPARKS, NEVADA 89431
(775) 359-4712 FAX (775) 359-7424
E-MAIL: HAWS@HAWS.CO.COM
WEBSITE: WWW.HAWS.CO.COM

ECN NO.	REVISED PER	BY:	MODEL(S)	PART NUMBER
	ECN: 5967	FV		0002076860.D
DRAWN:	DATE:	CHKD.:	1435	REVISION
CJL	01-01-91	JC	THREE BUBBLER FOUNTAIN	18
APPROVED:	DATE:	SCALE:	DRAWING TYPE:	INSTALLATION
FV	06/25/24	1:11		
				SIZE: A SHEET 1 OF 2

NOTES: (CONTINUED)

- 4. CONNECT WHITE "POLYPROPYLENE" TUBING ON PRESSURE SIDE (INLET) OF VALVE.
- 5. CONNECT CLEAR "POLYETHYLENE" TUBING ON FREE FLOW SIDE (VALVE TO BUBBLER HEAD) ONLY.



TUBING ROUTING DETAIL
BOTTOM VIEW



1455 KLEPPE LANE
SPARKS, NEVADA 89431
(775) 359-4712 FAX (775) 359-7424
E-MAIL: HAWS@HAWS.CO.COM
WEBSITE: WWW.HAWS.CO.COM

ECN NO. 5188	REVISED PER ECN: 5967	BY: FV	MODEL(S)	PART NUMBER
DRAWN: CJL	DATE: 11-01-91	CHK'D: JC	1435	0002076860.D
APPROVED: FV	DATE: 06/25/24		THREE BUBBLER FOUNTAIN	REVISION 18
SCALE: 1:11			DRAWING TYPE: INSTALLATION	SIZE: A SHEET 2 OF 2