



INSTALLATION, OPERATION & MAINTENANCE INSTRUCTIONS

1455 Kleppe Lane ♦ Sparks, NV 89431-6467 ♦ (775) 359-4712 ♦ Fax (775) 359-7424
E-mail: Info@hawsco.com ♦ website: www.hawsco.com

No. 0580000675 (2)

Model 1117LN Drinking Fountain

NOTE TO INSTALLER: Please leave this information with the Maintenance Department.

LIMITED WARRANTY

HAWS warrants that all of its products are guaranteed against defective material or poor workmanship for a period of **one year from the date of shipment**. The foregoing notwithstanding, *HAWS* warrants certain specific products or components thereof for an adjusted period. A list of these excepted products and components and a description of their respective warranty terms may be found here: www.hawsco.com/warranty. *HAWS*' liability under this warranty shall be discharged by furnishing without charge F.O.B. *HAWS* factory any goods, or part thereof, which shall appear to the Company upon inspection to be of defective material or not of first-class workmanship, provided that a claim is made in writing to Company within a reasonable period after receipt of the product. Where claims for defects are made, the defective part or parts shall be delivered to the Company, prepaid, for inspection. *HAWS* shall not be liable for the cost of repairs, alterations or replacements, or the labor required to implement them, or for any expense connected therewith made by the owner or owner's agents, except upon written authority from *HAWS*. *HAWS* shall not be liable for any damages caused by defective materials or poor workmanship, except for replacements, as provided above. Buyer agrees that *HAWS* has made no other warranties either express or implied in addition to those above stated, except that of title with respect to any of the products or equipment sold hereunder and that *HAWS* shall not be liable for general, special, incidental, or consequential damages claimed to arise under the contract of sale.

Equipment manufactured by *HAWS* is warranted to function if installation and maintenance instructions provided are adhered to. The units also must be used for the purpose for which they were intended. Any *HAWS* emergency equipment is intended to supplement first-aid treatment. Due to widely varying conditions, *HAWS* cannot guarantee that the use of this emergency equipment will prevent serious injury or the aggravation of existing or prior injuries.

EXCEPT AS EXPRESSLY STATED HEREIN, HAWS HEREBY DISCLAIMS ALL WARRANTIES, WHETHER EXPRESS OR IMPLIED, ARISING BY LAW OR OTHERWISE, INCLUDING WITHOUT LIMITATION, ANY IMPLIED WARRANTIES OF MERCHANTABILITY AND FITNESS FOR A PARTICULAR PURPOSE. THIS WARRANTY MAY NOT BE MODIFIED OR EXTENDED WITHOUT THE WRITTEN CONSENT OF HAWS. REMEDIES AND REPLACEMENTS STATED HEREIN ARE EXCLUSIVE. IN NO EVENT SHALL HAWS BE LIABLE FOR ANY SPECIAL, PUNITIVE, CONSEQUENTIAL OR INCIDENTAL DAMAGES TO ANY PERSON INCLUDING BUT NOT LIMITED TO DAMAGES FOR LOSS OF USE OR PROFITS, SUBSTITUTE PRODUCTS OR COSTS, PROPERTY DAMAGE. OR OTHER MONETARY LOSS.

SHOULD YOU EXPERIENCE DIFFICULTY WITH THE INSTALLATION OF THIS MODEL PLEASE CALL:

TECHNICAL SUPPORT: 1-800-766-5612
FOR CUSTOMER SERVICE: 1-888-640-4297

RECOMMENDED TOOLS: Hack saw, pipe joint sealant, screwdriver, level, 12" adjustable wrench, 10" pipe wrench, 5/64" hex key wrench, 9/16", 1/2", 7/16" socket wrench or open end wrench.

LOCATION OF UNIT: The Model 1117LN Drinking Fountain is a wheelchair accessible drinking water facility. The height dimensions that are shown meet current ADA requirements. When installing this unit, local, state or federal codes should be adhered to. If height other than shown is required, then dimensions must be adjusted accordingly.

SUPPLY LINE: The minimum recommended line size is 1/2"IPS with 30-90 psi (2-6 ATM) flowing pressure. Where sediment or mineral content is a problem, an inlet filter is recommended.

PLUMBING CONNECTIONS: Inlet is 3/8"O.D. push-in type fitting. Waste outlet is female 1-1/4" IPS.

ELECTRICAL CONNECTIONS (When equipped with optional Hands-Off Bottle Filler model 1920HO): Bottle Filler may be mounted on external wall of building provided transformer shall be mounted inside the wall and protected from water per NEC/CEC and local code.

Sensor: 1920HO with 1RKHO.H: 100-277VAC x 9VDC, 50-60Hz, 5 Watts

MAINTENANCE: Periodically clean the strainer (Located inside push button valves on model 1117LN or 1920 if also installed). Refer to 5874 Series Valve Manual for more information. Also, clean supply line Y-strainer on model 1920HO (when equipped with this optional model).

INSTALLATION PROCEDURE

GENERAL NOTES:

1. For all plastic push-in type fitting connections, only connect NSF-61 copper or plastic tubing. Stainless steel or glass tubing is not recommended. The following assembly instructions must be followed to ensure a watertight connection:
 - a. Cut tubing square and clean.
 - b. Mark from end of tube the length of insertion (See table below).
 - c. Push tube into the fitting until it bottoms out.
 - d. To remove, depress collet and pull tubing out.

Tube Sizes	O.D. Tolerance	Insertion Depth
3/8"	±.005"	3/4"

2. If installing this unit with optional 1920HO (Hands-Off Model) or 1920:
 - a. Refer to the 1920 Series manual (supplied with model 1920HO or 1920) for detailed installation & operation instructions.
 - b. It is recommended to use Model 6700 Mounting Plate (not supplied) with Model BP32 Back Panel (standard Hi-Lo configuration - not supplied).
 - c. Reference page 6 of this document for 1920HO sensor or 1920 push button height (Mounting hardware not supplied with Bottle Filler Water Dispenser).
 - d. Adjust nozzle flow rate using pressure regulator mounted inside bracket (1920HO) or front adjust screw located on push button valve (1920).
 - e. Refer to the 1RKHO.H manual for Transformer and Sensor Setup instructions (supplied with model 1920HO).

5874 SERIES VALVE TROUBLESHOOTING (MODEL 1117LN AND WHEN EQUIPPED WITH OPTIONAL MODEL 1920)

PROBLEM	REPAIR CHECKLIST
1. Insufficient bubbler or nozzle flow.	1a. Check that inlet screwdriver stop valve is wide open. Turn counterclockwise or clockwise. Direction depends on style of shut-off valve. b. Verify minimum 30 psi flowing supply pressure. c. Clean strainer. See 5874 Series Valve Manual d. Adjust valve to increase flow. Use front adjust screw or see 5874 Series Valve Manual. e. Make sure bottle filler nozzle is free of debris.

SENSOR/SOLENOID TROUBLESHOOTING (WHEN EQUIPPED WITH HANDS-OFF MODEL 1920HO. REFER TO 1RKHO.H MANUAL FOR EXPANDED LIST)

PROBLEM	REPAIR CHECKLIST
1. Insufficient nozzle flow.	1a. Check that inlet screwdriver stop valve is wide open. Turn counterclockwise or clockwise. Direction depends on style of shut-off valve. b. Verify minimum 30 psi flowing supply pressure. c. Clean supply line Y-strainer. d. Adjust pressure regulator valve to increase flow (Loosen locknut and rotate knob clockwise to increase flow and tighten locknut). e. Make sure bottle filler nozzle is free of debris.
2. Nozzle does not activate.	2a. Check wiring harness. Replace if necessary. b. Check solenoid valve. Replace if necessary. c. Check sensor. Replace if necessary. d. Check transformer for 9V output at terminals; replace if necessary.

For more information about Haws products, see our website: www.hawsc.com

NOTES:

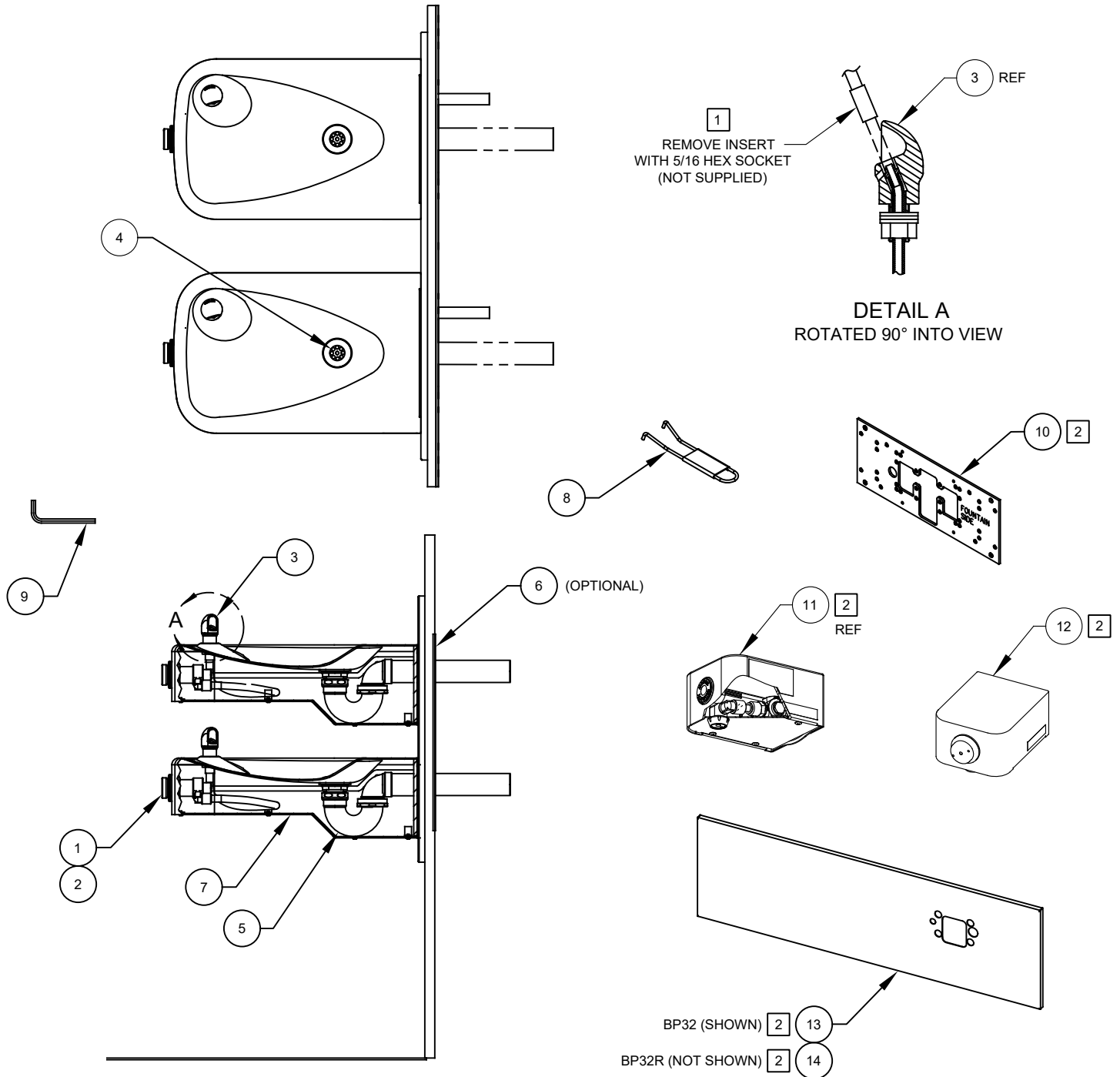
1 ENSURE TUBE IS DISCONNECTED FROM PUSH BUTTON VALVE BODY PRIOR TO REMOVAL. APPLY ONE DROP OF LOCTITE 222MS TO NOZZLE THREADS PRIOR TO FASTENING BACK ONTO BUBBLER HEAD. RE-ATTACH TUBE TO VALVE.

2 ITEMS 10 THRU 14 ARE OPTIONAL AND CAN BE CONFIGURED TO ADD EITHER A HANDS-OFF (1920HO) OR PUSH BUTTON (1920) BOTTLE FILLER, MOUNTED ON R.H. SIDE OF BACK PANEL (BP32) OR L.H. SIDE (REVERSED) OF BACK PANEL (BP32R) ON DUAL FOUNTAIN MODEL 1117LN.

ITEM	DESCRIPTION	1117LN
1	VALVE REPAIR KIT	VRK5874
2	PUSH BUTTON ASSY	PBA6
3	BUBBLER HEAD ASSY, PCP	5703M
4	STRAINER, WASTE ASSY	6462
5	TRAP	0005982900
6	PLATE MOUNTING	6700.4
7	PLATE BOTTOM	PBM1107
8	SPANNER WRENCH	0006983506
9	KEY HEX F/PINNED HEX	0002981127
10	PLATE MOUNTING	6700
11	BOTTLE FILLER, HANDS-OFF	1920HO
12	BOTTLE FILLER	1920
13	BACK PANEL FOR 1920 OVER DUAL FOUNTAIN	BP32
14	BACK PANEL BF 32 REVERSED	BP32R


(OPTIONAL)

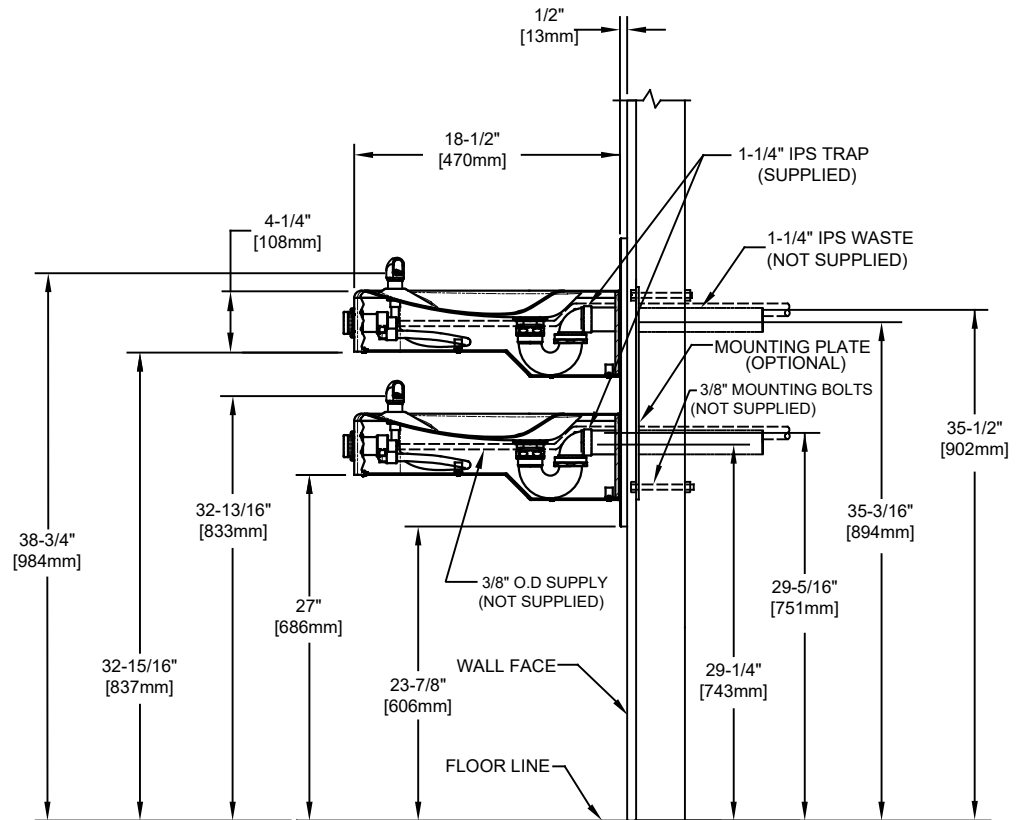
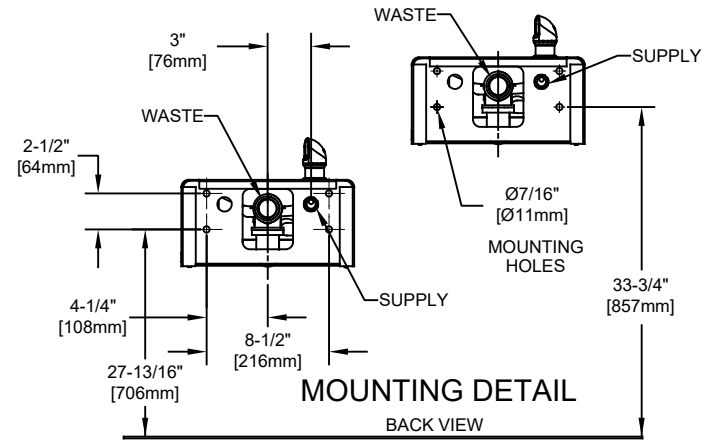
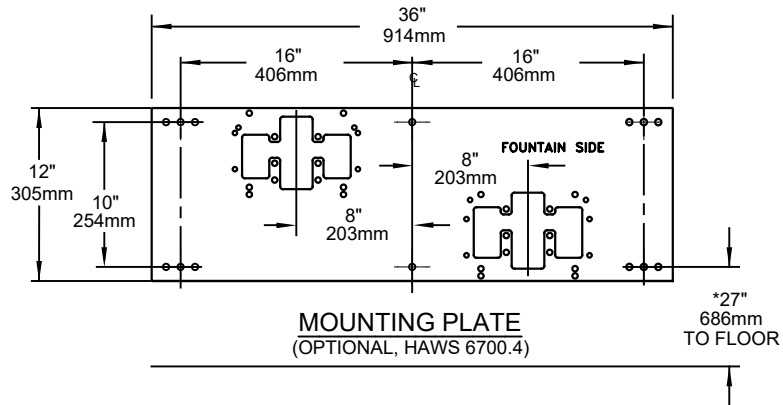
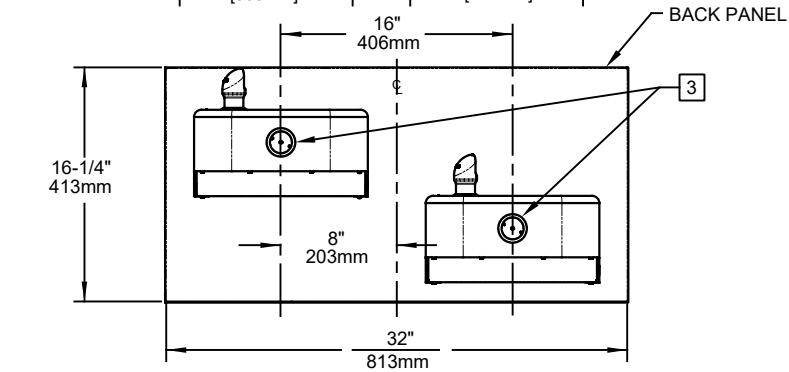
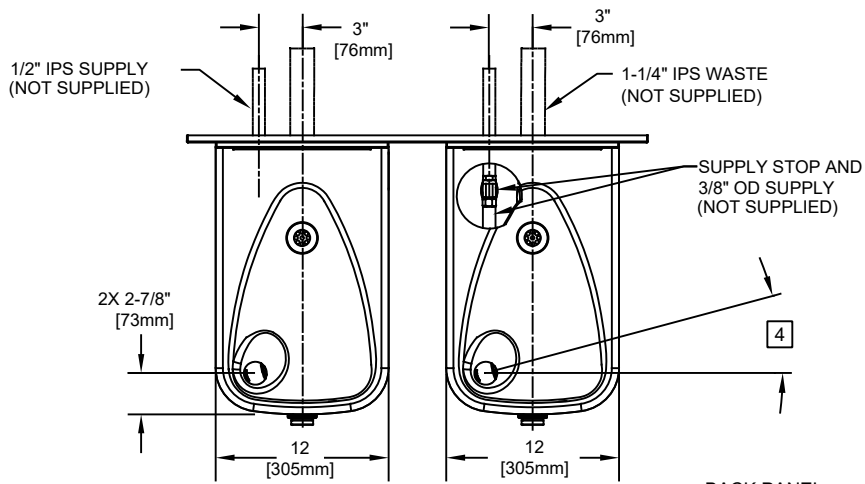
2



PARTS BREAKDOWN

WHEN ORDERING PARTS PLEASE SPECIFY MODEL NUMBER.

 Haws [®]			1455 KLEPPE LANE SPARKS, NEVADA 89431 (775) 359-4712 FAX (775) 359-7424 E-MAIL: HAWS@HAWSCO.COM WEBSITE: WWW.HAWSCO.COM	
ECN NO. 5221	REVISED PER ECN: 5744	BY FV	MODEL(S)	PART NUMBER
DRAWN GC	DATE 08/23/17	CHKD BJM	1117LN	0580000675
APPROVED FV	DATE 10/11/21		SCALE: 1:1	REVISION 3
			DRAWING TYPE: PARTS BREAKDOWN	SIZE: A SHEET 1 OF 1

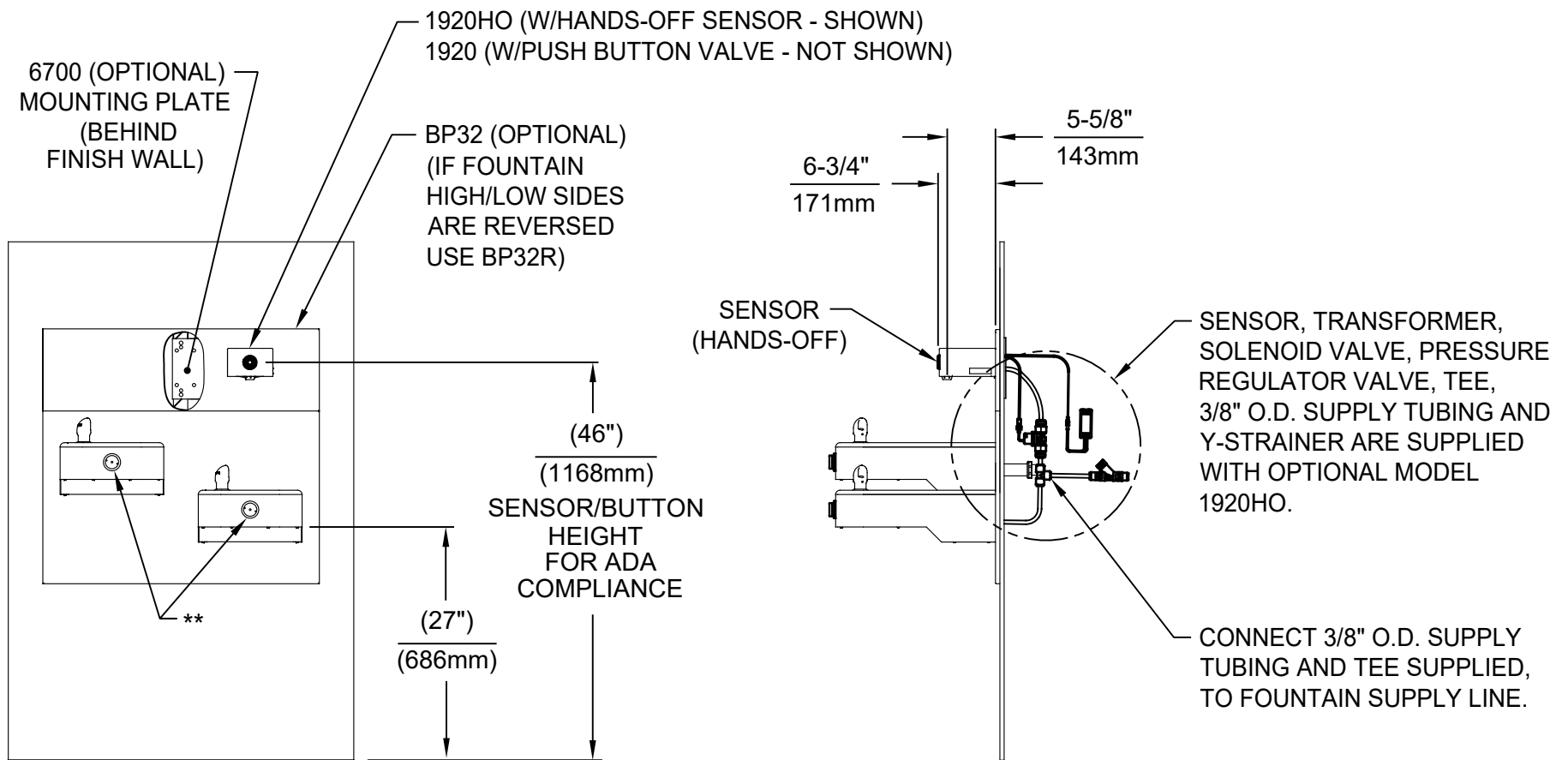


NOTES:

1. HOLD ROUGH-IN DIMENSIONS ± 1/8" (3.2mm).
2. WHEN INSTALLING THIS UNIT, LOCAL, STATE, OR FEDERAL CODES SHOULD BE ADHERED TO. FOR INSTALLATION HEIGHTS OTHER THAN SHOWN, DIMENSIONS MARKED (*) MUST BE ADJUSTED ACCORDINGLY.
- 3 REFER TO 5874SS/VRK5874 OPERATION AND MAINTENANCE MANUAL FOR PUSH BUTTON AND VALVE INSTALLATION/MAINTENANCE INSTRUCTONS.
- 4 MAXIMUM ADJUSTABLE RANGE IS 15° FROM PARALLEL TO BACK OF WALL.


SEE SHEET 2 FOR OPTIONAL
1920/1920HO BOTTLE FILLER WATER
DISPENSER, SHOWN INSTALLED OVER
MODEL 1117LN

		1455 KLEPPE LANE SPARKS, NEVADA 89431 (775) 359-4712 FAX (775) 359-7424 E-MAIL: HAWS@HAWSCO.COM WEBSITE: WWW.HAWSCO.COM	
		MODEL(S) 1117LN	PART NUMBER 058000675.D REVISION 3
ECN NO. 5221 DRAWN: GC APPROVED: FV	REVISED PER: FV ECN: 5744 DATE: 08/23/17 DATE: 10/11/21	SCALE: 1:14 DRAWING TYPE: INSTALLATION	SHEET 1 OF 2



**OPTIONAL 1920/1920HO BOTTLE FILLER WATER DISPENSER
(1920HO SHOWN) INSTALLED OVER 1117LN
(SEE 1920 SERIES OPERATION AND MAINTENANCE MANUAL FOR COMPLETE DETAILS)
SEE SHEET 1 FOR 1117LN ROUGH-IN DIMENSIONS**

** EXISTING PUSH BUTTON ASSEMBLY SHOWN, CAN BE CONVERTED TO HANDS OFF STYLE, USING RETRO-FIT KIT MODEL 1RKHO.H OR 2RKHO.H DEPENDING ON CUSTOMER REQUIREMENTS.

		1455 KLEPPE LANE SPARKS, NEVADA 89431 (775) 359-4712 FAX (775) 359-7424 E-MAIL: HAWS@HAWS.CO.COM WEBSITE: WWW.HAWS.CO.COM	
		ECN NO. 5744 DRAWN: FV APPROVED: FV	REVISED PER: FV DATE: 10/05/21 DATE: 10/11/21
		PART NUMBER 058000675.D	REVISION 3
		SCALE: N/A	DRAWING TYPE: INSTALLATION
		SIZE: A	SHEET 2 OF 2