



## INSTALLATION, OPERATION & MAINTENANCE INSTRUCTIONS

1455 Kleppe Lane ♦ Sparks, NV 89431-6467 ♦ (775) 359-4712 ♦ Fax (775) 359-7424  
E-mail: [haws@hawsco.com](mailto:haws@hawsco.com) ♦ website: [www.hawsco.com](http://www.hawsco.com)

No. 0002076626 (17)

### Model 1109FR Drinking Fountain

**NOTE TO INSTALLER: Please leave this information with the Maintenance Department.**

#### LIMITED WARRANTY

*HAWS* warrants that all of its products are guaranteed against defective material or poor workmanship for a period of **one year from the date of shipment**. The foregoing notwithstanding, *HAWS* warrants certain specific products or components thereof for an adjusted period. A list of these excepted products and components and a description of their respective warranty terms may be found here: [www.hawsco.com/warranty](http://www.hawsco.com/warranty). *HAWS*' liability under this warranty shall be discharged by furnishing without charge F.O.B. *HAWS* factory any goods, or part thereof, which shall appear to the Company upon inspection to be of defective material or not of first-class workmanship, provided that a claim is made in writing to Company within a reasonable period after receipt of the product. Where claims for defects are made, the defective part or parts shall be delivered to the Company, prepaid, for inspection. *HAWS* shall not be liable for the cost of repairs, alterations or replacements, or the labor required to implement them, or for any expense connected therewith made by the owner or owner's agents, except upon written authority from *HAWS*. *HAWS* shall not be liable for any damages caused by defective materials or poor workmanship, except for replacements, as provided above. Buyer agrees that *HAWS* has made no other warranties either express or implied in addition to those above stated, except that of title with respect to any of the products or equipment sold hereunder and that *HAWS* shall not be liable for general, special, incidental, or consequential damages claimed to arise under the contract of sale.

Equipment manufactured by *HAWS* is warranted to function if installation and maintenance instructions provided are adhered to. The units also must be used for the purpose for which they were intended. Any *HAWS* emergency equipment is intended to supplement first-aid treatment. Due to widely varying conditions, *HAWS* cannot guarantee that the use of this emergency equipment will prevent serious injury or the aggravation of existing or prior injuries.

**EXCEPT AS EXPRESSLY STATED HEREIN, HAWS HEREBY DISCLAIMS ALL WARRANTIES, WHETHER EXPRESS OR IMPLIED, ARISING BY LAW OR OTHERWISE, INCLUDING WITHOUT LIMITATION, ANY IMPLIED WARRANTIES OF MERCHANTABILITY AND FITNESS FOR A PARTICULAR PURPOSE. THIS WARRANTY MAY NOT BE MODIFIED OR EXTENDED WITHOUT THE WRITTEN CONSENT OF HAWS. REMEDIES AND REPLACEMENTS STATED HEREIN ARE EXCLUSIVE. IN NO EVENT SHALL HAWS BE LIABLE FOR ANY SPECIAL, PUNITIVE, CONSEQUENTIAL OR INCIDENTAL DAMAGES TO ANY PERSON INCLUDING BUT NOT LIMITED TO DAMAGES FOR LOSS OF USE OR PROFITS, SUBSTITUTE PRODUCTS OR COSTS, PROPERTY DAMAGE, OR OTHER MONETARY LOSS.**

**SHOULD YOU EXPERIENCE DIFFICULTY WITH THE INSTALLATION OF THIS MODEL PLEASE CALL:**

**TECHNICAL SUPPORT: 1-800-766-5612**  
**FOR CUSTOMER SERVICE: 1-888-640-4297**

**RECOMMENDED TOOLS:** Hack saw, pipe joint sealant, screwdriver, level, 12" adjustable wrench, 10" pipe wrench, 5/64" hex key wrench, 9/16", 1/2", 7/16" socket wrench or open end wrench.

**LOCATION OF UNIT:** The Model 1109FR Drinking Fountain is a wheelchair accessible drinking water facility. The height dimensions shown meet current ADA requirements. When installing this unit, local, state or federal codes should be adhered to. If height other than shown is required, then dimensions must be adjusted accordingly.

**SUPPLY LINE:** The minimum recommended line size is 1/2" IPS with 30-90 psi (2-6 ATM) flowing pressure. Where sediment or mineral content is a problem, an inlet filter is recommended.

**PLUMBING CONNECTIONS:** Waste outlet is 1-1/4" NPT (located on 6521FR Valve box).

**MAINTENANCE:** Periodically clean the inlet strainer screen located in the 5881 valve body. Refer to 6521FR Valve Operation and Maintenance sheet for more information.

TROUBLESHOOTING	
PROBLEM	REPAIR CHECKLIST
1. Insufficient bubbler flow.	<ul style="list-style-type: none"><li>1a. Check that inlet screwdriver stop valve is wide open. (Customer supplied). Turn counterclockwise.</li><li>b. Verify minimum 30 psi flowing supply pressure.</li><li>c. Clean inlet strainer screen located in the 5881 valve body.</li><li>d. Adjust pressure regulator to increase flow. See 6521FR Valve Manual.</li></ul>

**General Notes:**

Before tightening nut and ferrule assembly, push tubing into fitting until it bottoms out to ensure correct engagement with O-Ring.

For more information about Haws products, see our website: [www.hawsco.com](http://www.hawsco.com)

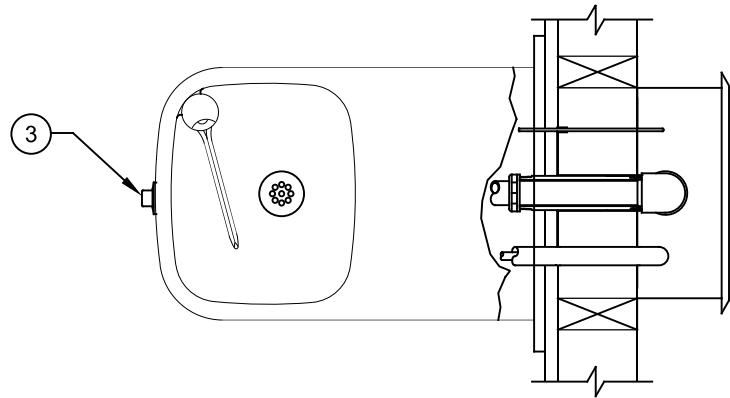
# PARTS BREAKDOWN

ITEM	DESCRIPTION	PART NO.
* 1	BACK PANEL	BP3
2	BUBBLER HEAD	5703M
3	PUSH BTN ASS'Y	5881PBA
4	BOTTOM PLATE	PBM1109
*** 5	FREEZE RESISTANT VALVE	6521FR
** 6	MOUNTING PLATE	6700

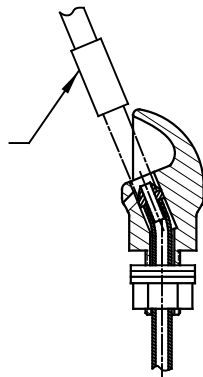
\* OPTIONAL - SOLD SEPARATELY OR AS PART OF PRODUCT BUNDLE 1109FRP.

\*\* OPTIONAL - SOLD SEPARATELY OR AS PART OF PRODUCT BUNDLES 1109FRB & 1109FRP.

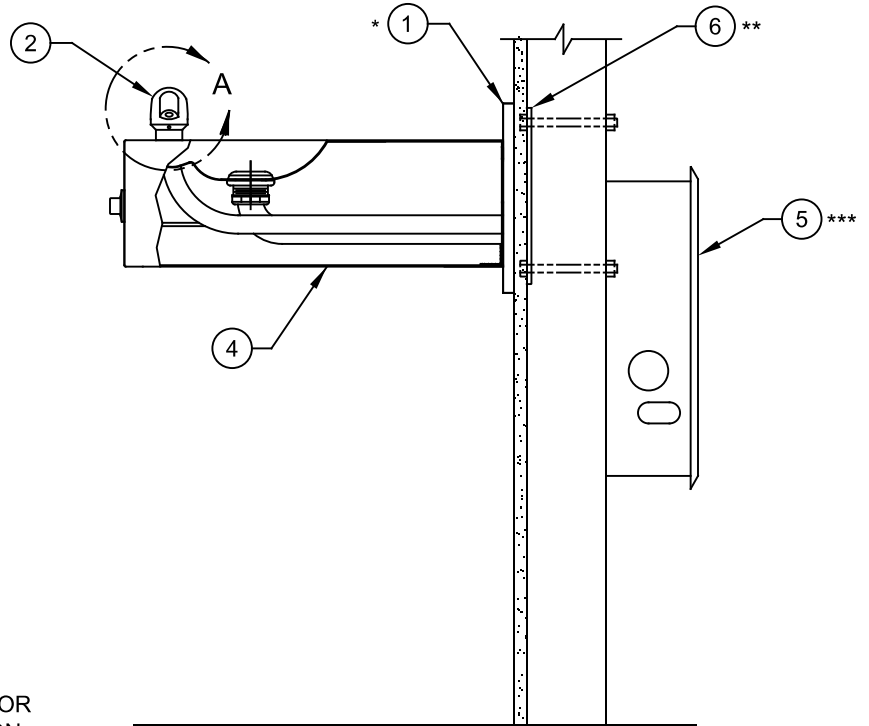
\*\*\* REQUIRED - SOLD SEPARATELY OR AS PART OF PRODUCT BUNDLES 1109FRB & 1109FRP.



1  
REMOVE INSERT  
WITH  
5/16 HEX SOCKET  
(NOT SUPPLIED)




DETAIL A  
ROTATED 90° INTO VIEW  
DETAIL OF ITEM 2

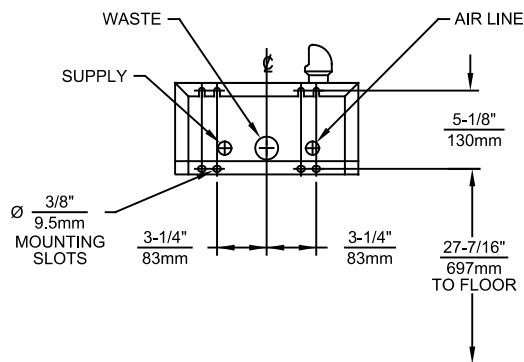


## NOTE:

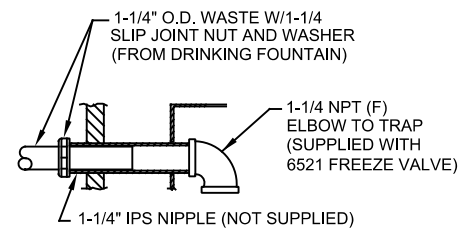
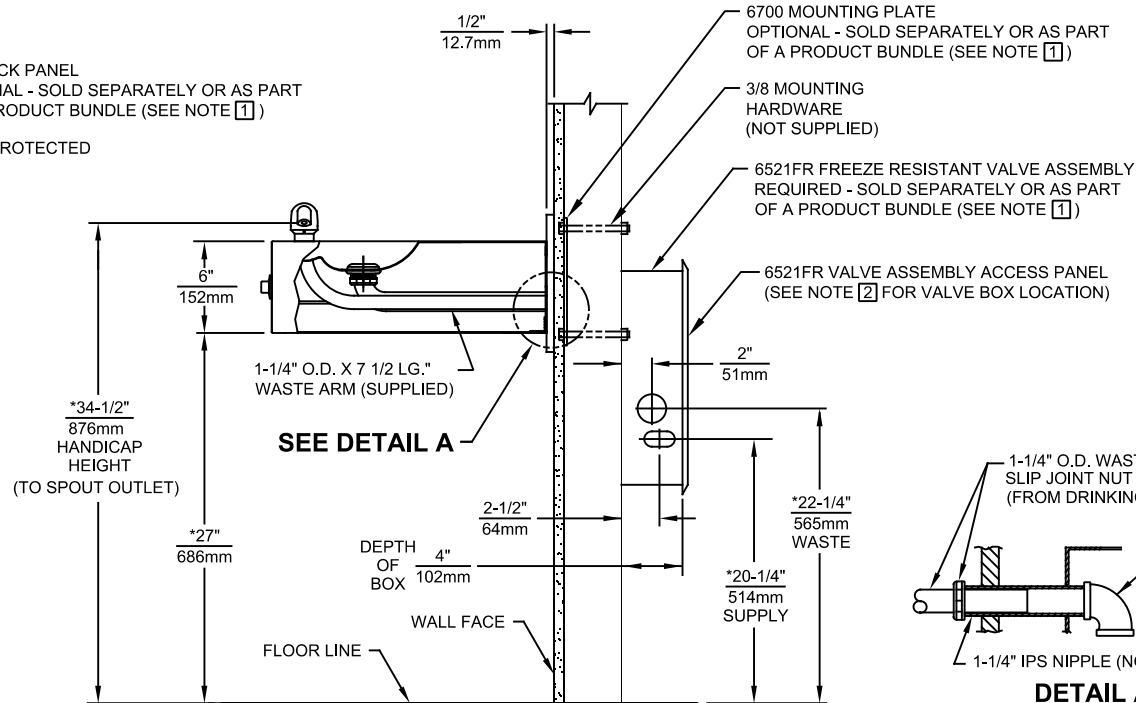
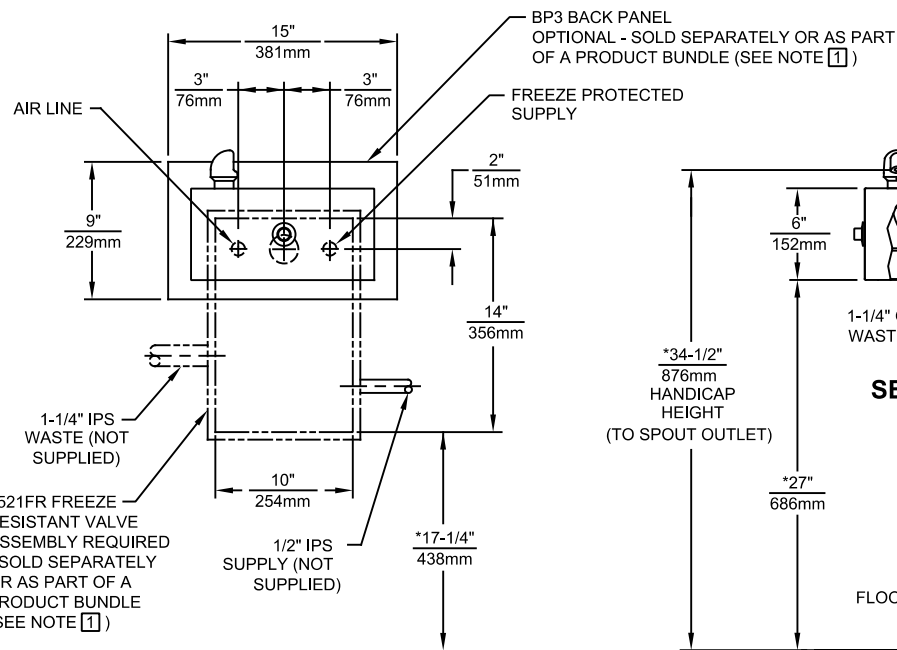
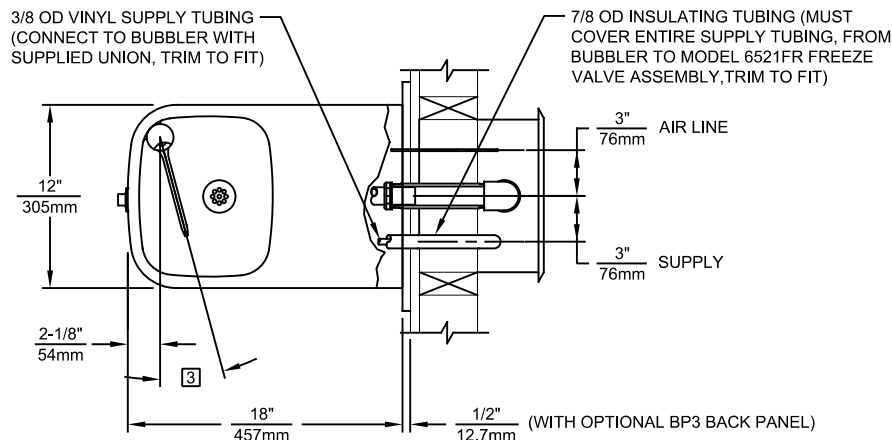
- 1 ENSURE TUBE IS DISCONNECTED FROM "PUSH-IN" TYPE CONNECTOR ON PRESSURE REGULATOR PRIOR TO REMOVAL. APPLY A DROP OF LOCTITE 222MS ON NOZZLE THREADS PRIOR TO REASSEMBLING BACK ONTO BUBBLER HEAD. REATTACH TUBE TO "PUSH-IN" TYPE CONNECTOR ENSURING IT IS FULLY BOTTOMED OUT.

WHEN ORDERING PARTS PLEASE SPECIFY MODEL NUMBER.

 <b>Haws</b> Since 1906		1455 KLEPPE LANE SPARKS, NEVADA 89431 (775) 359-4712 FAX (775) 359-7424 E-MAIL: HAWS@HAWS.CO.COM WEBSITE: WWW.HAWS.CO.COM	
ECN NO.	REVISED PER	BY	MODEL(S)
	ECN: 5931	FV	1109FR
DRAWN	DATE	CHKD	PART NUMBER
FV	06-08-98	KM	0002076626
APPROVED	DATE		REVISION
FV	10/17/24		17
SCALE: 1:4		DRAWING TYPE: PARTS BREAKDOWN	
SIZE: A		SHEET 1 OF 1	



**MOUNTING DETAIL  
BACK VIEW**



**DETAIL A**

**NOTES:**

- 1 PRODUCT BUNDLES AVAILABLE:  
MODEL 1109FRB (QTY. 1 EACH 1109FR, 6521FR & 6700)  
MODEL 1109FRP (QTY. 1 EACH 1109FR, BP3, 1920FR\*, BP15\* & 6469\* (NOT SHOWN), QTY. 2 EACH 6521FR & 6700). SEE 6521FR INSTALLATION INSTRUCTIONS FOR CONNECTION DETAILS.
- 2 VALVE ASSEMBLY MUST BE INSTALLED IN A WARM AREA. PROVISIONS SHOULD BE MADE TO ALLOW ACCESS TO ACCESS PANEL.

- 3 MAXIMUM ADJUSTABLE RANGE IS 15° FROM PARALLEL TO BACK OF WALL.
4. HOLD ROUGH-IN DIMENSIONS  $\pm 1/4"$  (6.4mm).
- 5.\* WHEN INSTALLING THIS UNIT LOCAL, STATE OR FEDERAL CODES SHOULD BE ADHERED TO. FOR INSTALLATION HEIGHTS OTHER THAN SHOWN, DIMENSIONS MARKED (\*) MUST BE ADJUSTED ACCORDINGLY.



1455 KLEPPE LANE  
SPARKS, NEVADA 89431  
(775) 359-4712 FAX (775) 359-7424  
E-MAIL: HAWS@HAWS.CO.COM  
WEBSITE: WWW.HAWS.CO.COM

ECN NO.	REVISED PER	BY:	MODEL(S)	PART NUMBER
	ECN: 5931	FV		0002076626.D
DRAWN:	DATE:	CHK'D:		REVISION
F.V.	06-01-98	KM		17
APPROVED:	DATE:			
FV	10/17/24			
SCALE: 1:16	DRAWING TYPE:	INSTALLATION	SIZE: A	SHEET 1 OF 1