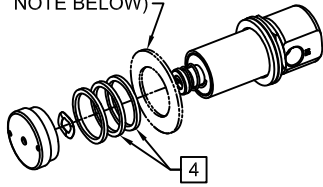


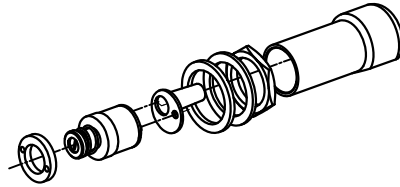
# PARTS BREAKDOWN

\*\*\* OPTIONAL PCP WASHER FOR FLUSH MOUNT SURFACES (SEE NOTE BELOW)

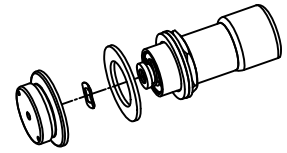


**5874PB** [1] [4] [5]

POLISHED CHROME PLATED PUSH BUTTON WITH VALVE FOR BOTH RECESSED AND FLUSH MOUNT SURFACES. (ALSO USED FOR REPLACEMENT OF OLDER VALVE MODELS 5871, 5872, AND 5872HF - SEE NOTES 4 AND 5)

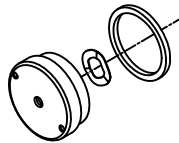


**5874SS** [1]



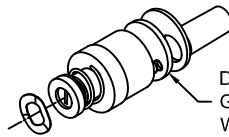
**5874PBF** [1]

POLISH CHROME PLATED FLANGE PUSH BUTTON WITH VALVE FOR FLUSH MOUNT SURFACES ONLY.



**PBA7**

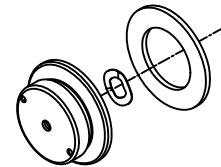
POLISHED CHROME PLATED PUSH BUTTON FOR BOTH RECESSED AND FLUSH MOUNT SURFACES.



**VRK5874** [1]

VALVE REPAIR KIT (STANDARD FLOW)

DO NOT REMOVE GASKET WHICH COMES WITH CARTRIDGE.



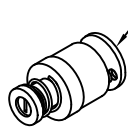
**PBA6**

POLISHED CHROME PLATED FLANGED PUSH BUTTON FOR FLUSH MOUNT SURFACES ONLY.



**0002568123** [3]

GASKET W/SCREEN



**0001632151** [2] [3] [5]

VALVE CARTRIDGE (HIGH FLOW)

DO NOT REMOVE GASKET WHICH COMES WITH CARTRIDGE.



**0006626653**

WAVE WASHER FOR USE WITH BOTH RECESSED AND FLANGED STYLE PUSH BUTTON ASSEMBLIES. (MUST BE IN PLACE FOR PROPER PUSH BUTTON OPERATION)

## NOTES:

- [1] MODELS 5874PB, 5874PBF, 5874SS, AND VRK5874 ARE EQUIPPED WITH A STANDARD FLOW CARTRIDGE. ORDER THESE MODELS WHEN REPLACING/REPAIRING VALVES WITH A STANDARD FLOW APPLICATION. **DO NOT** USE ON ANY MODELS THAT FEATURE A CUSPIDOR OR HAVE A HIGH FLOW APPLICATION WITHOUT IMPLEMENTING ADDITIONAL REQUIRED STEPS (SEE NOTES 2 AND 3).
- [2] MODELS 1025/G AND 3300/G EQUIPPED WITH A POP-UP BUBBLER HEAD (MODEL 5725) AND MODEL 2406 (EQUIPPED WITH A CUSPIDOR) ALL UTILIZE A HIGH FLOW CARTRIDGE TO ENSURE PROPER FLOW.
- [3] WHEN REPLACING A HIGH FLOW CARTRIDGE ASSEMBLY, **DO NOT** USE VRK5874. INSTEAD, USE THE FOLLOWING ITEMIZED COMPONENTS: HIGH FLOW CARTRIDGE (PN 0001632151), GASKET W/SCREEN (PN 0002568123) AND WAVE WASHER (PN 0006626653).

### VALVE REPLACEMENT ON UNITS WITH OLDER 5871, 5872 (STANDARD FLOW) VALVES:

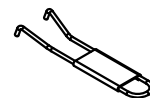
- [4] USE MODEL 5874PB AND TWO RING NUTS (SUPPLIED W/5874PB). USE ONE OR TWO OF THESE RING NUTS AS SPACERS TO MOVE THE NEW LONGER VALVE BODY FORWARD. THIS ALLOWS VALVE TO FIT IN TIGHT LOCATIONS FORMERLY OCCUPIED BY 5871 OR 5872 SERIES VALVES. **NOTE:** THESE RING NUTS MAY NOT ALWAYS BE NEEDED BUT ARE SUPPLIED IF REQUIRED.

### VALVE REPLACEMENT ON UNITS WITH OLDER 5872HF (HIGH FLOW) VALVES:

- [5] USE MODEL 5874PB, **BUT**, REPLACE THE STANDARD FLOW CARTRIDGE (SUPPLIED W/5874PB) WITH A HIGH FLOW CARTRIDGE (PN 0001632151). **NOTE:** FAILURE TO SWITCH CARTRIDGES WILL CREATE A LOW FLOW CONDITION. **NOTE:** USE ADDITIONAL RING NUTS IF NEEDED TO PROVIDE NECESSARY CLEARANCE FOR NEW LONGER VALVE BODY IN TIGHT LOCATIONS (SEE NOTE 4).



\*\*\* IF NEEDED, USE 1-3/4" O.D. X .050 THICK PCP WASHER PN 0006729529 (NOT SUPPLIED) IN SITUATIONS WHERE THE PUSH BUTTON HOLE IS SLIGHTLY OVERSIZED FOR THE 5874PB RING NUT.



**0006983506**

SPANNER WRENCH (ONLY INCLUDED WITH MODELS: 5874SS, 5874PB & 5874PBF)



**0003244389**

THREADLOCKER TO SECURE PUSH BUTTON (ONLY INCLUDED W/PB SERIES)

WHEN ORDERING PARTS PLEASE SPECIFY MODEL NUMBER.



1455 KLEPPE LANE  
SPARKS, NEVADA 89431  
(775) 359-4712 FAX (755) 359-7424  
E-MAIL: HAWS@HAWS.CO.COM  
WEBSITE: WWW.HAWS.CO.COM

ECN NO. 4250	REVISED PER ECN: 4553	BY VWC	MODEL(S)	PART NUMBER
DRAWN H. MERRITT	DATE 04/09/09	CHKD	5874SS/5874PB/5874PBF/VRK5874/PBA6/PBA7	0002077650
APPROVED	DATE			DRAWING NO. 15873A00
			SCALE: 1:1	REV 5
			DRAWING TYPE: PARTS BREAKDOWN	SHEET 1 OF 1