

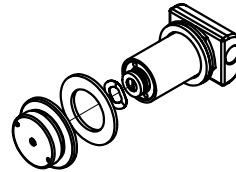
**5874PB**

POLISHED CHROME PLATED PUSH BUTTON WITH VALVE FOR RECESSED AND FLAT SURFACES.



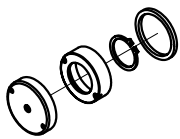
0003244389

NOT INCLUDED WITH VRK5874



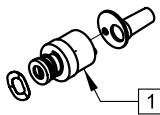
**5874PBF**

POLISHED CHROME PLATED FLANGED PUSH BUTTON WITH VALVE. FOR USE ON FOUNTAINS WITH FLUSH MOUNT PUSH BUTTONS.



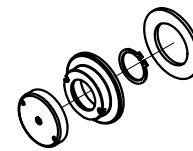
**PBA7**

POLISHED CHROME PLATED PUSH BUTTON FOR RECESSED AND FLAT SURFACES.



**VRK5874**  
VALVE REPAIR KIT

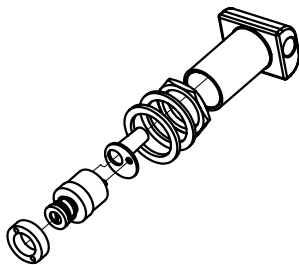
1



2 **PBA6/PBA6A**  
**PBA6HPB**

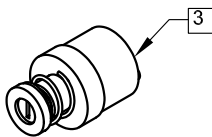
PBA6 - POLISHED CHROME PLATED FLANGED PUSH BUTTON ONLY.  
PBA6A - SAME AS PBA6 BUT WITH ANTIMICROBIAL COATING.  
PBA6HPB - HIGH POLISHED BRASS FLANGED PUSH BUTTON ONLY.

2



**5874 VALVE**

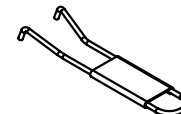
2



0001632151 3  
CARTRIDGE



0002568123  
GASKET W/SCREEN



0006983506  
SPANNER WRENCH  
(INCLUDED WITH MODELS:  
5874, 5874PB & 5874PBF)

**NOTES:**

- 1 CAUTION: USE ONLY HAWS CARTRIDGE ASSEMBLY PROVIDED WITH VRK5874 FOR PART REPLACEMENT TO ENSURE PROPER VALVE FUNCTION.
- 2 WHEN RETROFITTING PUSH BUTTON AND VALVE (AS A SET) ON GOLD PLATED FOUNTAINS USE PBA6HPB AND 5874 VALVE.
- 3 MODELS 1025/G, 3300/G & 3300.8 WHICH ARE ALSO EQUIPPED WITH A POP-UP BUBBLER (MODEL 5725) MUST UTILIZE A HIGH FLOW CARTRIDGE P/N 0001632151 AS REPLACEMENT.

REV	DESCRIPTION	ECN	DATE	BY/APVD
11	UPDATED PER ECN	4336	10/20/09	HM
REVISIONS				

**WHEN ORDERING PARTS PLEASE SPECIFY YOUR MODEL NUMBER**



1455 KLEPPE LANE  
SPARKS, NEVADA 89431  
(775) 359-4712 FAX (775) 359-7424  
E-MAIL: HAWS@HAWS.CO.COM  
WEBSITE: WWW.HAWS.CO.COM

DRAWN BY: MR	DATE: 11/04/02	CHECK BY:	APPVD BY:	SCALE: 1/1
TITLE: 5874/5874PB/5874PBF/VRK5874/PBA6/PBA6A/PBA6HPB/PBA7			PART NUMBER: 0002077535	
DRAWING TYPE: PARTS BREAKDOWN			DRAWING NUMBER: 0002077535	REV: 11