

**HAWS® WATER COOLER MODELS
HWUACP8, HWUACP8SS
INSTRUCTIONS**

A. INSPECTION

Inspect the carton and water cooler for evidence of rough handling and concealed damage. Damage claims should be filed with the carrier.

B. TO PUT WATER COOLER INTO SERVICE

1. **Note:** The following states require a licensed plumber to install cooler; AR, GA, MA, MI, OK, RI, SC, SD, TX, VT and WI. CA, KS, MN, NM and OR allow for a state-registered installer or contractor as well. State and local plumbing codes may prohibit the use of saddle tapping valves for water line connection in some applications. All connections must conform to applicable plumbing codes.
2. Locate and install plumbing and electrical service, if required, in accordance with the Roughing-in Drawing. Filter units have additional instructions on a label inside the access panel. Read these before installing unit.
3. **FLUSH BUILDING WATER SUPPLY LINE BEFORE INSTALLING UNIT.**
4. Install unit on the wall hanger. **Wall hanger is shipped fastened to the back of the unit.**
5. **Install a trap in the waste line and a shut off valve in the water supply line.** An in-line strainer is furnished in the "Water Supply" tube. Connect the "Water Supply" tube to the shut off valve. This connection should not be a solder joint or flare connection to allow access to the strainer for service. To ease removal of the strainer, a sheet metal screw may be lightly threaded into the open end. When the unit has an internal waste trap, the trap should be wrapped with insulating tape to prevent sweating. Use of the 1-3/4 diameter knockout for a waste line is not recommended because of a potential conflict with ADA* toe space clearance requirements. Check your local building code inspector for approval.
6. Rotate the fan blade by hand to see that it is free of obstructions.
7. Check the available power supply against the water cooler data plate to assure correct electrical service. Plug power supply cord into wall outlet. The rear most 1-3/8 diameter knockout in the frame bottom is for an externally located electrical supply. Make sure the knockout-hole edge is smooth and free of any burrs. Use of a Heyco bushing #2184 in the knockout-hole is recommended in order to prevent damage to the service cord and to close up excess opening around the cord. Route the cord so it does not interfere with ADA* space requirements.
8. To fill the cold water tank on water cooler versions, open the water supply-line shut-off, and push any one of the front or side pushbuttons to allow water to flow to the bubbler. Run water until stream is free of bubbles.
9. To adjust the bubbler stream; the pushbutton model is equipped with a cartridge regulator and has a slot in the shelf below the pushbuttons. Insert a screwdriver in this slot to adjust regulator. Turn adjustment clockwise to increase stream height.

C. MAINTENANCE

The only maintenance operation required is the removal of dirt and lint from the condenser where used. Inspection should be made at 3-month intervals. Disconnect the power supply cord; then clean the condenser with a small stiff non-wire or vacuum cleaner attachment brush when required. Observance of this procedure will insure adequate air circulation through the condenser so operation is efficient and economical.

D. OVERLOAD PROTECTION

The compressor motor, where used, is equipped with an automatic reset protector which will disconnect the motor from the line in case of an overload.

E. LUBRICATION

This unit is equipped with a hermetically sealed compressor and requires no additional lubrication. The fan motor, where used, on this unit seldom needs oiling, but, if required, a few drops of SAE 10 oil should be used.

F. TO DISCONTINUE USE OF WATER COOLER

1. Close water shut-off valve.
2. Provide container to catch water to be drained.
3. Disconnect the water supply line at the shut off valve and remove the tank drain plug. Actuate and hold in the pushbutton to open the solenoid valve and completely drain the cooler. Disconnect the power supply cord.
4. Replace plug when draining is complete.
5. **ALWAYS DRAIN ALL WATER WHEN FREEZING TEMPERATURES ARE ANTICIPATED AND BEFORE SHIPPING THE WATER COOLER.**

*Americans with Disabilities Act

WARNING

The warranty and the Underwriters' Laboratory Listing for this machine are automatically voided if this machine is altered, modified, or combined with any other machine or device. Alteration or modification of this machine may cause serious flooding and/or hazardous electrical shock or fire.



Haws Corporation
1455 Kleppe Lane • Sparks, Nevada 89431-6467
775-359-4712
www.hawsco.com

HAWS WATER COOLER LIMITED WARRANTY

PLEASE LEAVE THIS WARRANTY WITH OWNER

Haws Corporation (HAWS) warrants the water cooler, when installed in accordance with the installation instructions, against defects in material and workmanship as follows:

1. One (1) year from the date of installation or 18 months from date of shipment, whichever occurs first, HAWS will repair or replace any defective part which upon HAWS' sole determination is a result of defective material or workmanship.
2. In addition, HAWS will, for a further four (4) years, warrant the complete hermetically sealed refrigeration system which includes the compressor, evaporating coil, filter dryer, and condensing coil. This does not cover the hot tank, thermostat, fan, relay, overload or valve.

This warranty does not cover any damage due to accident, misuse, abuse, negligence, or any part of the water system if they have become fouled due to liming, dirt, unsatisfactory water conditions, of faulty plumbing.

Adjustment to the water stream and temperature, field service calls to replace or install parts, and unauthorized service work cannot be claimed under this warranty. Finish deterioration due to normal use or exposure is not covered by this warranty.

To obtain warranty service, you must call either the factory or an authorized service agent. For the nearest authorized service center or HAWS factory service, call (800) 766-5612.

This warranty is valid in continental United States and Canada only.

All coolers sold and/or shipped outside of the continental United States and Canada have a one (1) year warranty coverage on parts only. No extended warranty on the hermetically sealed refrigeration system is allowed.

OWNERS OBLIGATION

To pay for services not covered by this warranty such as minor adjustments to flow and temperature and diagnose for faults.

To prepay the freight to HAWS or authorized service center for any part or cooler returned under this warranty. To provide the cooler serial number when making claims as age can only be determined by this number.

MANUFACTURERS OBLIGATION

HAWS' obligation under this warranty is limited to repairing or replacing any part of the water cooler which, upon its examination, is found to be defective due to workmanship or material. Claims will not be accepted if serial nameplate is mutilated or removed.

Repair or replacement as provided under this warranty is the exclusive remedy of the user. HAWS shall not be liable for any incidental or consequential damages for breach of any express or implied warranty on this product. Except to the extent prohibited by applicable law, any implied warranty of merchantability or fitness for a particular purpose on this product is limited in duration to the duration of this warranty.

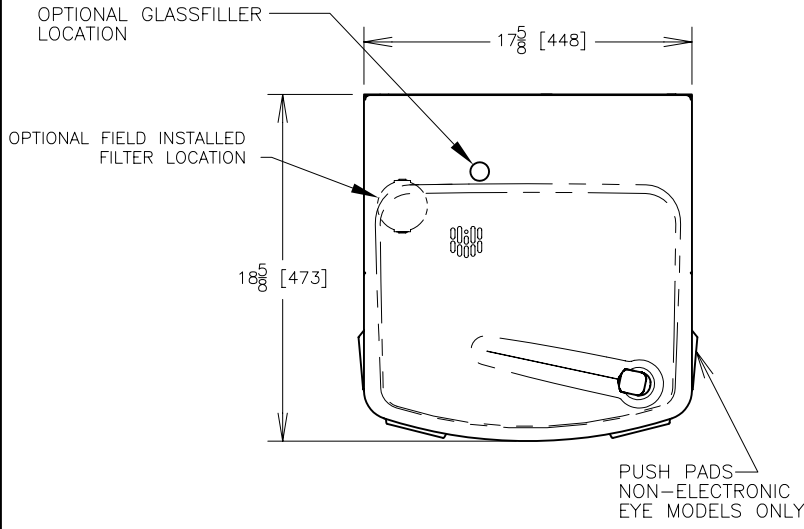
Some states do not allow the exclusion or limitation of incidental or consequential damages, or allow limitations on how long an implied warranty lasts, so the above limitations or exclusion may not apply to you. This warranty gives you specific legal rights, and you may also have other rights which vary from state to state.

Cooler Model Number: _____
Serial Number: _____
Date of Installation: _____
Location: _____
Building: _____
State: _____
Installed by: _____



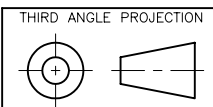
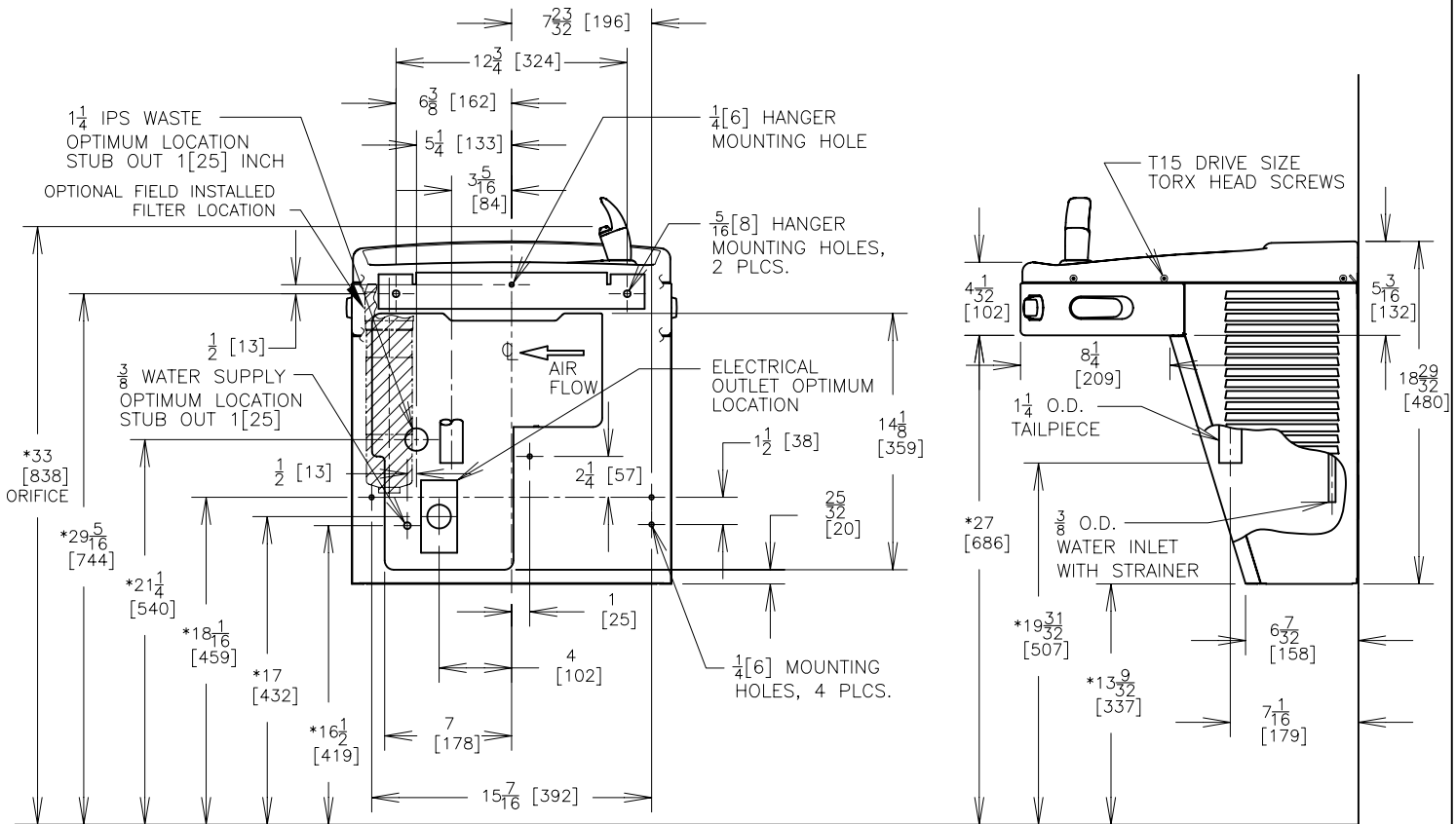
Haws Corporation
1455 Kleppe Lane
Sparks, Nevada 89431
800-766-5612

HAWS® WATER COOLER MODELS HWUACP8/HWUACP8SS



NOTES:

1. TRAP, STOP VALVE AND ELECTRICAL OUTLET NOT FURNISHED.
2. ALLOW 4 INCHES [102 MM] MIN. PER SIDE FOR VENTILATION.
- *3. RECOMMENDED ADULT BARRIER FREE HEIGHT INSTALLATION SHOWN. REDUCE HEIGHT BY 3 INCHES FOR INSTALLATIONS USED PRIMARILY BY CHILDREN AGES 12 AND YOUNGER. UNIT SHALL ALSO HAVE A MINIMUM CLEAR FLOOR SPACE 30[760] BY 48[1220]. ADJUST VERTICAL DIMENSIONS AS REQ'D TO COMPLY WITH FEDERAL, STATE, AND LOCAL CODES.
4. ALL DIMENSIONS ARE IN INCHES. DIMENSIONS IN BRACKETS [] ARE IN MILLIMETERS.



ROUGHING-IN AND DIMENSIONAL DRAWING