



**INSTALLATION, OPERATION
&
MAINTENANCE INSTRUCTIONS**

1455 Kleppe Lane ♦ Sparks, NV 89431-6467 ♦ (775) 359-4712 ♦ Fax (775) 359-7424
E-mail: haws@hawsco.com ♦ website: www.hawsco.com

No. 2080283(10)

**Model HWBFA8L.VRC
Water Cooler**

NOTE TO INSTALLER: Please leave this information with the Maintenance Department.

A ground-fault circuit breaker shall be installed in the branch circuit supplying fountain equipment. NEC680-51(a).

CAUTION! Prior to making any electrical connections, verify with a voltmeter that power from the service panel is **off**.

LIMITED WARRANTY

HAWS® warrants that all of its products are guaranteed against defective material or poor workmanship for a period of **one year from date of shipment**. HAWS liability under this warranty shall be discharged by furnishing without charge F.O.B. HAWS Factory any goods, or part thereof, which shall appear to the Company upon inspection to be of defective material or not of first class workmanship, provided that claim is made in writing to company within a reasonable period after receipt of the product. Where claims for defects are made, the defective part or parts shall be delivered to the Company, prepaid, for inspection. HAWS will not be liable for the cost of repairs, alterations or replacements, or for any expense connected therewith made by the owner or his agents, except upon written authority from HAWS, Sparks, Nevada. HAWS will not be liable for any damages caused by defective materials or poor workmanship, except for replacements, as provided above. Buyer agrees that Haws has made no other warranties either expressed or implied in addition to those above stated, except that of title with respect to any of the products or equipment sold hereunder and that HAWS shall not be liable for general, special, or consequential damages claimed to arise under the contract of sale. The drinking fountain manufactured by HAWS is warranted to function if installation and maintenance instructions provided are adhered to. The units also must be used for the purpose for which they were intended.

NO OTHER WARRANTIES EXPRESSED OR IMPLIED ARE AUTHORIZED, PROVIDED OR GIVEN BY HAWS.

SHOULD YOU EXPERIENCE DIFFICULTY WITH THE INSTALLATION OF THIS MODEL PLEASE CALL:

TECHNICAL SUPPORT: 1-800-766-5612

FOR CUSTOMER SERVICE: 1-888-640-4297

RECOMMENDED TOOLS: Hack saw, pipe joint sealant, screwdriver, level, 12" adjustable wrench, 10" pipe wrench, 5/32 " hex key wrench, 9/16", 1/2", 7/16" socket wrench or open end wrench.

SUPPLY LINE: The minimum recommended line size is 1/2"IPS with 30-90 psi (2-6 ATM) pressure. Where sediment or mineral content is a problem, an inlet filter is recommended.

PLUMBING CONNECTIONS: Inlet is 1/4" O.D. copper tubing. Waste bend is 1-1/4" O.D.

ELECTRICAL CONNECTIONS: 115VAC, 60HZ, 4.5 AMPS. Chiller wired direct to incoming line, by others.

TROUBLESHOOTING

PROBLEM	REPAIR CHECKLIST
1. Insufficient bubbler flow.	1a. Check that inlet screwdriver stop valve is in wide-open position. b. Verify minimum 30 psi flowing supply pressure. c. Clean strainer. See 5874 Valve Manual. d. Adjust valve to increase flow. Use front adjust screw or see 5874 Valve Manual.
2. Water too warm or cold.	2a. Adjust chiller temperature control, clockwise for colder water.

SAFETY PRECAUTIONS

- A. Do not allow water to come into contact with live electrical wires because short-circuiting and shocks can occur.
- B. **WARNING:** Beware of rotating fans when covers are removed.
- C. Care should be taken not to puncture refrigeration system lines. Some lines contain gas under high pressure.
- D. Install cooler to conform with all applicable codes, including the National Electrical Code.

INSTALLATION

STEP 1: WATER SUPPLY: Connecting lines must be thoroughly flushed to remove all dirt and debris before connection to the cooler.

STEP 2: ELECTRICAL CONNECTIONS: Check first to make sure electrical (supply) voltage is the same as shown on the cooler serial nameplate, If not the same, do not connect to the electrical supply because major damage could result.

The water cooler must be protectively grounded. Make sure the supply connection is provided with a protective grounded wire. Do not use the cooler if ground wire is not connected.

Connect the cooler only by the lead provided. Do not wire direct to the compressor.

STEP 3: VENTILATION: To maintain proper ventilation and correct function of the water cooler a 4" clearance is required on each side of the cooler louvers. **Failure to comply could cause the compressor to fail and therefore void the warranty.**

STEP 4: INSTALLATION OF COOLER: The drawings provided with these instructions show the cooler dimensions, location of all the required services and mounting instructions. The installer is responsible for providing the drain shut off valve.

STEP 5: CONDENSER FAN: Before plugging unit into electrical supply make sure fan rotates freely. **Failure to check free fan movement can cause compressor failure, voiding the warranty.**

STEP 6: ADJUSTMENTS: The water flow cartridge and thermostat are set at the factory. Adjustments, if required, should be done in accordance with these instructions (Maintenance) and by a trained technician.

MAINTENANCE

STEP 1: GENERAL: Any work carried out inside the cabinet (once front panel is removed) must be done by a qualified technician who is aware of the hazards.

STEP 2: MAINTENANCE: For appearance and hygiene, it is recommended that the top and cabinet be cleaned regularly with a mild cleaning agent. Keep the air flow vents clean and free from paper, debris and dust to assure good operation.

STEP 3: The chiller temperature control is factory set for 45°F water under normal conditions. For colder water, adjust control clockwise. For warmer water, turn counterclockwise. Remove front chiller panel for access to temperature control. After adjustment allow unit to cycle off before checking outlet water temperature.

STEP 4: Periodically clean the screen located inside the 5874 valve body. See 5874 Valve Manual for accessing screen instructions.

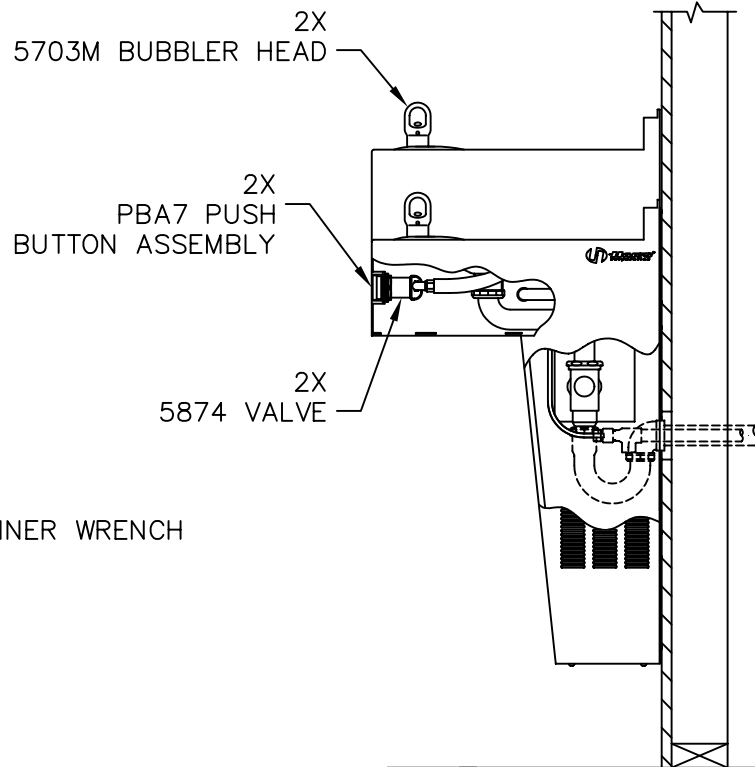
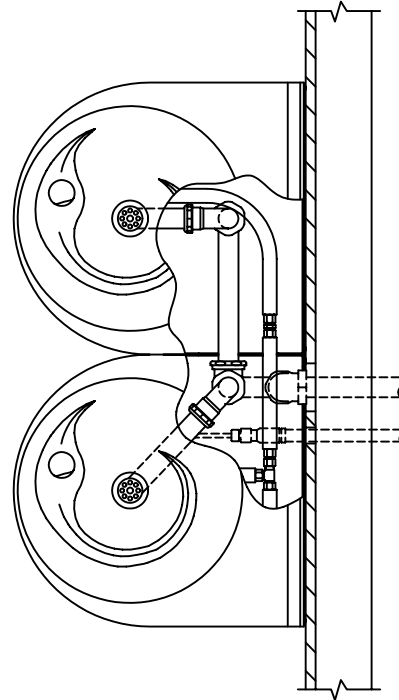
STEP 5: The condenser fins on chiller should be periodically cleaned with brush, air hose or vacuum cleaner. Care should be taken not to bend or deform the condenser fins.

STEP 6: STORAGE OF COOLER: If location of cooler is such that it is subjected to freezing temperature, care should be taken to completely drain the drinking water storage chamber.

For more information about Haws products, see our website: www.hawscow.com

© 2010 Haws® Corporation – All Rights Reserved
HAWS® and other trademarks used in these materials are the exclusive property of Haws Corporation.

PARTS BREAKDOWN

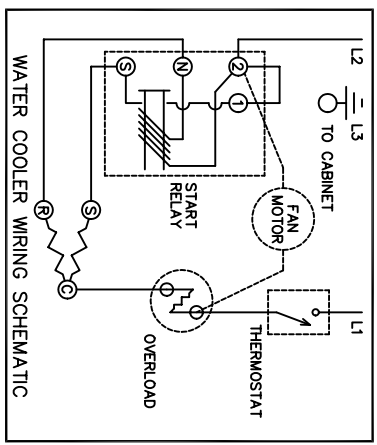
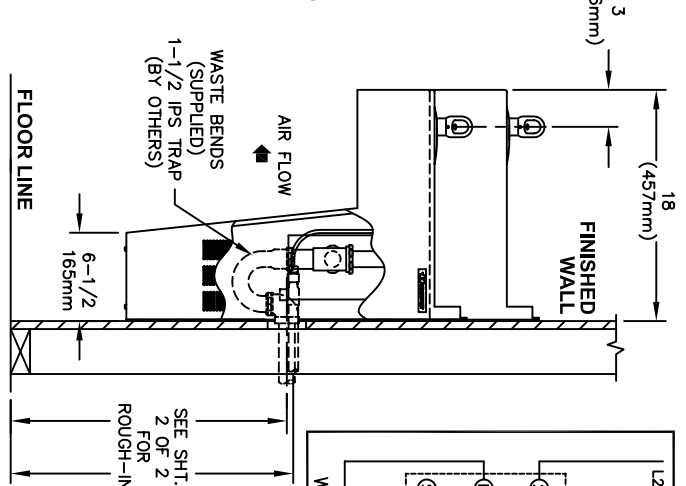
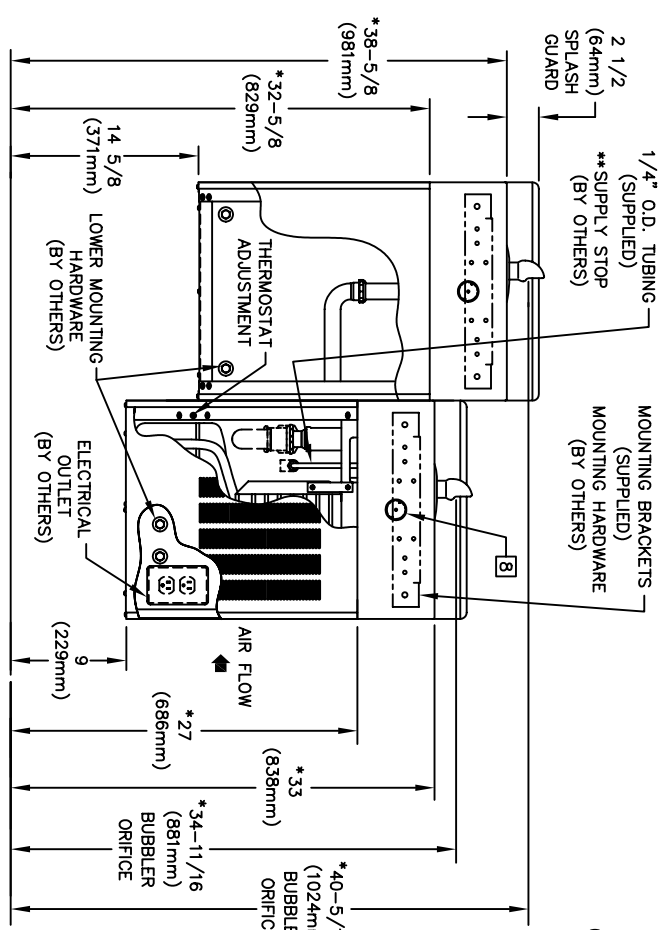
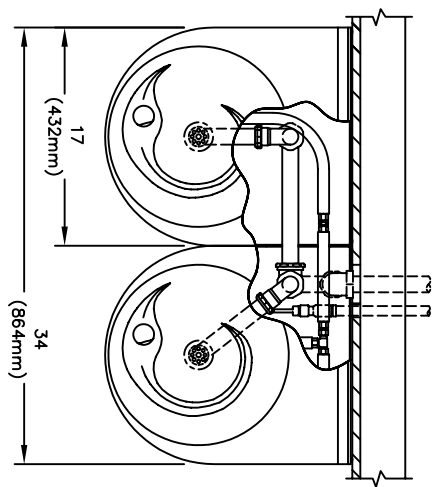


**WHEN ORDERING
PARTS PLEASE
SPECIFY YOUR
MODEL NUMBER**



1455 KLEPPE LANE
SPARKS, NEVADA 89431
(775) 359-4712 FAX (775) 359-7424
E-MAIL: HAWS@HAWSO.COM
WEBSITE: WWW.HAWSO.COM

DRAWN BY: RTM	DATE: 10/26/98	CHECK BY:	APPRD BY:	SCALE: 1/6
TITLE: HWBFA8L.VRC			PART NUMBER: 0002080283	
DRAWING TYPE: PARTS BREAKDOWN			DRAWING NUMBER: 13802C00	REV. 10



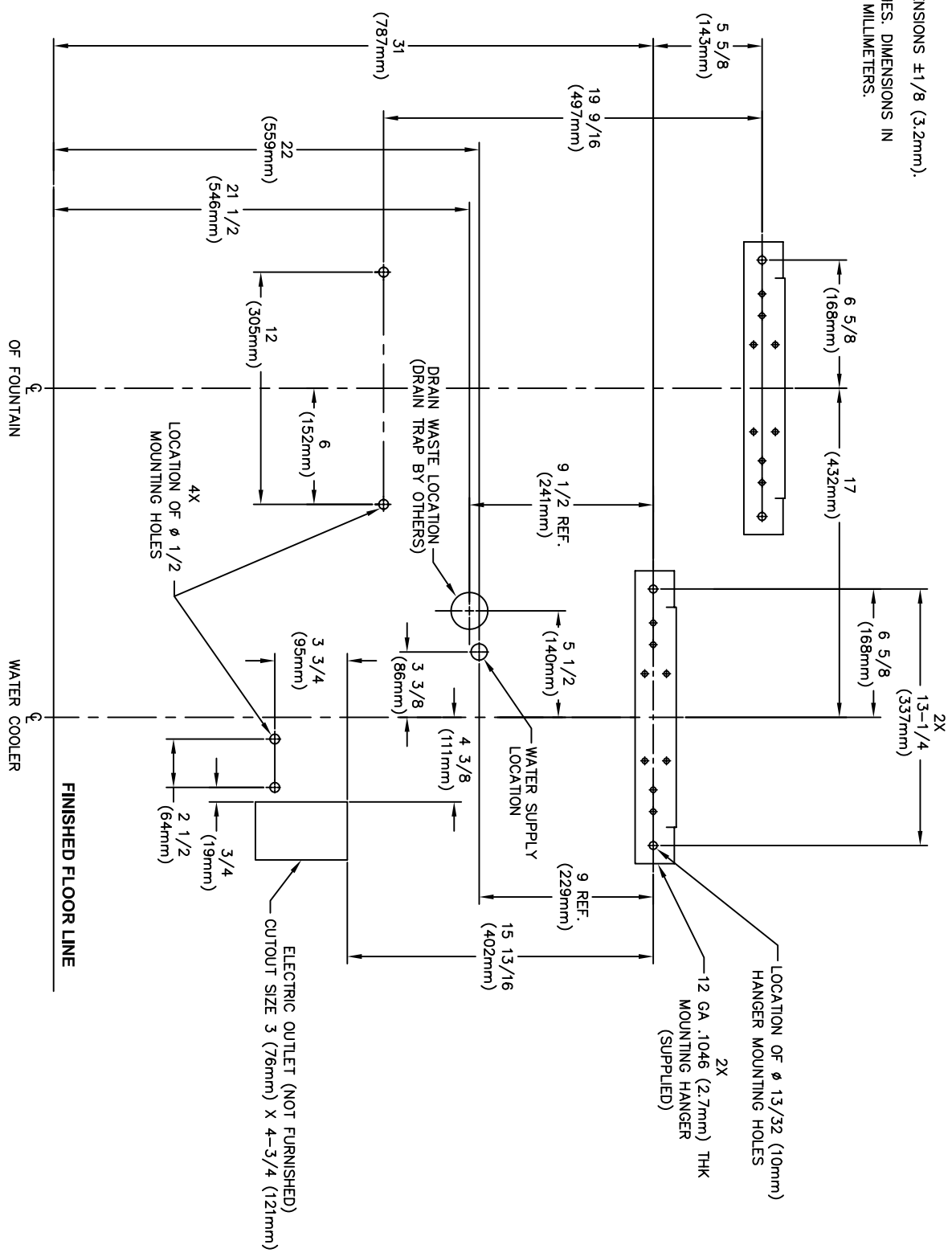
- NOTES:**
1. HOLD ROUGH-IN DIMENSIONS ± 1/8" (3.2mm).
 2. **WHEN INSTALLING THIS UNIT, LOCAL, STATE, OR FEDERAL CODES SHOULD BE ADHERED TO. FOR INSTALLATION HEIGHTS OTHER THAN SHOWN, DIMENSIONS MARKED (*) MUST BE ADJUSTED ACCORDINGLY.
 3. DIMENSIONS ARE IN INCHES. DIMENSIONS IN PARENTHESES ARE IN MILLIMETERS.
 4. ALLOW 4 INCHES (102mm) MINIMUM CLEARANCE FOR VENTILATION.

Haws Corporation

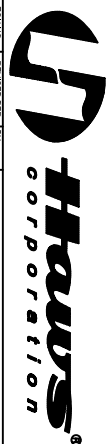
1455 KLEPPE LANE
SPARKS, NEVADA 89431
(775) 359-4712 FAX (775) 359-7424
E-MAIL: HAWS@HAWS.CO.COM
WEBSITE: WWW.HAWS.CO.COM

EXCISE NO. _____ PART NO. _____ RTM _____ APPROVED _____	MODEL(S): HWBFABL VRC INFO FAX DOC # 24925872	ORDER TYPE _____ INSTALLATION/PACKAGE _____	ORDER NO. _____ DATE _____ QUANTITY _____ SHEET 1 OF 2
---	--	--	---

NOTES:
 HOLD ROUGH-IN DIMENSIONS ±1/8" (3.2mm).
 DIMENSIONS ARE INCHES. DIMENSIONS IN PARENTHESIS ARE IN MILLIMETERS.



ROUGH-IN LOCATIONS FOR HWBFA8L VRC



1455 KLEPPE LANE
 SPARKS, NEVADA 89431
 (775) 359-4712 FAX (775) 359-7424
 E-MAIL: HAWS@HAWS.CO.COM
 WEBSITE: WWW.HAWS.CO.COM

EQ# NO.:	10998	DATE:	10/98	APPROVED:	
DESIGNED BY:	HHL	CHKD:		DATE:	
MODELS:	HWBFA8L VRC	INFO FAX DOC#:	24925872	INSTALLATION/FABR/CAC:	
ORDER NO.:	002080283 D	REV:	10	DATE:	
SIZE:	A	SHEET:	2	OF:	2