



## INSTALLATION, OPERATION & MAINTENANCE INSTRUCTIONS

1455 Kleppe Lane ♦ Sparks, NV 89431-6467 ♦ (775) 359-4712 ♦ Fax (775) 359-7424  
E-mail: [haws@hawsco.com](mailto:haws@hawsco.com) ♦ website: [www.hawsco.com](http://www.hawsco.com)

### Model HCR8; HCR8.50 Water Cooler

#### LIMITED WARRANTY

Haws Corporation (HAWS) warrants the water cooler, when installed in accordance with the installation instructions, against defects in material and workmanship as follows:

1. One (1) year from the date of installation or 18 months from date of shipment, whichever occurs first, HAWS will repair or replace any defective part which upon HAWS' sole determination is a result of defective material or workmanship.
2. In addition, HAWS will, for a further four (4) years, warrant the complete hermetically sealed refrigeration system which includes the compressor, evaporating coil, filter dryer, and condensing coil. This does not cover the hot tank, thermostat, fan, relay, overload or capacitors.

This warranty does not cover any damage due to accident, misuse, abuse, negligence, or any part of the water system if they have become fouled due to liming, dirt, unsatisfactory water conditions, of faulty plumbing.

Adjustment to the water stream and temperature, field service calls to replace or install parts, and unauthorized service work cannot be claimed under this warranty. Finish deterioration due to normal use or exposure is not covered by this warranty.

To obtain warranty service, you must call either the factory or an authorized service agent. For the nearest authorized service center or HAWS factory service, call **(800) 766-5612**.

This warranty is valid in continental United States and Canada only.

All coolers sold and/or shipped outside of the continental United States and Canada have a one (1) year warranty coverage on parts only. No extended warranty on the hermetically sealed refrigeration system is allowed.

#### OWNERS OBLIGATION

To pay for services not covered by this warranty such as minor adjustments to flow and temperature and diagnose for faults.

To prepay the freight to HAWS or authorized service center for any part or cooler returned under this warranty. To provide the cooler serial number when making claims as age can only be determined by this number.

#### MANUFACTURERS OBLIGATION

HAWS' obligation under this warranty is limited to repairing or replacing any part of the water cooler which, upon its examination, is found to be defective due to workmanship or material. Claims will not be accepted if serial nameplate is mutilated or removed.

Repair or replacement as provided under this warranty is the exclusive remedy of the user. HAWS shall not be liable for any incidental or consequential damages for breach of any express or implied warranty on this product. Except to the extent prohibited by applicable law, any implied warranty of merchantability or fitness for a particular purpose on this product is limited in duration to the duration of this warranty.

Some states do not allow the exclusion or limitation of incidental or consequential damages, or allow limitations on how long an implied warranty lasts, so the above limitations or exclusion may not apply to you. This warranty gives you specific legal rights, and you may also have other rights which vary from state to state.

**NOTE TO INSTALLER:** Please leave this information with the Maintenance Department.

**Haws electric water cooler's are not designed or recommended for outdoor or corrosive environments such as enclosed chlorinated pool areas. Consideration must be made at the time of installation to adhere to state and/or local codes and environmental/atmospheric conditions such as, but not limited to, dust, corrosion, freezing etc. These conditions will void the warranty.**

**CAUTION!** Prior to making any electrical connections, verify with a voltmeter that power from the service panel is **off**.

**NOTICE:** This water cooler must be connected to the water supply using a dielectric coupling.

**IMPORTANT! INSTALLER PLEASE NOTE**

The grounding of electrical equipment such as telephone, computers, etc., to water lines is a common procedure. This grounding may be in the building, or may occur away from the building. This grounding can cause electrical feedback into a water chiller, creating an electrolysis which causes a metallic taste or an increase in the metal content of the water. This condition is avoidable by using the proper materials indicated under Installation Section.

**SAFETY PRECAUTIONS**

- A. Do not allow water to come into contact with live electrical wires because short-circuiting and shocks can occur.
- B. **WARNING:** Beware of rotating fans when covers are removed.
- C. Care should be taken not to puncture refrigeration system lines. Some lines contain gas under high pressure.
- D. Install cooler to conform to all applicable codes, including the National Electrical Code.

**SHOULD YOU EXPERIENCE DIFFICULTY WITH THE INSTALLATION OF THIS MODEL PLEASE CALL:**

**TECHNICAL SUPPORT: 1-800-766-5612**

**FOR CUSTOMER SERVICE: 1-888-640-4297**

## INSTALLATION

- STEP 1:** When mounting unit in an open area, to insure proper ventilation, maintain a 4" (102mm) clearance from cabinet louvers on each side of cooler. When mounting unit in a cavity or behind a wall maintain minimum space of 4" (102mm) on each side, 4" (102mm) on the top and a depth of 12" (305mm).
- STEP 2:** Water inlet is 1/4" (6mm) O.D. tube. Contractor to supply the connections as required.
- STEP 3:** Connecting lines to be of unplated copper, thoroughly flushed to remove all foreign matter before being connected to cooler. If flushing does not remove all particles, a water strainer should be installed in supply line. This cooler is manufactured in such a manner that it does not in any way cause taste, odor, color or sediment problems.
- STEP 4:** Connect cooler to building supply line with a shut-off valve and install the in-line strainer between the valve and cooler.
- STEP 5: Electrical:** HCR8 (115V/60HZ/5.0 AMPS) and HCR8.50 (220V/50HZ/2.0 AMPS). Make sure power supply is identical in voltage, cycle, and phase to that specified on cooler serial plate. Never wire compressor directly to the power supply.
- STEP 6:** This chiller has been designed for use with potable water **ONLY**.

## START-UP

- STEP 1:** Open supply line valve.
- STEP 2:** Purge air from all water lines by operating bubbler valve of fountain to which cooler is connected. Steady stream assures all air is removed.
- STEP 3:** Rotate fan to insure proper clearance and free fan action.
- STEP 4:** Connect to electrical power.

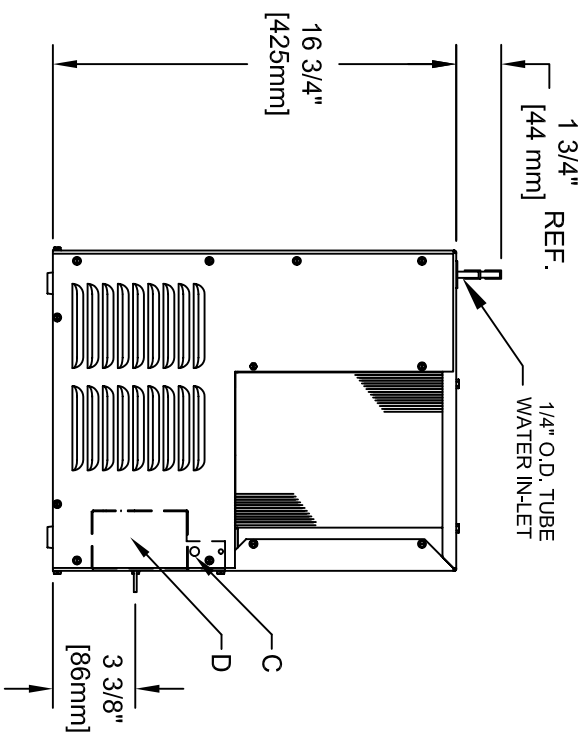
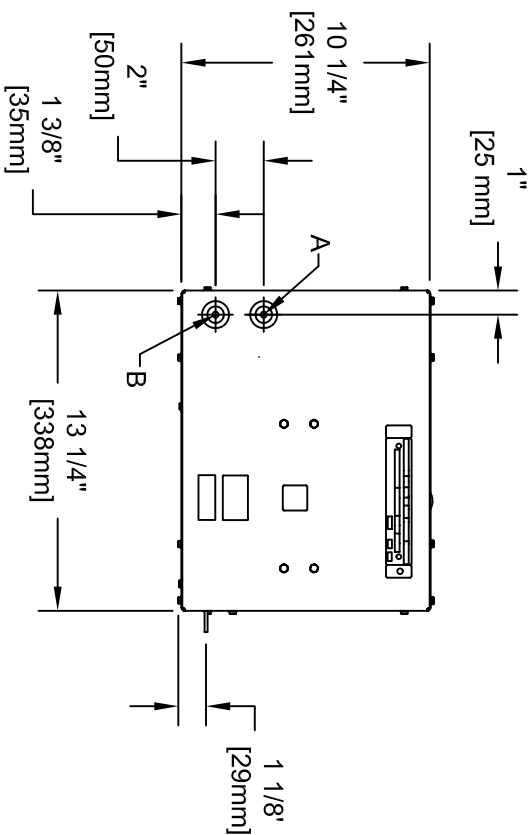
## TROUBLESHOOTING & MAINTENANCE

**TEMPERATURE CONTROL:** Factory set at 50°F (±5°) under normal conditions. For colder water, adjust screw on item no. 12 in clockwise direction.

**VENTILATION:** Cabinet louvers and condenser fins should be periodically cleaned with brush, air hose or vacuum cleaner. Excess dirt or poor ventilation can cause no cold water and compressor cycling on the compressor overload protector.

**LUBRICATION:** Motors are lifetime lubricated.

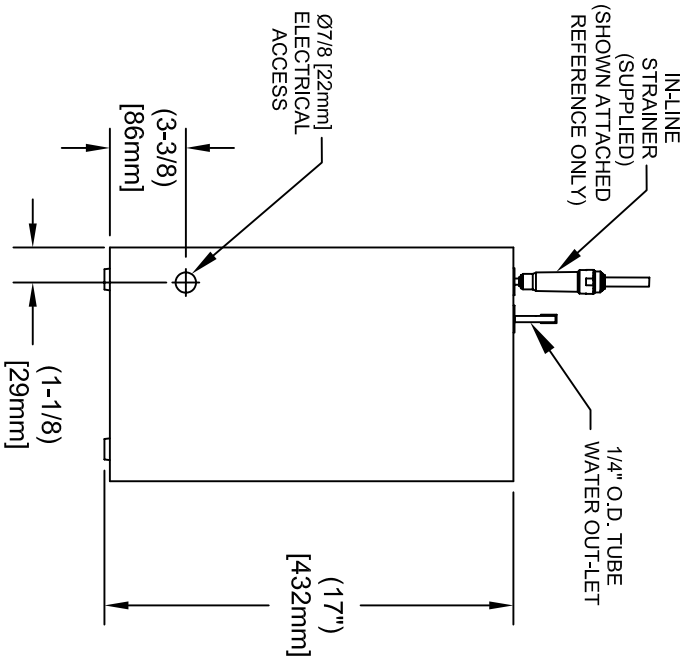
**Actuation of Quick Connect Water Fittings:** Cooler is provided with lead-free connectors which utilize an O-ring seal. To remove tubing from the fittings, relieve water pressure; push in on gray collar while pulling on the tubing. To insert tubing, push tube straight into fitting until it reaches a positive stop, approximately 3/4".



LEGEND

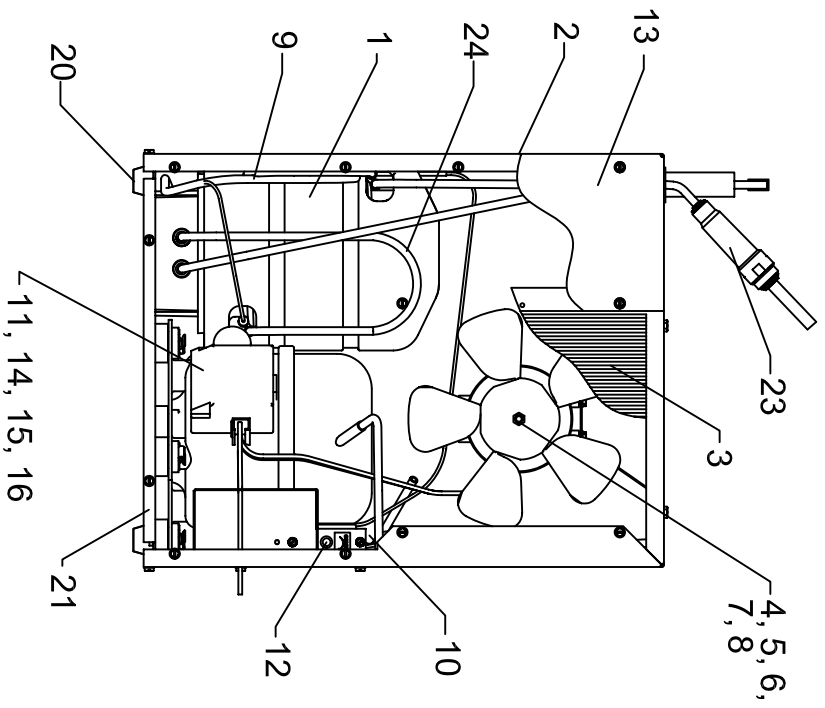
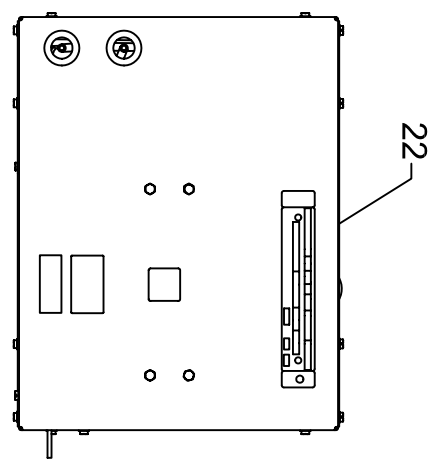
- A = 1/4" O.D. TUBE WATER OUTLET
- B = 1/4" O.D. TUBE WATER INLET
- C = TEMPERATURE ADJUSTMENT
- D = ELECTRICAL

- NOTES:
1. ALLOW 4 INCHES [102mm] PER SIDE FOR VENTILATION.
  2. IT IS RECOMMENDED THAT ALL WATER OUTLETS BE NOT MORE THAN 7 FEET FROM THE CHILLER AND ALL COLD WATER PIPING BE COVERED WITH SPONGE RUBBER OR ICE WATER TYPE INSULATION OF ADEQUATE THICKNESS.
  3. MAKE SURE POWER SUPPLY IS IDENTICAL IN VOLTAGE, CYCLE, AND PHASE TO THAT SPECIFIED ON THE COOLER SERIAL PLATE. NEVER WIRE COMPRESSOR DIRECTLY TO POWER SUPPLY.
  4. MODEL NUMBERS AS LISTED ON UNITS:  
 FOR HCR8: HCR8\*1J (115V, 60HZ, 5 AMPS)  
 FOR HCR8.50: HCR8\*2J (220V, 50HZ, 2 AMPS)



1455 KLEPPE LANE  
 SPARKS, NEVADA 89431  
 (775) 359-4712 FAX (775) 359-7424  
 EMAIL: HAWS@HAWS.CO.COM  
 WEBSITE: WWW.HAWSCO.COM

EQUIV. NO. REVISED PER BY:	MODEL(S)	PART NUMBER	DRAWING NO.:
4403	HCR8 (115V)/HCR8.50 (220V)	0002075001.1.D	15352A00.1.5
DRAWN: [REDACTED]	DATE: [REDACTED]	APPROVED: [REDACTED]	DATE: [REDACTED]
REMOTE CHILLER		DRAWING TYPE: INSTALLATION	
SCALE: 1/8"		SIZE: A SHEET 1 OF 3	



**HCR8 115V/60HZ/5 AMPs ITEMIZED PARTS LIST**

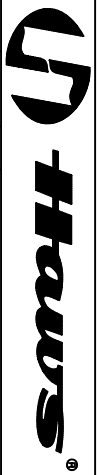
ITEM	PART NO.	DESCRIPTION
1	66543C	EVAPORATOR TANK ASSY
2	28478C	CABINET
3	66743C	CONDENSER
4	31490C	MOTOR - FAN 115V
5	20282C	BRACKET - FAN MOUNTING
6	30664C	BLADE - FAN
7	70018C	NUT - FAN BLADE
8	56237C	SHROUD - FAN
9	66576C	HEAT EXCHANGER
10	66703C	DRIER
11	36094C	COMPRESSOR SERVICE PAK
12	31513C	COLD CONTROL
13	28477C	PANEL - FRONT
14	35768C	COVER - RELAY
15	36158C	OVERLOAD
16	35959C	RELAY
17	100806740570	GROMMET
18	101516143550	STUD - COMP. MOUNTING
19	19037000	CLIP
20	50930C	BUMPER
21	27303C	BASEPLATE
22	22300C	PANEL - REAR
23	55996C	IN-LINE STRAINER
24	66723C	EVAPORATOR TUBE

**HCR8.50 220V/50HZ/2 AMPs**

ITEM	PART NO.	DESCRIPTION
4	31430C	MOTOR - FAN 220V
9	66576C	HEAT EXCHANGER
11	36085C	COMPRESSOR SERVICE PAK
15	36195C	OVERLOAD
16	36050C	RELAY

**\*INCLUDES RELAY AND OVERLOAD. IF UNDER WARRANTY, REPLACE WITH SAME COMPRESSOR USED IN ORIGINAL ASSEMBLY.**

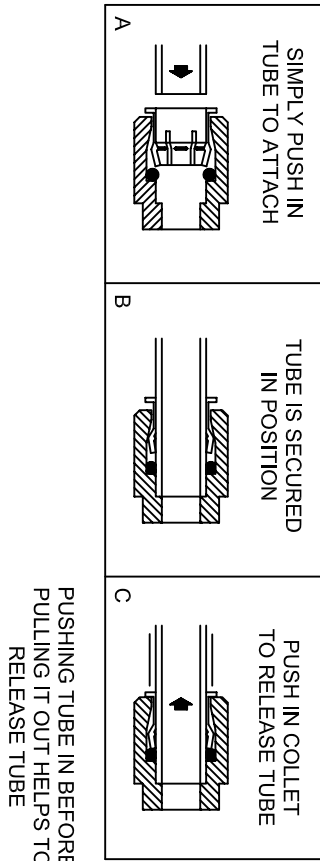
**NOTE: ALL CORRESPONDENCE PERTAINING TO ANY OF THE ABOVE WATER COOLER OR ORDERS FOR REPAIR MUST INCLUDE MODEL NUMBER AND SERIAL NUMBER OF COOLER, NAME AND NUMBER OF REPLACEMENT PART.**



1455 KLEPPE LANE  
SPARKS, NEVADA 89431  
(775) 359-4712 FAX (775) 359-7424  
EMAIL: HAW@HAWSCO.COM  
WEBSITE: WWW.HAWSCO.COM

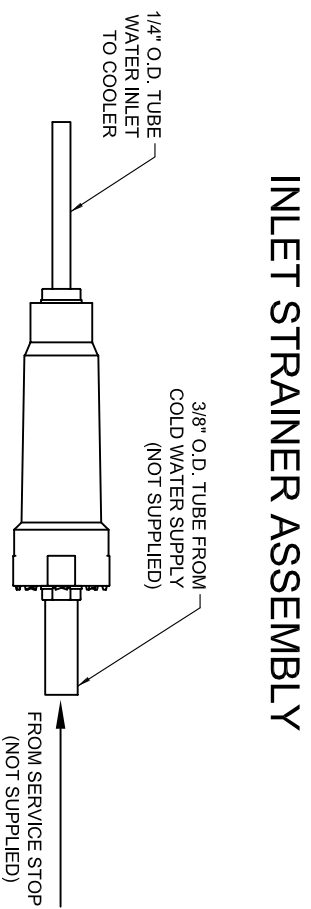
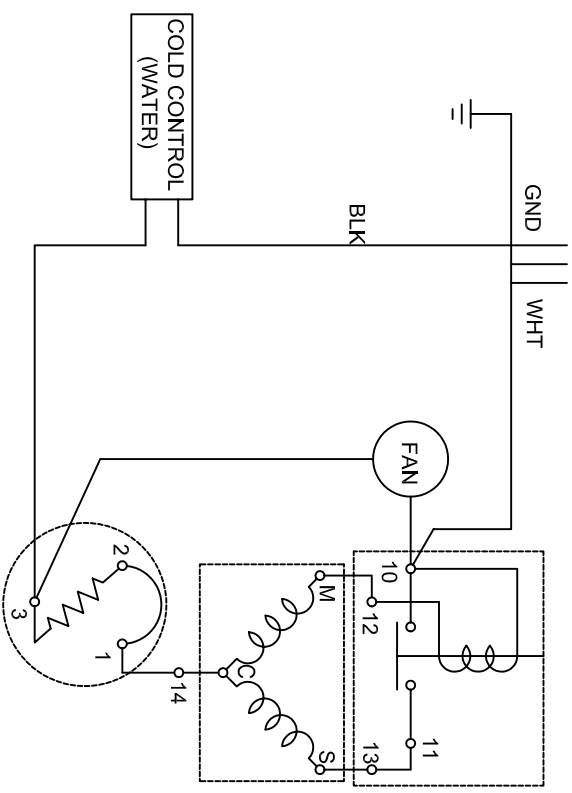
EON NO. REVISED PER BY:	MODEL(S)	PART NUMBER
4403	HCR8 (115V)/HCR8.50 (220V)	0002075001.1D
DRAWN: [Signature]	DATE: [Date]	DRAWING NO.: 15352A00
CHKD: [Signature]	DATE: [Date]	REV: 5
APPROVED: [Signature]	SCALE: 1:1	DRAWING TYPE: INSTALLATION
		SHEET 2 OF 3

# OPERATION OF QUICK CONNECT FITTINGS

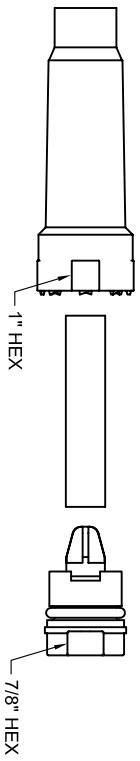


## WIRING DIAGRAM

THIS DRAWING IS FOR ILLUSTRATING THE COMPONENTS OF THE ELECTRICAL SYSTEM ONLY



NOTE: WATERFLOW DIRECTION



RESTRICTED WATER FLOW MAY BE CAUSED BY CLOGGED SCREEN. REMOVE PLUG AND SCREEN. CLEAN SCREEN AND REPLACE. LUBRICATE O-RING WITH FOOD GRADE PHARMACEUTICAL MINERAL OIL. DO NOT OVERTIGHTEN PLUG OR FITTINGS.



EQN NO: 4403	REVISED PER BY: HCR	MODEL(S): HCR8 (115V)/HCR8.50 (220V)	PART NUMBER: 0002075001.1.D
DATE: 4/27/10	CHKD: HCR	SCALE: 3/1	DRAWING NO.: 15352A00.1.5
DATE: 4/27/10	DATE: 4/27/10	DRAWING TYPE: INSTALLATION	REV: 5
APPROVED: [Signature]	DATE: [Blank]	SIZE: A	SHEET: 3 OF 3

1455 KLEPPE LANE  
SPARKS, NEVADA 89431  
(775) 359-4712 FAX (775) 359-7424  
EMAIL: HAW@HAWSCO.COM  
WEBSITE: WWW.HAWSCO.COM