



INSTALLATION, OPERATION & MAINTENANCE INSTRUCTIONS

1455 Kleppe Lane ♦ Sparks, NV 89431-6467 ♦ (775) 359-4712 ♦ Fax (775) 359-7424
E-mail: haws@hawsco.com ♦ website: www.hawsco.com

No. 2077535(11)

5874/5874PB/5874PBF/VRK5874/PBA6/PBA6A/ PBA6HPB/PBA7 Valve/Push-Button

NOTE TO INSTALLER: Please leave this information with the Maintenance Department.

LIMITED WARRANTY

HAWS® warrants that all of its products are guaranteed against defective material or poor workmanship for a period of **one year from date of shipment**. HAWS liability under this warranty shall be discharged by furnishing without charge F.O.B. HAWS Factory any goods, or part thereof, which shall appear to the Company upon inspection to be of defective material or not of first class workmanship, provided that claim is made in writing to company within a reasonable period after receipt of the product. Where claims for defects are made, the defective part or parts shall be delivered to the Company, prepaid, for inspection. HAWS will not be liable for the cost of repairs, alterations or replacements, or for any expense connected therewith made by the owner or his agents, except upon written authority from HAWS, Sparks, Nevada. HAWS will not be liable for any damages caused by defective materials or poor workmanship, except for replacements, as provided above. Buyer agrees that Haws has made no other warranties either expressed or implied in addition to those above stated, except that of title with respect to any of the products or equipment sold hereunder and that HAWS shall not be liable for general, special, or consequential damages claimed to arise under the contract of sale. The drinking fountain manufactured by HAWS is warranted to function if installation and maintenance instructions provided are adhered to. The units also must be used for the purpose for which they were intended.

NO OTHER WARRANTIES EXPRESSED OR IMPLIED ARE AUTHORIZED, PROVIDED OR GIVEN BY HAWS.

**SHOULD YOU EXPERIENCE DIFFICULTY WITH THE INSTALLATION OF THIS MODEL,
PLEASE CALL:**

1-800-766-5612

FOR PARTS CALL:

1-800-758-9378

**(U.S.A. AND CANADA ONLY) MONDAY-THURSDAY: 6:00 A.M. – 4:00 P.M. PST
FRIDAY: 6:00 A.M – 1:00 P.M. PST**

Note:

1. Before removing valve, strainer or cartridge assembly, shut off water supply line.
2. This valve is pressure compensating. Be sure to remove any existing flow control devices.
3. When retrofitting an existing fountain with a 5874 series assembly:
 - a). Remove any in-line strainer that may be present in the supply line,
 - b). Reconnect tubing to new valve using supplied or existing fittings.
4. Valve is directional. Verify flow direction indicated on valve when installing.

Caution: Valve must be protected by the 60-mesh strainer LOCATED INSIDE VALVE BODY.

Warranty void if 60-mesh strainer IS REMOVED FROM VALVE BODY.

OPERATION & MAINTENANCE OF FRONT ACCESS FEATURES

FLOW ADJUSTMENT: A 3/16" hole in the center of this button is provided for front access to the adjustment screw found on the cartridge assembly. While pushing the button in and using a slotted narrow blade screwdriver, the flow may be adjusted by inserting it into the hole and turning clockwise for increased flow, and counterclockwise for decreased flow.

STRAINER CLEANING: Periodically clean the strainer **located inside valve body**. Remove front push-button and retaining nut with the universal spanner wrench provided. Pull cartridge assembly out. Gently remove strainer off of cartridge. Thoroughly flush away any debris from strainer. While keeping bottom of cartridge clean of debris, re-attach strainer by aligning larger hole opening on gasket over the larger water inlet opening on the cartridge. Insert cartridge assembly back into valve body, by aligning screen into large opening inside bottom of valve body. Ensure cartridge has bottomed out, by slightly turning into place. Retighten retaining nut and check for leaks.

CARTRIDGE ASSEMBLY REPLACEMENT: Remove front push-button and retaining nut with the universal spanner wrench provided. Pull cartridge assembly out. Gently remove strainer off of old cartridge and reassemble on new cartridge (see strainer reattachment instructions above). Insert cartridge assembly into valve body by aligning screen into large opening inside bottom of valve body. Ensure cartridge has bottomed out, by turning slightly into place. Retighten retaining nut and check for leaks.

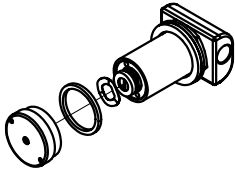
CAUTION: When replacing strainer or cartridge assembly, damage can occur if not properly re-installed. Read instructions carefully.

PUSH BUTTON ASSEMBLY/REASSEMBLY

Must apply 1 Dot of Loctite 222MS Threadlocker on female threads of push-button. See page 5 of 5 for proper application procedure.

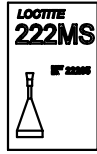
TROUBLESHOOTING

PROBLEM	REPAIR CHECKLIST	
1. Insufficient bubbler flow.	1a.	Check that the inlet screwdriver stop is in wide open position.
	b.	Adjust bubbler stream height. See Flow Adjustment instructions in Front Access Feature Box.
	c.	Verify flow direction indicated on valve.
	d.	Shut off screwdriver stop, clean the fine mesh strainer found inside the 5874 valve. See Strainer Cleaning instructions in Front Access Feature Box.
	e.	Verify minimum 30 psi flowing supply pressure.
	f.	Shut off screwdriver stop and replace cartridge assembly. See Cartridge Assembly Replacement instructions in Front Access Feature Box.
2. Bubbler flow too high.	2a.	See Step 1b above.
3. Valve won't shut off completely.	3a.	Cycle the cartridge assembly by pushing the push-button 5 times to clear any foreign matter (if any is present) from the valve seat.
	3b.	Shut off screwdriver stop replace cartridge assembly. See Cartridge Assembly Replacement instructions in Front Access Feature Box.
4. No flow out of valve.	4a.	Check that the inlet screwdriver stop is in wide open position.
	b.	Verify flow direction indicated on valve.
	c.	Check strainer for possible clogging (see 1d above).
5. Inconsistent bubbler stream height.	5a.	See 1d above
6. Button is loose	6a.	Refer to Installation Drawing (page 5 of 5) for proper application of Threadlocker 222MS and assembly procedure.
7. Water is leaking out of push button assembly.	7a.	Remove push button with spanner wrench (P/N 0006983506) and tighten retaining nut using same spanner wrench.
	b.	If leak persist, shut off screwdriver stop and replace cartridge assembly. See Cartridge Assembly Replacement instructions in Front Access Feature Box.



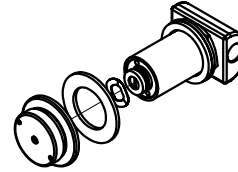
5874PB

POLISHED CHROME PLATED PUSH BUTTON WITH VALVE FOR RECESSED AND FLAT SURFACES.



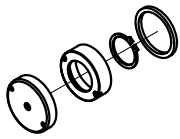
0003244389

NOT INCLUDED WITH VRK5874



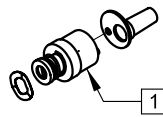
5874PBF

POLISHED CHROME PLATED FLANGED PUSH BUTTON WITH VALVE. FOR USE ON FOUNTAINS WITH FLUSH MOUNT PUSH BUTTONS.



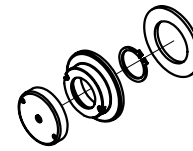
PBA7

POLISHED CHROME PLATED PUSH BUTTON FOR RECESSED AND FLAT SURFACES.



VRK5874
VALVE REPAIR KIT

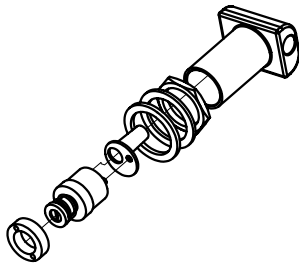
1



PBA6/PBA6A
PBA6HPB

PBA6 - POLISHED CHROME PLATED FLANGED PUSH BUTTON ONLY.
PBA6A - SAME AS PBA6 BUT WITH ANTIMICROBIAL COATING.
PBA6HPB - HIGH POLISHED BRASS FLANGED PUSH BUTTON ONLY.

2



5874 VALVE

2

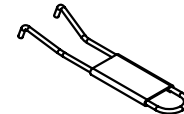


0001632151
CARTRIDGE

3



0002568123
GASKET W/SCREEN



0006983506
SPANNER WRENCH
(INCLUDED WITH MODELS:
5874, 5874PB & 5874PBF)

NOTES:

- 1 CAUTION: USE ONLY HAWS CARTRIDGE ASSEMBLY PROVIDED WITH VRK5874 FOR PART REPLACEMENT TO ENSURE PROPER VALVE FUNCTION.
- 2 WHEN RETROFITTING PUSH BUTTON AND VALVE (AS A SET) ON GOLD PLATED FOUNTAINS USE PBA6HPB AND 5874 VALVE.
- 3 MODELS 1025/G, 3300/G & 3300.8 WHICH ARE ALSO EQUIPPED WITH A POP-UP BUBBLER (MODEL 5725) MUST UTILIZE A HIGH FLOW CARTRIDGE P/N 0001632151 AS REPLACEMENT.

REV	DESCRIPTION	ECN	DATE	BY/APVD
11	UPDATED PER ECN	4336	10/20/09	HM
REVISIONS				

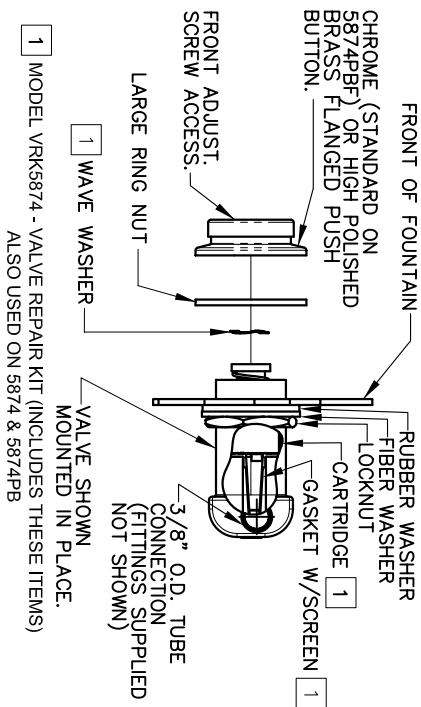
WHEN ORDERING PARTS PLEASE SPECIFY YOUR MODEL NUMBER



1455 KLEPPE LANE
SPARKS, NEVADA 89431
(775) 359-4712 FAX (775) 359-7424
E-MAIL: HAWS@HAWS.CO.COM
WEBSITE: WWW.HAWS.CO.COM

DRAWN BY: MR	DATE: 11/04/02	CHECK BY:	APPVD BY:	SCALE: 1/1
TITLE: 5874/5874PB/5874PBF/VRK5874/PBA6/PBA6A/PBA6HPB/PBA7			PART NUMBER: 0002077535	
DRAWING TYPE: PARTS BREAKDOWN			DRAWING NUMBER: 0002077535	REV. 11

SEE WEBSITE FOR CARTRIDGE AND GASKET REMOVAL INSTRUCTIONS
IF YOU DO NOT HAVE 5874 OWNERS MANUAL AVAILABLE.



1 MODEL VPK5874 - VALVE REPAIR KIT (INCLUDES THESE ITEMS)
ALSO USED ON 5874 & 5874PB

INSTALLATION INSTRUCTIONS FOR 5874PBF

- 1.) INSERT VALVE INTO FOUNTAIN FROM INSIDE.
- 2.) THREAD LARGE RING NUT ONTO VALVE BODY, APPROX. 1" INTO VALVE.
- 3.) PLACE WAVE WASHER INSIDE OF FLANGED PUSH-BUTTON ASSY.
- 4.) APPLY ONE (1) DOT OF LOCTITE 222MS, ON THE FEMALE THREADS OF BUTTON ASSEMBLY, LEAVING THE FIRST AND LAST THREADS FREE. (FIGURE1). CAUTION: EXCESS LOCTITE CAN CAUSE THREADS TO LOCK VERY TIGHTLY, MAKING REPAIRS DIFFICULT.
- 5.) THREAD FLANGED PUSH-BUTTON ASSY. ON VALVE UNTIL WAVE WASHER MAKES CONTACT WITH STEM OF CARTRIDGE. CAUTION: DO NOT HAND TIGHTEN.
- 6.) UNTHREAD LARGE RING NUT FORWARD, UNTIL IT STOPS FLUSH WITH FLANGED PUSH-BUTTON ASSY.
- 7.) PUSH VALVE BACK TOWARD THE INSIDE OF FOUNTAIN AND TIGHTEN LOCK NUT. (SEE ILLUSTRATION ABOVE.)
- 8.) TIGHTEN FLANGED PUSH-BUTTON ASSY. USING UNIVERSAL SPANNER WRENCH PROVIDED.

*APPLY 1 DOT OF LOCTITE 222MS

*THIS ALSO APPLIES TO PBA6 AND PBA6HPB

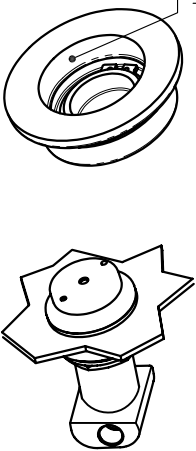
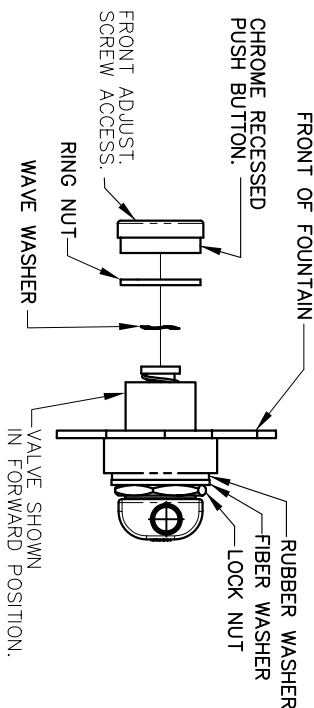


FIGURE 1 ASSEMBLED 5874PBF



INSTALLATION INSTRUCTIONS FOR 5874PB

- 1.) VERIFY THAT LOCK NUT, FIBER AND RUBBER WASHERS ARE AT BOTTOM OF VALVE.
- 2.) INSERT VALVE INTO FOUNTAIN FROM INSIDE, AND PUSH FORWARD (SEE ILLUSTRATION ABOVE).
- 3.) THREAD RING NUT ONTO VALVE BODY, AS FAR AS POSSIBLE TOWARDS FRONT OF FOUNTAIN.
- 4.) PLACE WAVE WASHER INSIDE OF FLANGED PUSH-BUTTON ASSY.
- 5.) APPLY ONE (1) DOT OF LOCTITE 222MS, ON THE FEMALE THREADS OF BUTTON ASSEMBLY, LEAVING THE FIRST AND LAST THREADS FREE. (FIGURE 2). CAUTION: EXCESS LOCTITE CAN CAUSE THREADS TO LOCK VERY TIGHTLY, MAKING REPAIRS DIFFICULT.
- 6.) THREAD PUSH-BUTTON ASSY. ON VALVE UNTIL WAVE WASHER MAKES CONTACT WITH STEM OF CARTRIDGE. CAUTION: DO NOT HAND TIGHTEN.
- 7.) UNTHREAD RING NUT FORWARD, UNTIL IT STOPS FLUSH WITH PUSH-BUTTON ASSY.
- 8.) PUSH VALVE BACK TOWARD THE INSIDE OF FOUNTAIN AND TIGHTEN LOCK NUT. (SEE ILLUSTRATION ABOVE.)
- 9.) TIGHTEN PUSH-BUTTON ASSY. USING UNIVERSAL SPANNER WRENCH PROVIDED.

*APPLY 1 DOT OF LOCTITE 222MS

*THIS ALSO APPLIES TO PBA7

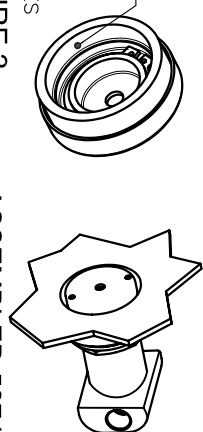


FIGURE 2 ASSEMBLED 5874PB



1455 KLEPPE LANE
SPARKS, NEVADA 89431
(775) 359-4712 FAX (775) 359-7424
E-MAIL: HAWS@HAWS.CO.COM
WEBSITE: WWW.HAWS.CO.COM

EQ# NO.:	1110402	MODEL(S):	5874/5874PB/5874PBF/VK5874/PBA6/PBA6HPB/PBA7	PO#:	0002077535 D
DATE:	11/04/02	INFO FAX DOC #:	258724/258742	SIZE:	1 OF 1
APPROVER:		SCALE:	AS IS	DATE:	11/11/02
		DESIGNER:		SIZE:	A
		INSTALLATION/EXAC:		SHEET:	1 OF 1