



INSTALLATION, OPERATION & MAINTENANCE INSTRUCTIONS

1455 Kleppe Lane ♦ Sparks, NV 89431-6467 ♦ (775) 359-4712 ♦ Fax (775) 359-7424
HAWS AG ♦ Bachweg 3 ♦ CH-3401 Burgdorf ♦ Switzerland
Haws Mfg. Pte Lt. ♦ 2A Sungei Kadet Drive ♦ Singapore 729554
Avlis-Avenida Senador, Testonio Vilela ♦ 505 Jardim Aeroporto ♦ Itu, S.P. 13304-550 ♦ Brasil
E-mail: haws@hawsco.com ♦ website: www.hawsco.com

No. 2081885(3)

Model 5054EG EnviroGard™ Faucet

NOTE TO INSTALLER: Please leave this information with the Maintenance Department.

LIMITED WARRANTY

HAWS® warrants that all of its products are guaranteed against defective material or poor workmanship for a period of **one year from date of shipment**. HAWS liability under this warranty shall be discharged by furnishing without charge F.O.B. HAWS Factory any goods, or part thereof, which shall appear to the Company upon inspection to be of defective material or not of first class workmanship, provided that claim is made in writing to company within a reasonable period after receipt of the product. Where claims for defects are made, the defective part or parts shall be delivered to the Company, prepaid, for inspection. HAWS will not be liable for the cost of repairs, alterations or replacements, or for any expense connected therewith made by the owner or his agents, except upon written authority from HAWS, Sparks, Nevada. HAWS will not be liable for any damages caused by defective materials or poor workmanship, except for replacements, as provided above. Buyer agrees that Haws has made no other warranties either expressed or implied in addition to those above stated, except that of title with respect to any of the products or equipment sold hereunder and that HAWS shall not be liable for general, special, or consequential damages claimed to arise under the contract of sale. The drinking fountain manufactured by HAWS is warranted to function if installation and maintenance instructions provided are adhered to. The units also must be used for the purpose for which they were intended.

NO OTHER WARRANTIES EXPRESSED OR IMPLIED ARE AUTHORIZED, PROVIDED OR GIVEN BY HAWS.

SHOULD YOU EXPERIENCE DIFFICULTY WITH THE INSTALLATION OF THIS MODEL, PLEASE CALL:

1-800-766-5612

FOR PARTS CALL:

1-800-758-9378

**(U.S.A. AND CANADA ONLY) MONDAY-THURSDAY: 6:00 A.M. – 4:00 P.M. PST
FRIDAY: 6:00 A.M – 1:00 P.M. PST**

RECOMMENDED TOOLS: Pipe joint sealant, 6" adjustable wrench, 3/32" hex key, 0.038 tip dia. internal / external (convertible) retaining ring pliers.

SUPPLY LINE: The minimum recommended line size is 1/2" IPS, with 30-90 psi (2-6 ATM) pressure. Where sediment or mineral content in water is a problem, an inlet filter is recommended.

PLUMBING CONNECTIONS: Inlet is 1/2" slip joint.

Note:

1. Do not use any thread sealant on nozzle threads (see page 4 of 4).

INSTALLATION PROCEDURE

Refer to Installation Drawing for details (page 4 of 4).

CAUTION: DO NOT FLUSH SYSTEM WITH NOZZLE IN PLACE.

Step 1: IMPORTANT: After the water supply is connected to the valve, remove nozzle assembly using retaining ring pliers (see page 4 of 4 for details) and thoroughly flush system. Failure to do so may cause premature clogging of flow control.

Note: lift the cover up then turn the valve on to purge all the air out of the system.

MAINTENANCE

Head disassembly instructions:

Step 1: Remove bubbler head from faucet.

Step 2: Remove base and unscrew shank from bottom of head.

Step 3: Using two 3/32" hex keys (not supplied) proceed to separate the cover from the shaft/float assembly.

Step 4: Slide out shaft/float assembly from head and if needed unscrew shaft from washer float assembly.

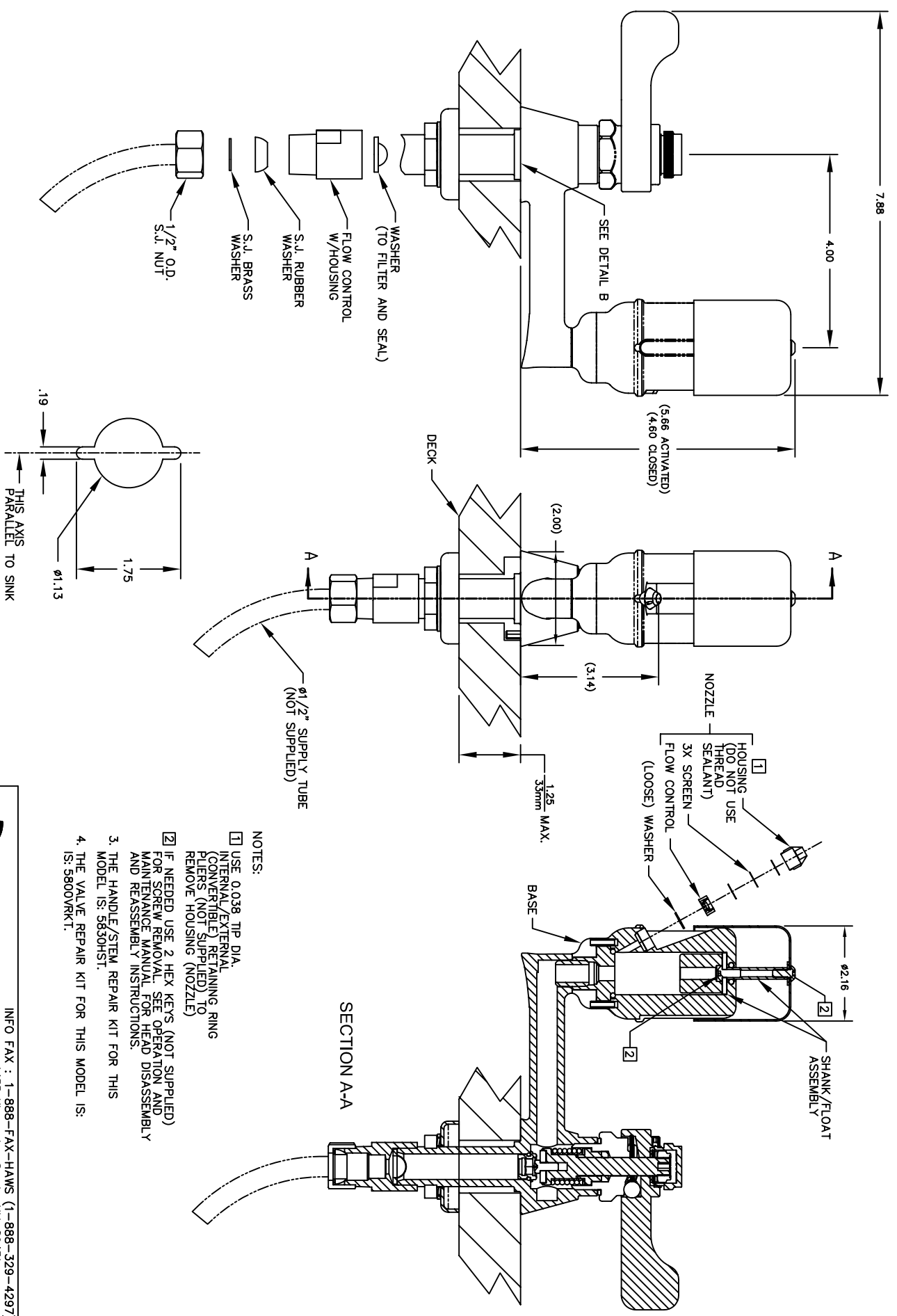
Step 5: Replace damaged components as needed and carefully reassemble them in reverse order as described in the Head Reassembly Instructions.

Head reassembly instructions:

Note: make sure housing is free of any debris before and during assembly process:

- Step 1:** Apply a 360° bead of Loctite #243 (available from Haws P/N 0003244389) onto threads of cover screw (leaving the first thread free) and insert screw through top of cover. Flip cover upside down (while keeping screw in place) and place the stainless steel washer onto screw.
- Step 2:** Insert shaft/float assembly through bottom of head and up through opening in top of head.
- Step 3:** Flip head upside down and insert into (inverted) cover while still holding screw in place (This self-aligning step facilitates assembling screw into shaft). Screw shaft/float assembly to cover until screw stops. Do not tighten.
- Step 4:** Flip assembly upright and slide cover up and down to check for smooth operation. If everything works fine, proceed to hold cover down and tighten cover screw. (Only use one hex key for this step).
- Step 5:** Screw in the shank making sure that O-ring is in place and slide the base to bottom of head.
- Step 6:** Refer to installation procedure (page 2 of 4) before and after proceeding to assemble head to faucet.

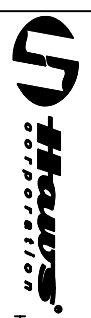
TROUBLESHOOTING	
PROBLEM	REPAIR CHECKLIST
1. Insufficient bubbler flow.	<ul style="list-style-type: none">a. Check that inlet screwdriver stop valve (not supplied) is in wide-open position.b. Verify minimum 30 psi flowing supply pressure.c. Adjust flow rate on push button/lever handle valve.d. Check for debris in filter (if present) and clean out.e. Check for debris in nozzle by removing with snap ring pliers (Note: use 0.038 tip dia. internal / external (convertible) retaining ring pliers, not supplied). If dirty, remove flow control and screens by inserting a small (3/16" dia. max.) blunt object through the nozzle orifice and pushing outward. Be careful not to damage screens or lose any components. Flush system thoroughly before reassembling nozzle. Reassemble exactly as shown on Installation Drawing. Note orientation of flow control (end with four small opening facing screens).
2. Excessive bubbler flow	<ul style="list-style-type: none">a. Adjust flow rate on push button/lever handle valve.b. Make sure washer is present beneath nozzle.
3. Cover sticks	<ul style="list-style-type: none">a. Spin around a few times and cycle through a few times to release any debris caught between parts.
4. Cover or shaft assembly gets damaged.	<ul style="list-style-type: none">a. See 'head disassembly' instructions under maintenance heading.



- NOTES:
- 1 USE 0.038 TIP DIA. INTERNAL/EXTERNAL (CONVERTIBLE) RETAINING RING PLIERS (NOT SUPPLIED) TO REMOVE HOUSING (NOZZLE)
 - 2 IF NEEDED USE 2 HEX KEYS (NOT SUPPLIED) FOR SCREW REMOVAL. SEE OPERATION AND MAINTENANCE MANUAL FOR HEAD DISASSEMBLY AND REASSEMBLY INSTRUCTIONS.
 - 3. THE HANDLE/STEM REPAIR KIT FOR THIS MODEL IS: 3630HST.
 - 4. THE VALVE REPAIR KIT FOR THIS MODEL IS: 3600VRKT.

DETAIL B
MOUNTING HOLE

SECTION A-A



INFO FAX : 1-888-FAX-HAWS (1-888-329-4297)

1455 Kleppe Ln, Sparks NV, 89431

Phone: 775-359-4712 Fax: 775-359-7424

Haws Ag Bockweg 3 CH-3401 Burgdorf Switzerland

Haws Mfg Pte Ltd 74 Sungai Kadut Loop Singapore 729531

e-mail: Haws@hawsco.com website: www.hawsco.com

FORM NO.	REVISED PER	DATE	MODEL
3610	12/09/03	5054EG	STENVIROGUARD™ DRINKING FAUCET
APPROVED:	DATE:	SCALE:	DRAWING TYPE:
		1:3	INSTALLATION/EXHIBIT
PART NUMBER:	0002081885.D		
DRAWING NUMBER:	15213A00		
SIZE:	A	SHT:	1 OF 1