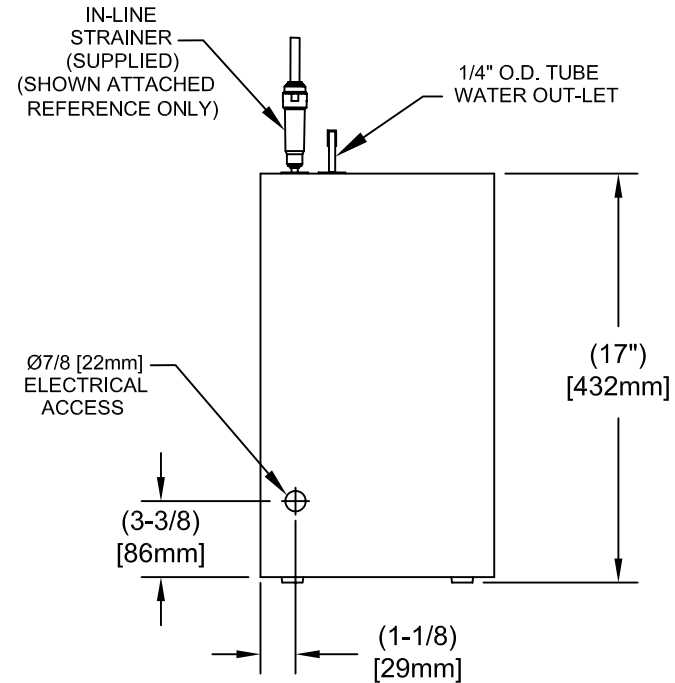



LEGEND

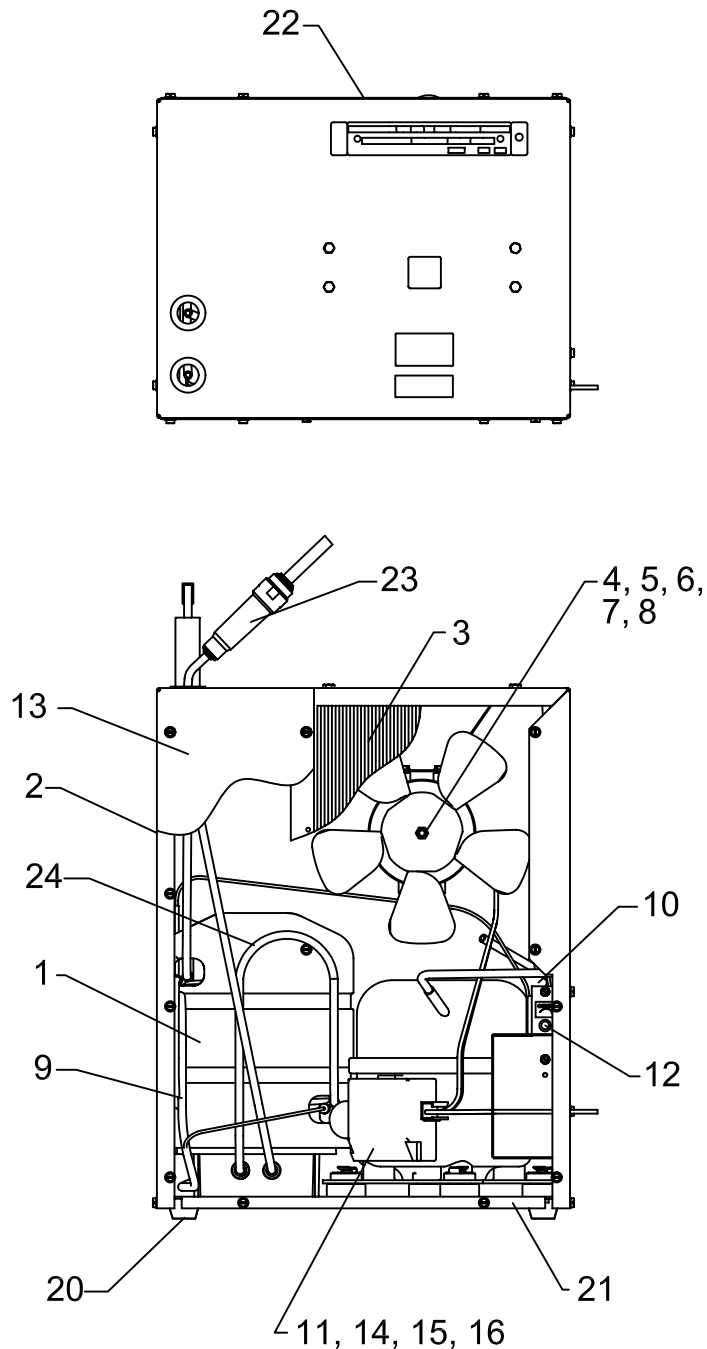
- A = 1/4" O.D. TUBE WATER OUTLET
- B = 1/4" O.D. TUBE WATER INLET
- C = TEMPERATURE ADJUSTMENT
- D = ELECTRICAL

NOTES:

1. ALLOW 4 INCHES [102mm] PER SIDE FOR VENTILATION.
2. IT IS RECOMMENDED THAT ALL WATER OUTLETS BE NOT MORE THAN 7 FEET FROM THE CHILLER AND ALL COLD WATER PIPING BE COVERED WITH SPONGE RUBBER OR ICE WATER TYPE INSULATION OF ADEQUATE THICKNESS.
3. MAKE SURE POWER SUPPLY IS IDENTICAL IN VOLTAGE, CYCLE, AND PHASE TO THAT SPECIFIED ON THE COOLER SERIAL PLATE. NEVER WIRE COMPRESSOR DIRECTLY TO POWER SUPPLY.
4. MODEL NUMBERS AS LISTED ON UNITS:  
FOR HCR8: HCR8\*1J (115V, 60HZ, 5 AMPS)  
FOR HCR8.50: HCR8\*2J (220V, 50HZ, 2 AMPS)



|   |  |   |   |
|---|--|---|---|
|  |  | 1455 KLEPPE LANE<br>SPARKS, NEVADA 89431<br>(775) 359-4712 FAX (775) 359-7424<br>E-MAIL: HAWS@HAWS.CO.COM<br>WEBSITE: WWW.HAWS.CO.COM |   |
|   |  | ECN NO. 4403<br>DRAWN: H. MERRITT<br>APPROVED:  | REVISED PER: BY: HM<br>ECN: 4217<br>DATE: 06/08/10<br>CHKD: |
| SCALE: 1:8  |  | DRAWING TYPE: INSTALLATION  | SIZE: A SHEET 1 OF 3  |



### HCR8 115V/60HZ/5 AMPS ITEMIZED PARTS LIST

| ITEM | PART NO.     | DESCRIPTION            |
|------|--------------|------------------------|
| 1    | 66543C       | EVAPORATOR TANK ASSY   |
| 2    | 28478C       | CABINET                |
| 3    | 66743C       | CONDENSER              |
| 4    | 31490C       | MOTOR - FAN 115V       |
| 5    | 20282C       | BRACKET - FAN MOUNTING |
| 6    | 30664C       | BLADE - FAN            |
| 7    | 70018C       | NUT - FAN BLADE        |
| 8    | 56237C       | SHROUD - FAN           |
| 9    | 66576C       | HEAT EXCHANGER         |
| 10   | 66703C       | DRIER                  |
| * 11 | 36094C       | COMPRESSOR SERVICE PAK |
| 12   | 31513C       | COLD CONTROL           |
| 13   | 28477C       | PANEL - FRONT          |
| 14   | 35768C       | COVER - RELAY          |
| 15   | 36158C       | OVERLOAD               |
| 16   | 35959C       | RELAY                  |
| 17   | 100806740570 | GROMMET                |
| 18   | 101516143550 | STUD - COMP. MOUNTING  |
| 19   | 19037000     | CLIP                   |
| 20   | 50930C       | BUMPER                 |
| 21   | 27303C       | BASEPLATE              |
| 22   | 22300C       | PANEL - REAR           |
| 23   | 55996C       | IN-LINE STRAINER       |
| 24   | 66723C       | EVAPORATOR TUBE        |

### HCR8.50 220V/50HZ/2 AMPS

| ITEM | PART NO. | DESCRIPTION            |
|------|----------|------------------------|
| 4    | 31430C   | MOTOR - FAN 220V       |
| 9    | 66576C   | HEAT EXCHANGER         |
| * 11 | 36085C   | COMPRESSOR SERVICE PAK |
| 15   | 36195C   | OVERLOAD               |
| 16   | 36050C   | RELAY                  |

**\*INCLUDES RELAY AND OVERLOAD. IF UNDER WARRANTY, REPLACE WITH SAME COMPRESSOR USED IN ORIGINAL ASSEMBLY.**

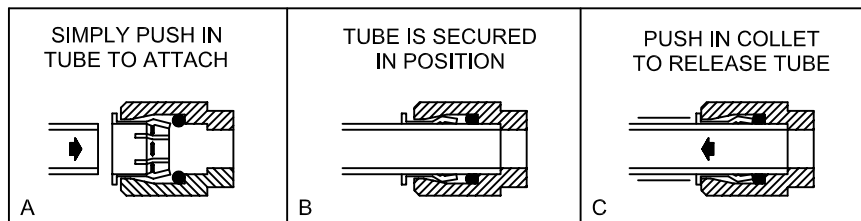
NOTE: ALL CORRESPONDENCE PERTAINING TO ANY OF THE ABOVE WATER COOLER OR ORDERS FOR REPAIR **MUST** INCLUDE MODEL NUMBER AND SERIAL NUMBER OF COOLER, NAME AND NUMBER OF REPLACEMENT PART.



1455 KLEPPE LANE  
SPARKS, NEVADA 89431  
(775) 359-4712 FAX (775) 359-7424  
E-MAIL: HAWS@HAWS.CO.COM  
WEBSITE: WWW.HAWS.CO.COM

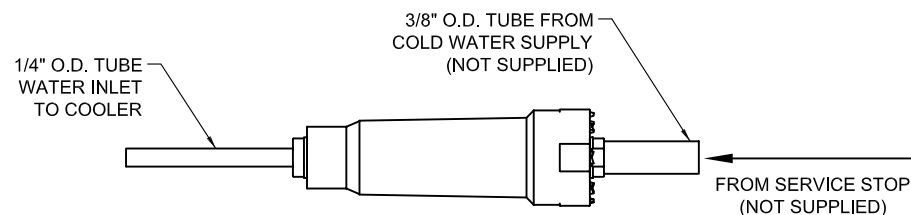
|  |                            |                                 |
|--|----------------------------|---------------------------------|
| ECN NO. REVISED PER BY:<br>4403 ECN: 4217 HM | MODEL(S)                   | PART NUMBER:                    |
| DRAWN: DATE: 06/08/10<br>HM                  | HCR8 (115V)/HCR8.50 (220V) | 0002075001.D                    |
| APPROVED: DATE:                              | REMOTE CHILLER             | DRAWING NO.: REV.<br>15352A00 5 |
| SCALE: 1:1                                   | DRAWING TYPE: INSTALLATION | SIZE: A SHEET 2 OF 3            |

## OPERATION OF QUICK CONNECT FITTINGS

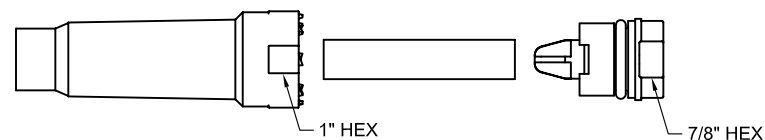


PUSHING TUBE IN BEFORE PULLING IT OUT HELPS TO RELEASE TUBE

## INLET STRAINER ASSEMBLY



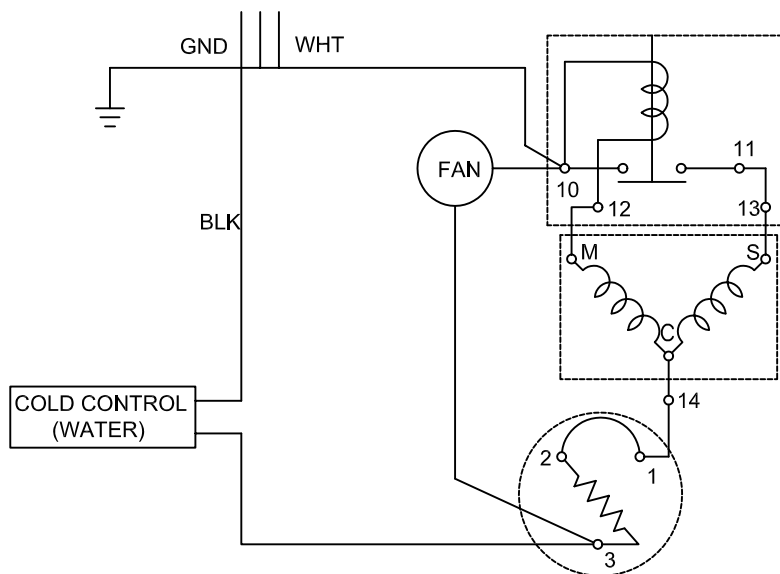
NOTE: WATERFLOW DIRECTION



RESTRICTED WATER FLOW MAY BE CAUSED BY CLOGGED SCREEN. REMOVE PLUG AND SCREEN. CLEAN SCREEN AND REPLACE. LUBRICATE O-RING WITH FOOD GRADE PHARMACEUTICAL MINERAL OIL. DO NOT OVERTIGHTEN PLUG OR FITTINGS.

## WIRING DIAGRAM

THIS DRAWING IS FOR ILLUSTRATING THE COMPONENTS OF THE ELECTRICAL SYSTEM ONLY



|              |                    |   |                       |
|--------------|--------------------|---|-----------------------|
|              |                    | 1455 KLEPPE LANE<br>SPARKS, NEVADA 89431<br>(775) 359-4712 FAX (775) 359-7424<br>E-MAIL: HAWS@HAWS.CO.COM<br>WEBSITE: WWW.HAWS.CO.COM |                       |
| ECN NO. 4403 | REVISED PER BY: HM | MODEL(S)  | PART NUMBER:          |
| DRAWN: HM    | DATE: 06/08/10     | HCR8 (115V)/HCR8.50 (220V)  | 0002075001.D          |
| APPROVED:    | DATE:              | REMOTE CHILLER  | DRAWING NO.: 15352A00 |
| SCALE: 5:1   |                    | DRAWING TYPE: INSTALLATION  | REV: 5                |
| SIZE: A      |                    | SHEET 3 OF 3  |                       |