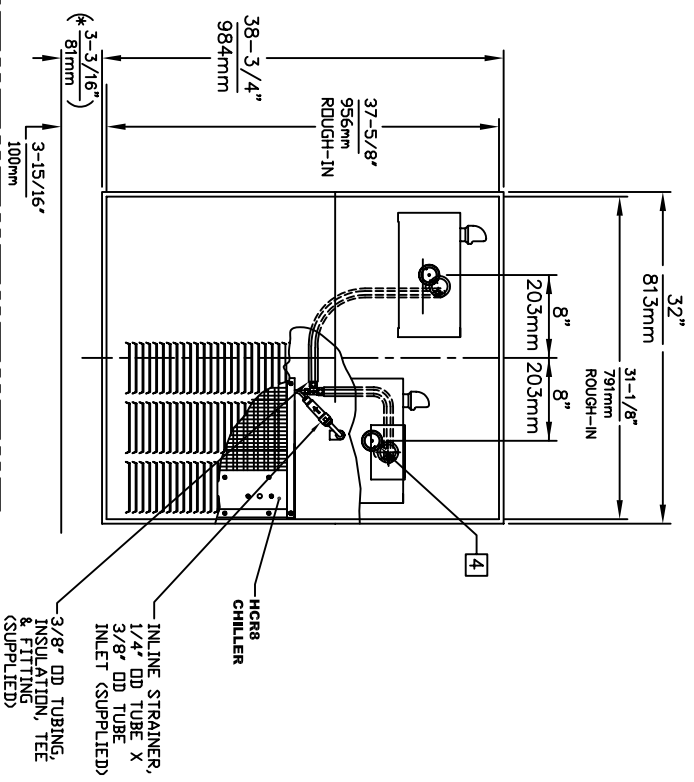
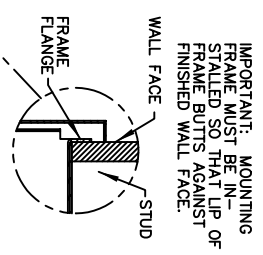
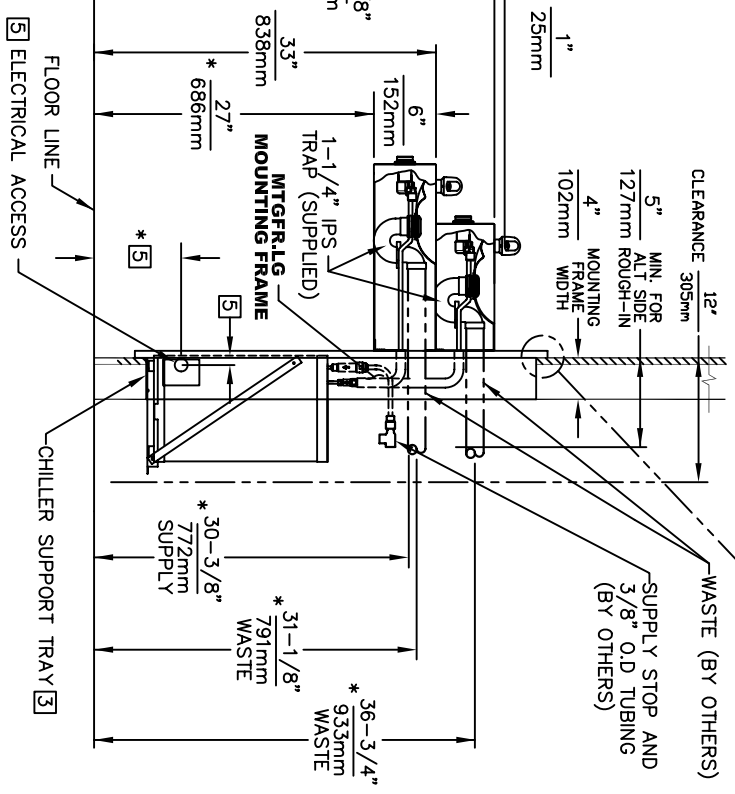


- NOTES:**
- HOLD ROUGH-IN DIMENSIONS  $\pm 1/8"$  (3.2mm)
  - WHEN INSTALLING THIS UNIT, LOCAL, STATE OR FEDERAL CODES SHOULD BE ADHERED TO. FOR INSTALLATION HEIGHTS OTHER THAN SHOWN, DIMENSIONS MARKED (\*) MUST BE ADJUSTED ACCORDINGLY.
  - ALIGN HOLES IN CHILLER SUPPORT TRAY WITH HOLES IN FRAME
  - REFER TO 5874SS/RRK5874 OPERATION AND MAINTENANCE MANUAL FOR PUSH BUTTON AND VALVE INSTALLATION/MAINTENANCE INSTRUCTIONS.
  - REFER TO MTGRFLG INSTALLATION DRAWING FOR ROUGH-IN DIMENSIONS.
  - INSERT 3/16"-18 PANEL INSERTS FROM OPPOSITE SIDE AT LOCATIONS SHOWN BY DARKENED HOLES. HOLE COMBINATIONS SHOWN ARE FOR USE WITH LOW FOUNTAIN ON THE RIGHT AND THE HI FOUNTAIN ON THE LEFT. USE OPPOSITE HOLES FOR HI ON RIGHT AND LOW ON LEFT.
  - HOLE COMBINATION SHOWN BELOW IS FOR USE WITH LOW FOUNTAIN ON THE RIGHT AND HIGH FOUNTAIN ON THE LEFT. USE OPPOSITE HOLES FOR HIGH ON RIGHT AND LOW ON LEFT.
  - TO CHANGE FOUNTAIN MFG. SCREW LOCATIONS, FIRST REMOVE SCREWS AND THEN SQUEEZE SLIPS OF NUT RETAINER TO POP OUT. SNAP INTO NEW POSITIONS AND RE-ASSEMBLE SCREWS.
  - IMPORTANT: A L.H. LOW (OPTIONAL) CONFIGURATION WILL REQUIRE A DIFFERENT BACK PANEL AND THE WASTE AND SUPPLY DIMENSIONS SHOWN (\*) MUST BE REVERSED.

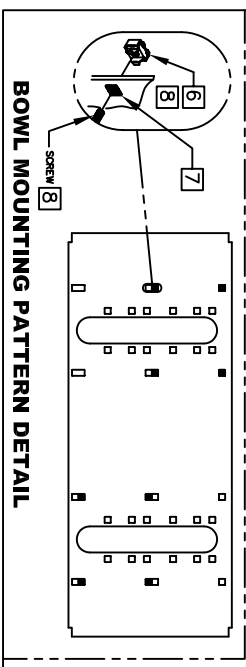


HCR8 CHILLER  
 IN-LINE STRAINER, 1/4" OD TUBE X 3/8" OD TUBE INLET (SUPPLIED)  
 3/8" OD TUBING, INSULATION, TEE & FITTING (SUPPLIED)



SUPPLY STOP AND 3/8" O.D. TUBING (BY OTHERS)

IMPORTANT: MOUNTING FRAME MUST BE INSTALLED SO THAT LIP OF FRAME BUTTS AGAINST FINISHED WALL FACE.



**BOWL MOUNTING PATTERN DETAIL**

**Haws Corporation**

1455 KLEPPE LANE  
 SPARKS, NEVADA 89431  
 (775) 359-4712 FAX (775) 359-7424  
 E-MAIL: HAWS@HAWSCCO.COM  
 WEBSITE: WWW.HAWSCCO.COM

ED. NO.	REVISIONS	NO.	MODEL(S)
DATE:	ENCL. 4384	REV.:	H1119, 8/H1119, 8A
APPROVED:	09/98	DATE:	INFO. FAX DOC #: 2411198
DESIGNER:	09/98	DATE:	INSTALLATION/PACKAGE
SIZE:	A	SCALE:	1" = 1"
NO.	0002080262.D	REV.	1/6
FILE NO.	13746A00		