

NOTES:

- 1 REFER TO 5874SS OPERATION AND MAINTENANCE MANUAL FOR PUSH BUTTON AND VALVE INSTALLATION/MAINTENANCE INSTRUCTIONS.
- 2 **PROCEDURE FOR ASSEMBLING ARM TO PEDESTAL:**
 STEP 1: ATTACH MOUNTING BRACKETS (QTY 2) ON THE INSIDE REAR CORNERS OF ARM USING 3/8"-16 X 1 BOLTS AND WASHERS (SUPPLIED). ENSURE THAT BOTH BRACKETS ARE FLUSH WITH BACKSIDE OF ARM (AS SHOWN IN DETAIL "A") AND TIGHTEN SECURELY IN PLACE.

NOTES CONTINUED ON SHEET 2 OF 2.

		1455 KLEPPE LANE SPARKS, NEVADA 89431 (775) 359-4712 FAX (775) 359-7424 E-MAIL: HAWS@HAWS.CO.COM WEBSITE: WWW.HAWS.CO.COM	
		ECN NO. REVISED PER BY: ECN: 4686 HM MODEL(S) 3150	PART NUMBER 0002077070.D
DRAWN: C.J.L. DATE: 09/92 CHKD.:	APPROVED: DATE:	DRAWING NO. 10324C00 REV 22	SIZE: A SHEET 1 OF 2
SCALE: 1:13 DRAWING TYPE: INSTALLATION		SHEET 1 OF 2	

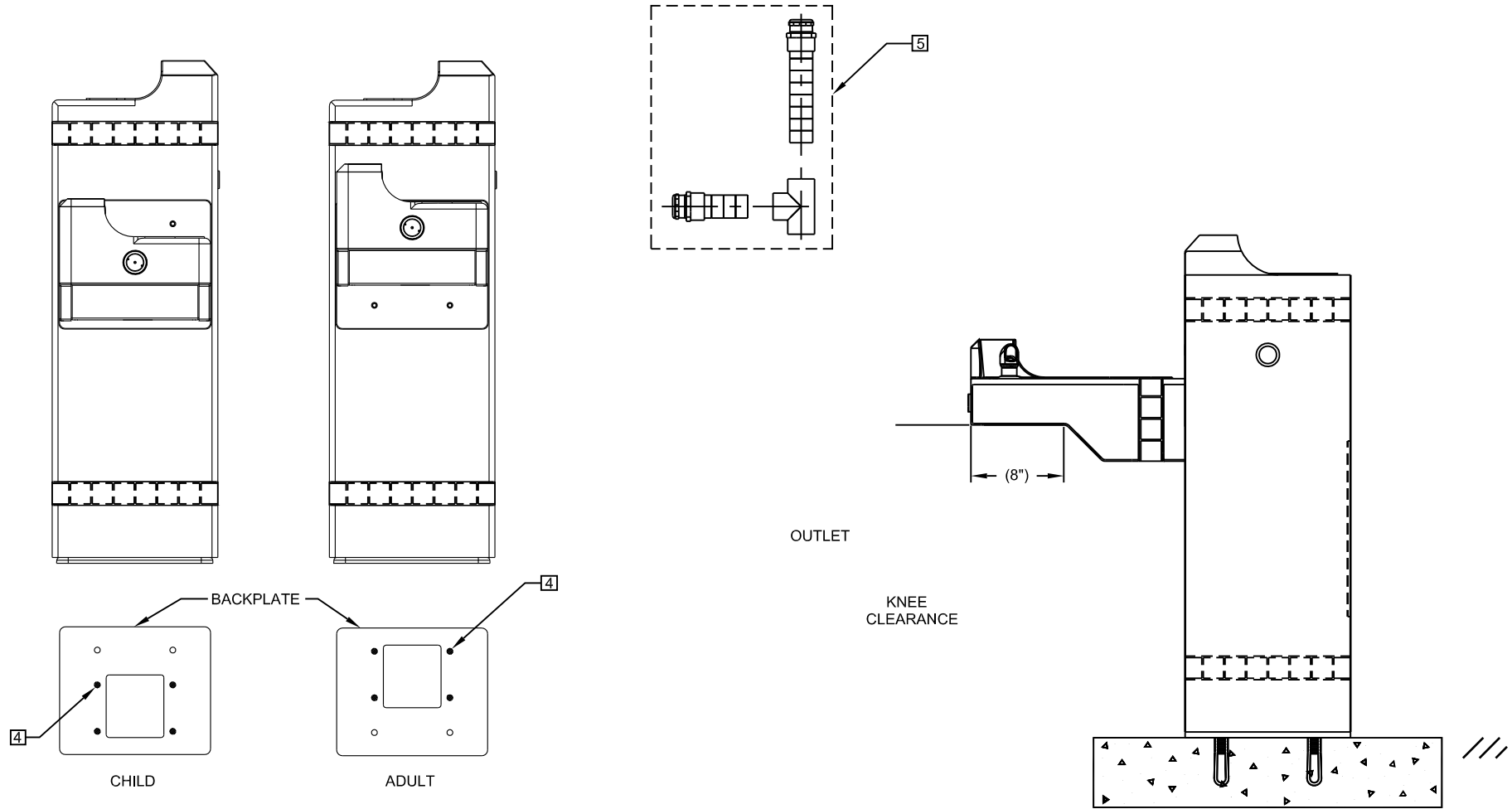


FIGURE 1

NOTES:

- HEIGHTS (SEE "AVAILABLE ARM HEIGHTS" CHART).
- ④ BASED ON DESIRED HEIGHT (CHILD OR ADULT) OF ARM, ORIENT BACKPLATE AS SHOWN IN FIGURE 1 AND USE APPROPRIATE SHADED HOLES.
- ⑤ WASTE ASSEMBLY IS SUPPLIED DISASSEMBLED. THE SHORTER OF THE TWO PIECES IS FOR THE ARM DRAIN, AND MUST BE INSTALLED SO THAT ANY BEND IN THE FLEX TUBING WILL ALLOW WATER TO DRAIN COMPLETELY. THE LONGER IS FOR THE PEDESTAL DRAIN AND IS SUPPLIED AT THE LENGTH REQUIRED TO ASSEMBLE THE UNIT WITH THE ARM AT CHILD HEIGHT. IN ORDER TO ASSEMBLE AT ADULT HEIGHT, 3" MUST BE CUT FROM THE END OF THE FLEX TUBING PRIOR TO ASSEMBLY. TEE IS TO BE GLUED TO THE FLEX TUBING WASTE ARMS USING PVC PIPE CEMENT.

AVAILABLE ARM HEIGHTS		
DIM	ADULT ADA	CHILD ADA
A	27" / 686mm	24" / 610mm
B	32-3/4" / 832mm	29-3/4" / 756mm

1455 KLEPPE LANE
SPARKS, NEVADA 89431
(775) 359-4712 FAX (755) 359-7424
E-MAIL: HAWS@HAWSCO.COM
WEBSITE: WWW.HAWSCO.COM

ECN NO:	REVISED PER:	BY:	MODEL(S)	PART NUMBER
	ECN: 4686	HM	3150	0002077070.D
DRAWN:	DATE:	CHKD.:		DRAWING NO.
CJL	09/92			10324C00
APPROVED:	DATE:			REV
				22
SCALE: 1:13			DRAWING TYPE: INSTALLATION	SIZE: A SHEET 2 OF 2