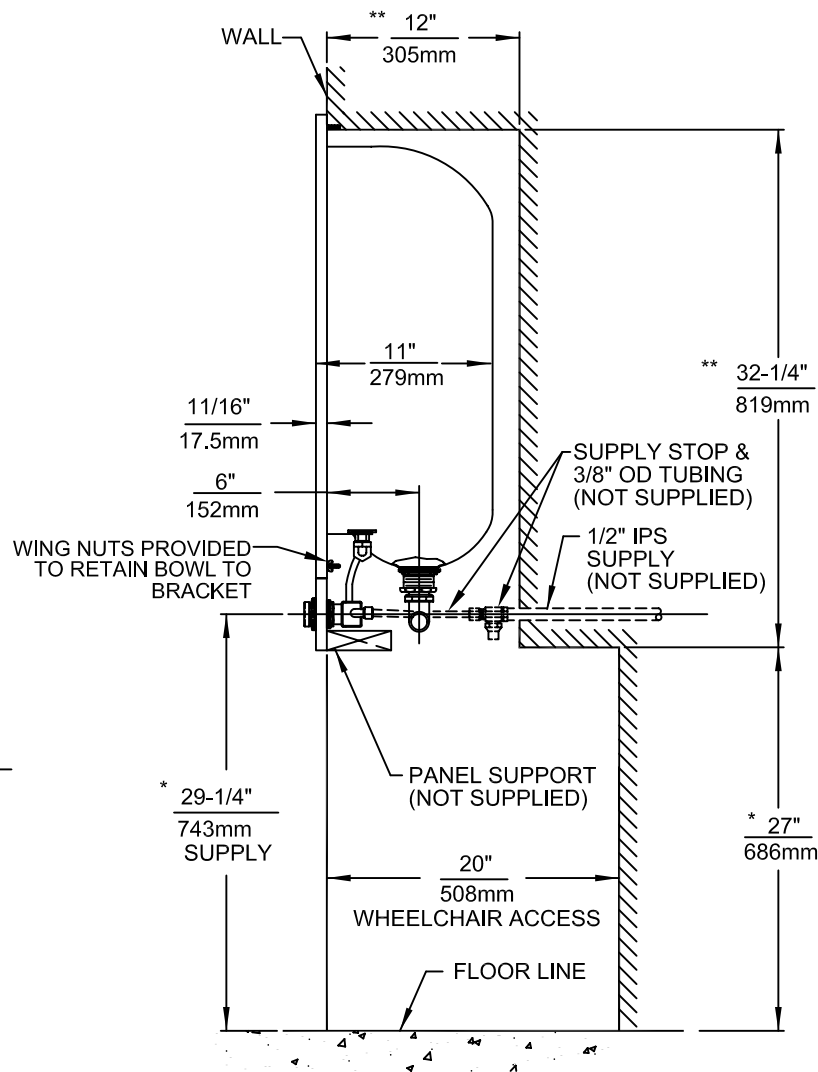
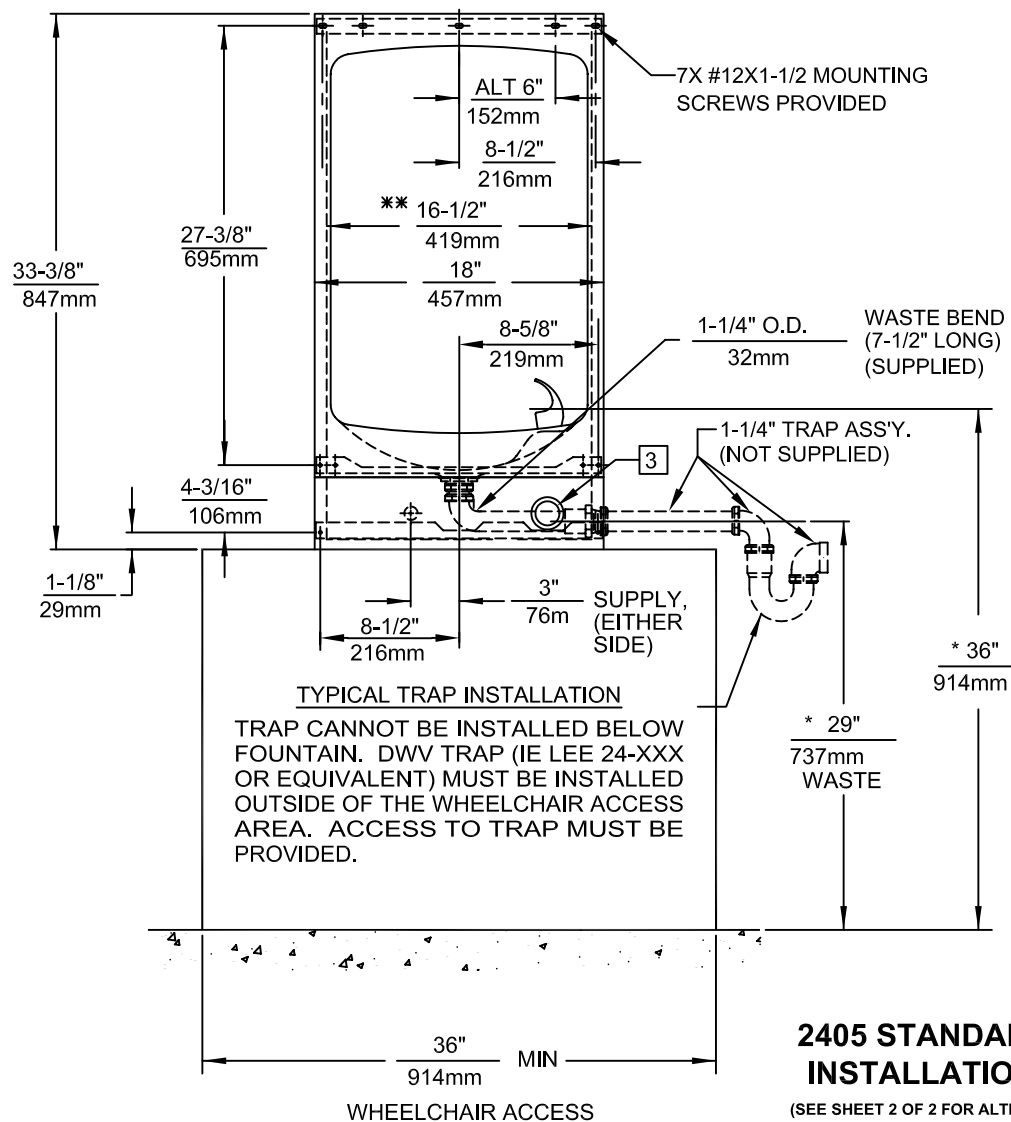


NOTES:

1. **HOLD ROUGH-IN DIMENSIONS PLUS OR MINUS 1/4" (6.4mm)
2. *THIS IS A DUAL PURPOSE WHEELCHAIR ACCESSIBLE DRINKING WATER FACILITY. WHEN INSTALLING THIS UNIT LOCAL, STATE OR FEDERAL CODES SHOULD BE ADHERED TO. FOR INSTALLATIONS OTHER THAN THAT SHOWN, DIMENSIONS MUST BE ADJUSTED ACCORDINGLY.
3. REFER TO 5874SS OPERATION AND MAINTENANCE MANUAL FOR PUSH BUTTON AND VALVE INSTALLATION/MAINTENANCE INSTRUCTIONS.



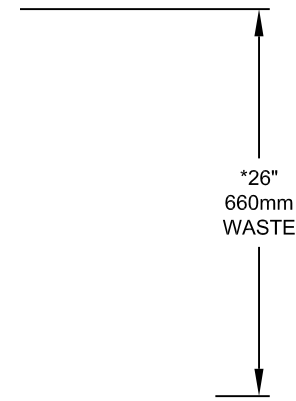
		1455 KLEPPE LANE SPARKS, NEVADA 89431 (775) 359-4712 FAX (775) 359-7424 E-MAIL: HAWS@HAWS.CO.COM WEBSITE: WWW.HAWS.CO.COM	
		ECN NO. REVISED PER BY: ECN: 4803 HW DRAWN: C.J.L. DATE: 10/91 APPROVED: DATE:	MODEL(S) 2405 DRINKING FOUNTAIN SCALE: 1/12 DRAWING TYPE: INSTALLATION

100

3"
76mm




1-1/4" O.D.



DRAWING NO. 09835C00

ALTERNATE INSTALLATION

		1455 KLEPPE LANE SPARKS, NEVADA 89431 (775) 359-4712 FAX (775) 359-7424 E-MAIL: HAWS@HAWSO.COM WEBSITE: WWW.HAWSO.COM		
		ECN NO. REVISED PER BY: ECN: 4803 HM	MODEL(S) 2405	PART NUMBER: 0002076937.D
DRAWN: HIM	DATE: 02/06/08	CHK'D: HM	DRAWING NO.: 09835C00	REV. 9
APPROVED:	DATE:	SCALE: 1/13 DRAWING TYPE: INSTALLATION		SIZE: A SHEET 2 OF 2