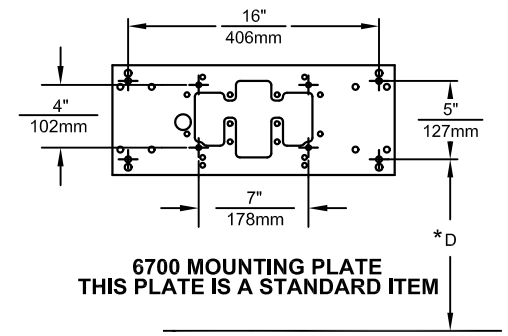
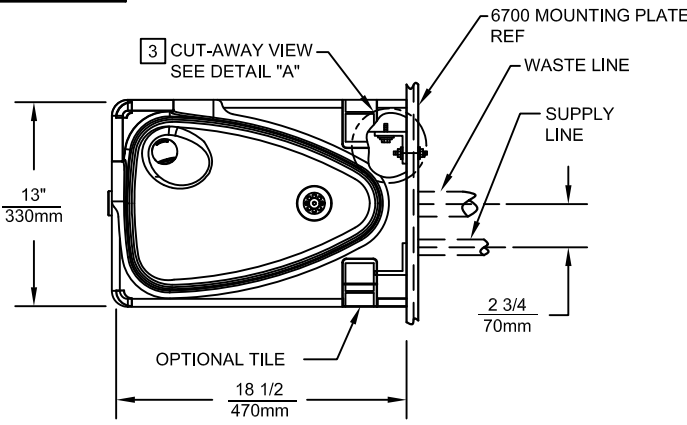
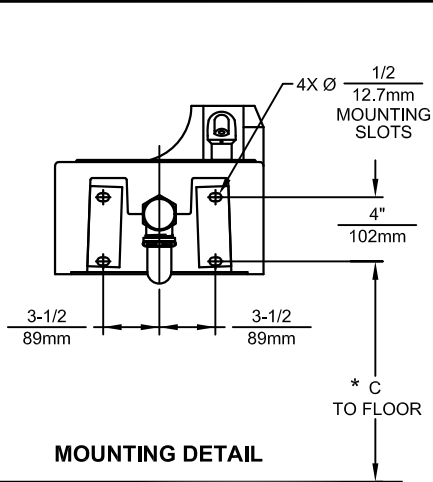
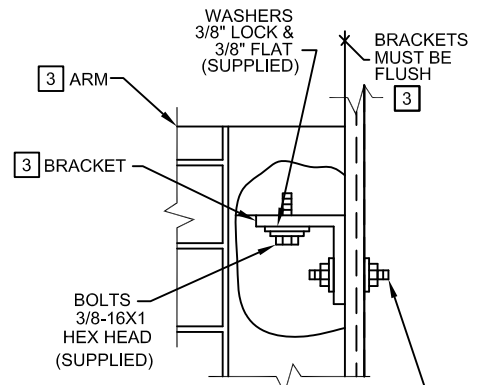
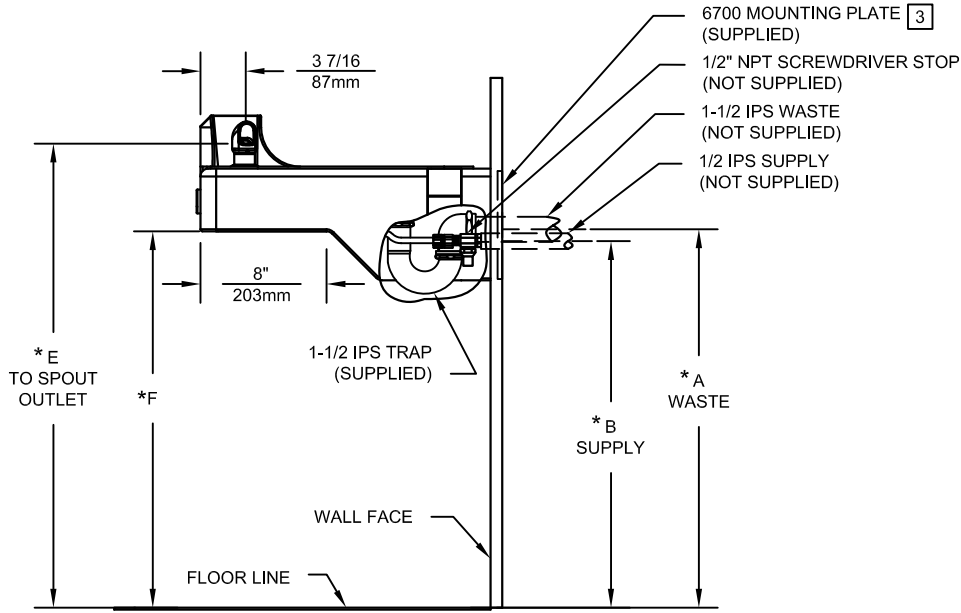
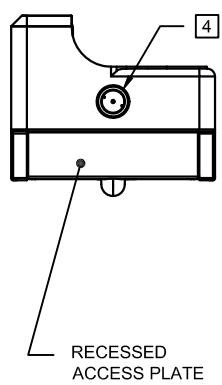


THIS DOCUMENT IS TRUE AND CORRECT AT TIME OF PUBLICATION. CONTINUED PRODUCT IMPROVEMENTS MAKE SPECIFICATIONS AND MEASUREMENTS SUBJECT TO CHANGE WITHOUT NOTICE.



MOUNTING DETAIL

**6700 MOUNTING PLATE
THIS PLATE IS A STANDARD ITEM**



DETAIL "A"

3/8" MOUNTING HARDWARE (SUPPLIED WITH 6700 MOUNTING PLATE) SEE NOTE [3] STEP 2.

DIM	ADULT ADA	CHILD ADA
A	27-1/2 / 699mm	24-1/2 / 622mm
B	26-3/8 / 670mm	23-3/8 / 594mm
C	25-1/8 / 638mm	22-1/8 / 562mm
D	24-3/8 / 619mm	21-3/8 / 543mm
E	32-3/4 / 832mm	29-3/4 / 756mm
F	27" / 686mm	24" / 610mm

NOTES:

- HOLD ROUGH-IN DIMENSIONS $\pm 1/4$ (6.4mm).
- WHEN INSTALLING THIS UNIT, LOCAL, STATE OR FEDERAL CODES SHOULD BE ADHERED TO. FOR INSTALLATION HEIGHTS OTHER THAN SHOWN, DIMENSIONS MARKED (*) MUST BE ADJUSTED ACCORDINGLY.

[3] PROCEDURE FOR ASSEMBLING ARM TO WALL:

- STEP 1:** ATTACH MOUNTING BRACKETS (QTY 2) ON THE INSIDE REAR CORNERS OF ARM USING 3/8-16 X 1" BOLTS AND WASHERS (SUPPLIED). ENSURE THAT BOTH BRACKETS ARE FLUSH WITH BACKSIDE OF ARM (AS SHOWN IN DETAIL "A") AND TIGHTEN SECURELY IN PLACE.
- STEP 2:** ATTACH ENTIRE ARM ASSEMBLY TO WALL USING 6700 MOUNTING PLATE (SUPPLIED) USING THE 3/8-16 X 4" THREADED RODS, WASHERS AND NUTS (SUPPLIED WITH 6700 MTG PLT) AND TIGHTEN SECURELY IN PLACE.

- [4]** REFER TO 5874SS OPERATION AND MAINTENANCE MANUAL FOR PUSH BUTTON AND VALVE INSTALLATION/MAINTENANCE INSTRUCTIONS.

1455 KLEPPE LANE
SPARKS, NEVADA 89431
(775) 359-4712 FAX (755) 359-7424
E-MAIL: HAWS@HAWSCO.COM
WEBSITE: WWW.HAWSCO.COM

ECN NO. 4144	REVISED PER BY: ECN: 4686 HM	MODEL(S)	PART NUMBER
DRAWN: SLS	DATE: 07/22/08	CHKD:	0002076418.D
APPROVED:	DATE:	1047	DRAWING NO. 10390C00
		WALL MOUNTED DRINKING FOUNTAIN	REV 18
		SCALE: 1:25	SIZE: A SHEET 1 OF 1